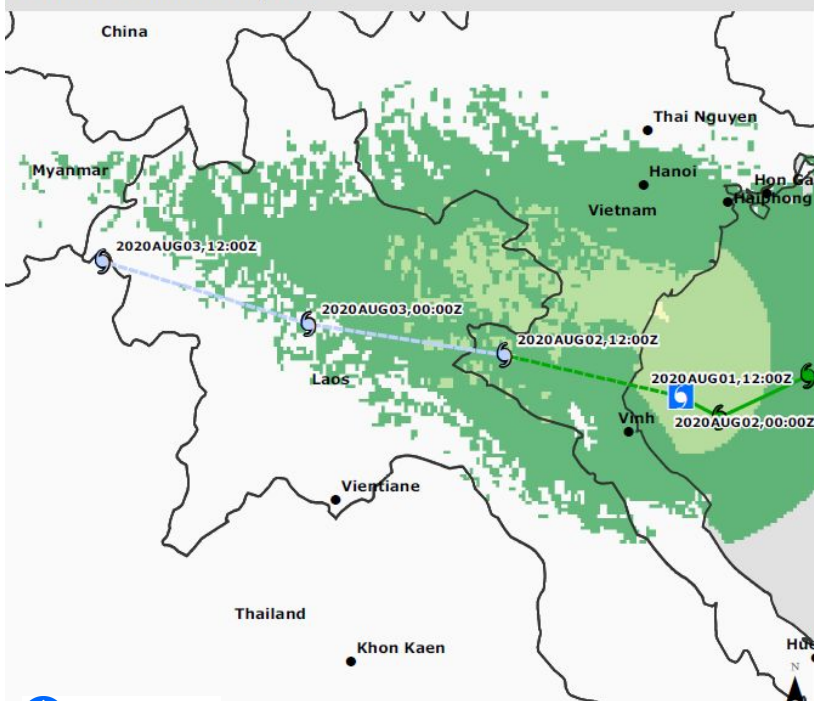


Estimated Wind Impacts

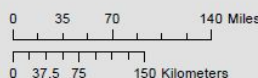


Tropical Cyclone Positions

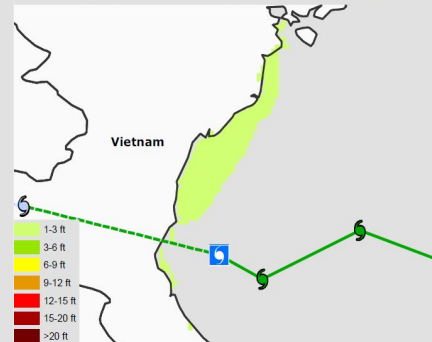
- Hurricane/Typhoon >150 mph
- Hurricane/Typhoon > 74 mph
- Tropical Storm: 39-73 mph
- Tropical Depression: <39 mph
- Current Cyclone Position

Est Wind Impacts (TAOS)

- Small Trees Sway
- Large Trees Sway
- Branches Breaking
- Trees Down; some power loss
- Minor Damage; power out
- Moderate Damage 5% of value
- Widespread Damage
- Severe Damage
- Catastrophic Damage



Estimated Still Water Storm Surge



Estimated Tropical Cyclone Rainfall



GLOBAL Pacific Disaster Center | 8/2/2020 | <http://www.pd.c.org> | response@pd.c.org | Data: NOAA, KinetiCast, ESRI. © 2015-2020 Pacific Disaster Center (PDC) – All rights reserved.

POTENTIAL IMPACTS



4.42 Million

ESTIMATED POPULATION EXPOSED



1.14 Million

ESTIMATED HOUSEHOLDS EXPOSED



\$27.7 Billion

ESTIMATED TOTAL REPLACEMENT VALUE OF BUILDINGS AND INFRASTRUCTURE

Viet Nam

- **Current update on Tropical Storm (TS) SINLAKU formerly INVEST 91W (as of 02 August):**
 - **LOCATION:** According to the Pacific Disaster Center's ([PDC Global](#)) Hazard Brief issued at 1000 hrs UTC+7, **TS SINLAKU** is currently located in the Gulf of Tonkin, 50 km from Viet Nam.
 - **STRENGTH:** Maximum sustained winds of 65 km/h, and gustiness of up to 83 km/h.
 - **MOVEMENT:** **TS SINLAKU** is moving at a West-Northwestward direction at about 13 km/h according to the Joint Typhoon Warning Centre ([JTWC](#)) and [PDC Global](#). The centre of **TS SINLAKU** is expected to make landfall at approximately 1400 hrs UTC+7 today 02 August, but the storm's actual position may shift significantly over the next few days.
 - **POTENTIAL IMPACTS:** It is forecast that an estimated 4.42M persons or 1.14M households, and \$27.7B* of capital is exposed to **LOW** severity level of damaging winds ([PDC Global](#)). *total replacement cost of buildings and infrastructure
 - **FORECAST:** In the next 12-24 hours, as **TS SINLAKU** moves inland, it is expected to weaken into a tropical depression and eventually dissolve according to Viet Nam's National Centre for Hydro-Meteorological Forecasting ([NCHMF](#)). Heavy rainfall warnings are issued over the Thanh Hoa and Quang Binh provinces (50 to over 150 mm of rain within 24 hours). The Central Steering Committee for Natural Disaster Prevention and Control of Viet Nam advises to monitor the situation for flash floods and landslides in the mountainous areas of the North and North Central regions and the situation of the river basins of Gianh River in Quang Binh.
 - The AHA Centre will continue to monitor the situation for potential developments and issue necessary updates.

DISCLAIMER

The AHA Centre was established in November 2011 by the Association of Southeast Asian Nations (ASEAN) Member States to facilitate cooperation and coordination among the Member States, relevant agencies of the United Nations, and international organisations in disaster management and humanitarian assistance. The use of boundaries, geographic names, related information and potential considerations for response are for reference, not warranted to be error free or implying official endorsement from ASEAN Member States.