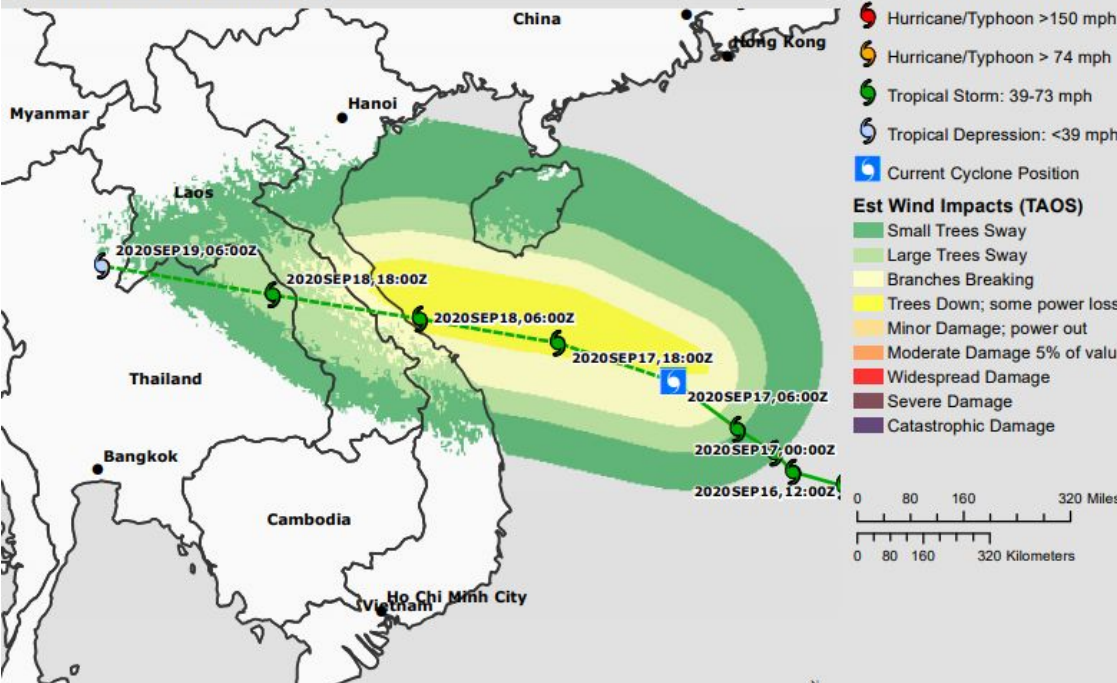
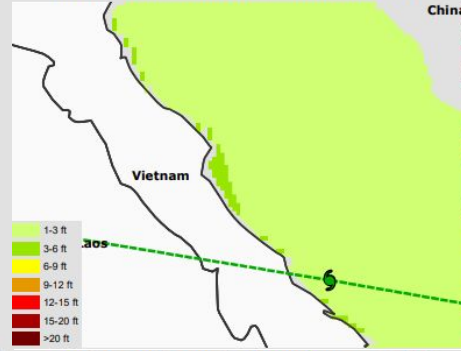


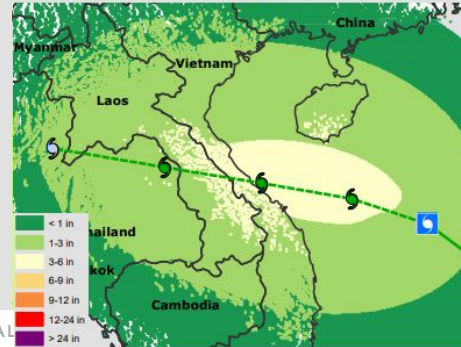
Estimated Wind Impacts



Estimated Still Water Storm Surge



Estimated Tropical Cyclone Rainfall



ESTIMATED EXPOSURE



436,458
ESTIMATED POPULATION
EXPOSED



113,364
ESTIMATED
HOUSEHOLDS
EXPOSED



\$624 Million
ESTIMATED TOTAL
REPLACEMENT VALUE OF
BUILDINGS AND
INFRASTRUCTURE

Viet Nam

- **Location:** As of September 17, 2020, 09:00:00 GMT, according to the Joint Typhoon Warning Center ([JTWC](#)) **Tropical Storm - NOUL**, is located in the West Philippine Sea.
- **Strength:** Maximum sustained winds of 83 km/h, and wind gusts up to 102 km/h.
- **Movement:** Northwest at about 31 km/h, and is expected to strengthen over the next 24 hours. It is cautioned, however, that the storm's actual position may shift significantly in the coming days.
- **Outlook:** Based on the current forecast (the storm's center and path), **TS NOUL** is within 643 km from Viet Nam, and the center is expected to make landfall within the next 22 hours, along the shores of/near Thừa Thiên Huế or Quảng Trị, with sustained winds of about 93 km/h.
- **Estimated Impacts:** As of reporting, winds strong enough to bring trees down and cause some power loss is expected as can be seen in the Estimate Wind Impacts map from the Pacific Disaster Center's ([PDC Global](#)). Based on the Estimated Tropical Cyclone Rainfall map, at most 152.4 mm of 5-day cumulative rainfall is predicted in **TS NOUL's** track. For the extended forecast, models do not show a concentrated population exposed to moderate or severe damaging winds (within the extended forecast area) at this time. All shorelines in the path of the storm are exposed to potential storm surge (0.91-1.83 m), and inland areas within the proximity of the storm are exposed to potential flooding.
- The AHA Centre will continue to monitor for further developments and provide additional updates as they become available by official sources.

DATA SOURCES

ASEAN Disaster Monitoring & Response System (DMRS); Pacific Disaster Center (PDC Global); Joint Typhoon Warning Center (JTWC)

Verified news media agencies

DISCLAIMER

The AHA Centre was established in November 2011 by the Association of Southeast Asian Nations (ASEAN) Member States to facilitate cooperation and coordination among the Member States, relevant agencies of the United Nations, and international organisations in disaster management and humanitarian assistance.

The use of boundaries, geographic names, related information and potential considerations for response are for reference, not warranted to be error free or implying official endorsement from ASEAN Member States.

© 2020 AHA Centre.
All rights reserved.
You are receiving this email
because you are registered in
our distribution list.

Our mailing address is:
AHA Centre,
GRAHA BNPB 13th Floor,
Jl. Raya Pramuka Kav. 38,
Jakarta 13120 Indonesia