

FRIDAY,  
15 DEC 2017,  
11:00 UTC+7

# TROPICAL STORM KAI-TAK (URDUJA) PHILIPPINES FLASH UPDATE #1

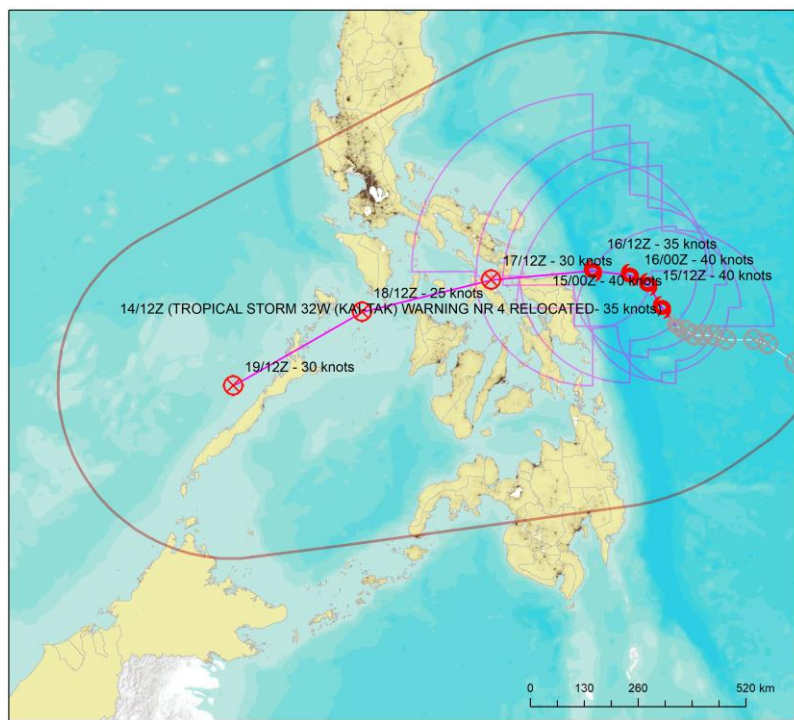
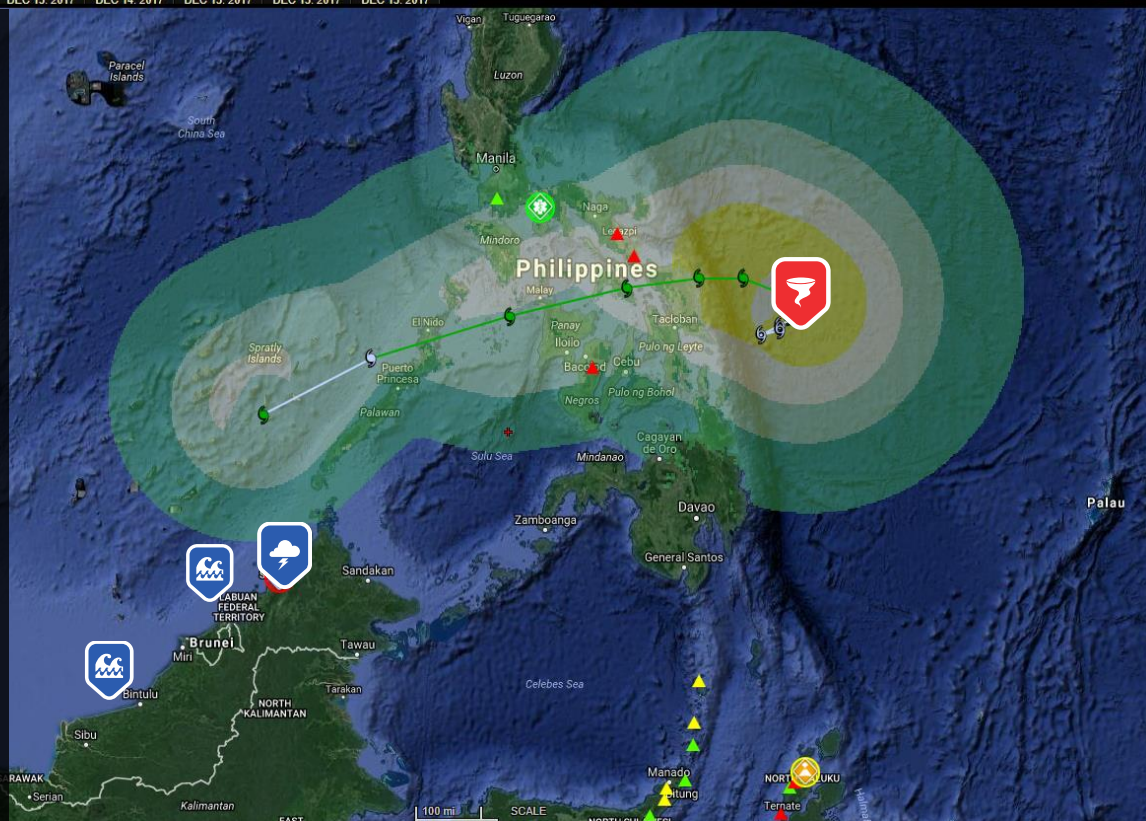


ONE ASEAN ONE RESPONSE

ONE ASEAN ONE RESPONSE DMRS v5.3.3 Powered by DisasterAware	UTC 04:03 DEC 15 2017	LONDON 04:03 DEC 15 2017	NYC 23:03 DEC 14 2017	SINGAPORE 12:03 DEC 15 2017	TOKYO 13:03 DEC 15 2017	SYDNEY 15:03 DEC 15 2017
---	-----------------------------	--------------------------------	-----------------------------	-----------------------------------	-------------------------------	--------------------------------

## TROPICAL STORM WARNING

- Landfall is expected on Northern to Eastern Samar, Philippines between morning and afternoon of 16 December.
- Forecasts indicate maximum sustained winds of 83 km/h near the center and gustiness of up to 102 km/h
- Heavy rain, winds and storm surges are expected in the vicinity of Sabah & Sarawak, Malaysia and Brunei Darussalam



- Storm surges are expected at costal areas of between 4 and 14 metres.
- Fishing activities are advised to cease.
- Light to moderate risk of structural collapse for high-risk structures with potential peeling/blowing off old galvanized roofs.
- Residents were advised to seek shelter in better built structures with little to insignificant risk of damage.
- Impacts to urban and densely populated areas will be higher, residents staying in landslide prone areas are advised to evacuate if necessary.
- NDRRMC and PAGASA warns of floods and landslides and DILG CODIX has raised alerts in:
  - 20 areas under the Charlie alert;
  - 8 areas under Bravo alert;
  - 6 areas under Alpha alert

- Heavy rainfall was observed in North-western end of Sabah, parts of Central Sarawak and Brunei over the past 2 days.
- Heavy rain/storms are expected to continue over the next few days, potentially resulting in floods and landslides/mudslides.
- Storm surges are expected off Sarawak, Sabah and Labuan FT according to MET Malaysia.



**DATA SOURCE**  
AHA Centre Disaster Monitoring & Response System (DMRS); Pacific Disaster Center (PDC Global); Philippines Atmospheric Geophysical and Astronomical Services Administration (PAGASA); National Disaster Risk Reduction and Management Council (NDRRMC); MET Malaysia and Agensi Pengurusan Bencana Negara (NADMA)

**DISCLAIMER**  
The AHA Centre was established in November 2011 by the Association of South East Asian National (ASEAN) and ASEAN member states to facilitate cooperation and coordination among the Parties, relevant agencies of the United Nations and international organisations in disaster

management and humanitarian assistance. The use of boundaries, geographic names, related information and potential considerations for response are for reference, not warranted to be error free or implying official endorsement from ASEAN Member States.

© 2017 AHA Centre. All rights reserved. You are receiving this email because you are registered in our distribution list.

Our mailing address is: AHA Centre, GRAHA BNPB 13<sup>th</sup> Floor, Jl. Raya Pramuka Kav. 38, Jakarta 13120 Indonesia