

SUNDAY,
16 DEC 2017,
02.30 UTC+7

EARTHQUAKE & TSUNAMI WARNING IN SOUTH OF JAVA FLASH UPDATE #1



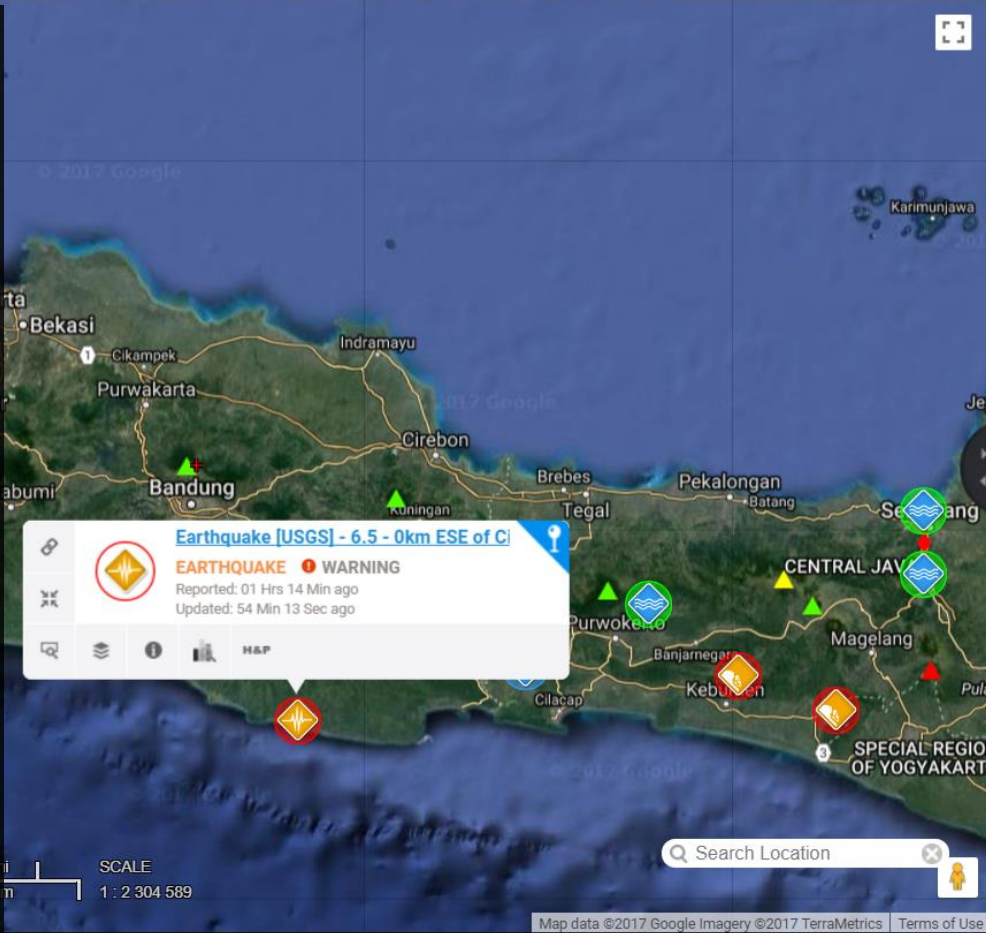
ONE ASEAN ONE RESPONSE

DMRS v5.3.3
Powered by DisasterAWARE

EVENT	YANGON	BANGKOK	SINGAPORE	TOKYO	SYDNEY
18:02 DEC 15, 2017	18:02 DEC 15, 2017	01:02 DEC 16, 2017	02:02 DEC 16, 2017	03:02 DEC 16, 2017	05:02 DEC 16, 2017

SUMMARY

- ✓ AHA Centre Disaster Monitoring & Response System (DMRS) triggered **"WARNING"** alert for a Magnitude 6.9 Earthquake on 15-Dec-17 23:47:57 (UTC+7) w/ epicenter located 7.75 South, 108.01 East, at a depth of 105 Km (BMKG).
- ✓ Indonesian BMKG is activating tsunami warning for southern part of West Java, Central Java and Yogyakarta. Currently estimated at around 0.5 – 3 meters. Public are advise to follow tsunami warning update from BMKG.
- ✓ Indonesian BNPB & local government BPBDs reported damages in municipalities, southern part of Java.
- ✓ AHA Centre will release additional updates once new information become available.



Earthquake affected municipalities (west to east)	BMKG Status of Tsunami warning as of 02.00 (UTC+7)	Total Population (2015)	Reported damages and impacts (BNPB statements & News agencies recorded at 02.00 UTC +7)
Sukabumi regency	ADVISORY	2,434,200	
Cianjur regency	ADVISORY	2,243,900	
Garut regency	ADVISORY	2,548,700	Houses & buildings damaged
Ciamis regency	ALERT	1,168,700	Houses & buildings damaged and 1 casualty
Banjar city	ADVISORY	181,400	
Pangandaran regency	ALERT	390,500	Houses damaged
Tasikmalaya regency	ADVISORY	1,736,000	Houses damaged
Cilacap regency	ADVISORY	792,480	Buildings damaged
Kebumen regency	ADVISORY	923,710	5 people injured due to collapsed house
Bantul regency	ADVISORY	971,511	
Banyumas regency	- inland -	1,243,320	6 houses heavily damaged. 50 Patients at a hospital in Banyumas have been evacuated



Above: Damage observed in Banyumas
Below: Damage observed in Tasikmalaya



- Public are advised to avoid coastal areas, follow evacuation order from BNPB and BPBDs and be prepared with additional aftershocks.
- BMKG has cancelled tsunami warning at 02.30 (UTC+7).



DATA SOURCE
AHA Centre Disaster Monitoring & Response System (DMRS); Pacific Disaster Center (PDC Global); National Disaster Management Authority (BNPB); Agency for Meteorology Climatology and Geophysics (BMKG); Indonesian Statistical Agency (BPS); US Geological Services (USGS); News agencies

DISCLAIMER
The AHA Centre was established in November 2011 by the Association of South East Asian National (ASEAN) and ASEAN member states to facilitate cooperation and coordination among the Parties, relevant agencies of the United Nations and international organisations in disaster

management and humanitarian assistance. The use of boundaries, geographic names, related information and potential considerations for response are for reference, not warranted to be error free or implying official endorsement from ASEAN Member States.

© 2017 AHA Centre. All rights reserved. You are receiving this email because you are registered in our distribution list.

Our mailing address is: AHA Centre, GRAHA BNPB 13th Floor, Jl. Raya Pramuka Kav. 38, Jakarta 13120 Indonesia