








Lao PDR, Impact of Tropical Storm Son-Tinh

Source: NDMO, Min. of Labor & Social Welfare (24-Jul-2018)

Government of Lao PDR reported flooding in 349 villages, 41 districts in the following provinces: Attapeu, Savannakhet, Khammouan, Xayabuly, Bolikhamsay, Luang Prabang, Bokeo, Sekong, Xiengkhouang, Oudomxay (red areas in left figure).

-  2 death
-  34 missing
-  10,015 persons directly affected (3,452 families)
-  324 families (1,494 people) evacuated to temporary emergency shelter
-  243 houses damaged
 - 20 totally damaged
 - 223 partially damaged
-  Damage to livelihood
 - Paddy field inundated
-  Affected of infrastructures and lifelines
 - 14 bridges damage
 - Road damage; in Attapeu Province only boat can access the affected areas
 - Access to natural water resources was cut-off
 - School buildings in affected areas are dysfunctional and used for evacuation centers

- #### Immediate Needs
- Additional tent for 1,000 families in temporary emergency shelter area
 - Family kits for 1,000 families
 - Personal hygiene kit for 4,000 people
 - Housing repair kits
 - Field Office with Operation system and support equipment

Situation Overview in Lao PDR

- Due to the monsoon season and heavy rainfall resulting from TS Son-Tinh passing over Northern, Central and Southern Laos PDR between 18-19 July 2018.
- Flooding occurred in 10 provinces: Attapeu, Savannakhet, Khammouan, Xayabuly, Bolikhamsay, Luang Prabang, Bokeo, Sekong, Xiengkhouang, Oudomxay.
- Due to the heavy rainfall, there was an overflow from Xepien-Xenamnoyu dam which resulted in flooding affecting downstream villages and more than 1,000 families were evacuated.

Response by Government of Lao PDR

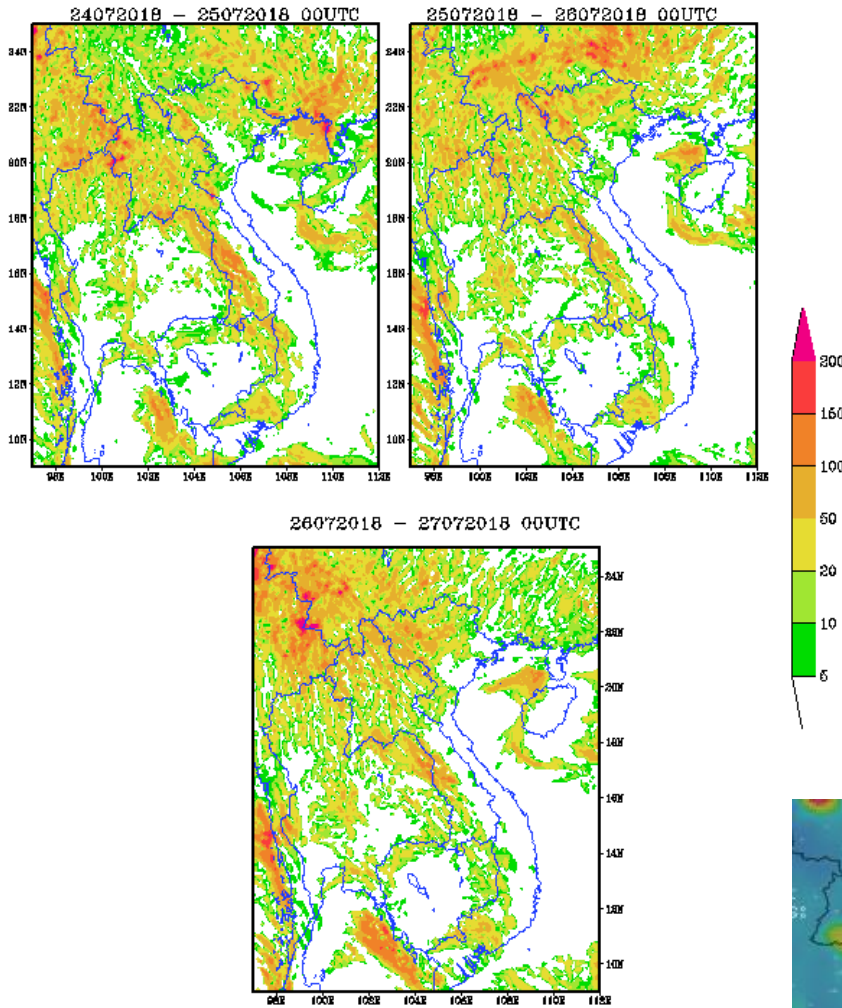
- Provincial Committee on Disaster Prevention and Control Committee was activated with military and police assisting evacuation of villagers. Search and Rescue teams was deployed with helicopters and rescue boats.
- Prime Minister Office has declared Sanamxay District, Attapeu Province (approx. 829 km from Vientiane), as a disaster area.
- Prime Minister and Chair of Disaster Prevention and Control Committee with members visited Attapeu Province with relief items on 24 July 2018.
- The National Focal Point meeting had taken place on 24 July 2018.

Other sources

- Status of the river monitoring system is also available on [Mekong River Commission's portal](#).
- Hydrological stations which are being monitored real time can be accessed [here](#)

AHA Centre is in close contact with Department of Social Welfare and will provide additional updates when new information becomes available.

24 Hour Accumulated Rainfall (mm) Forecast Valid from



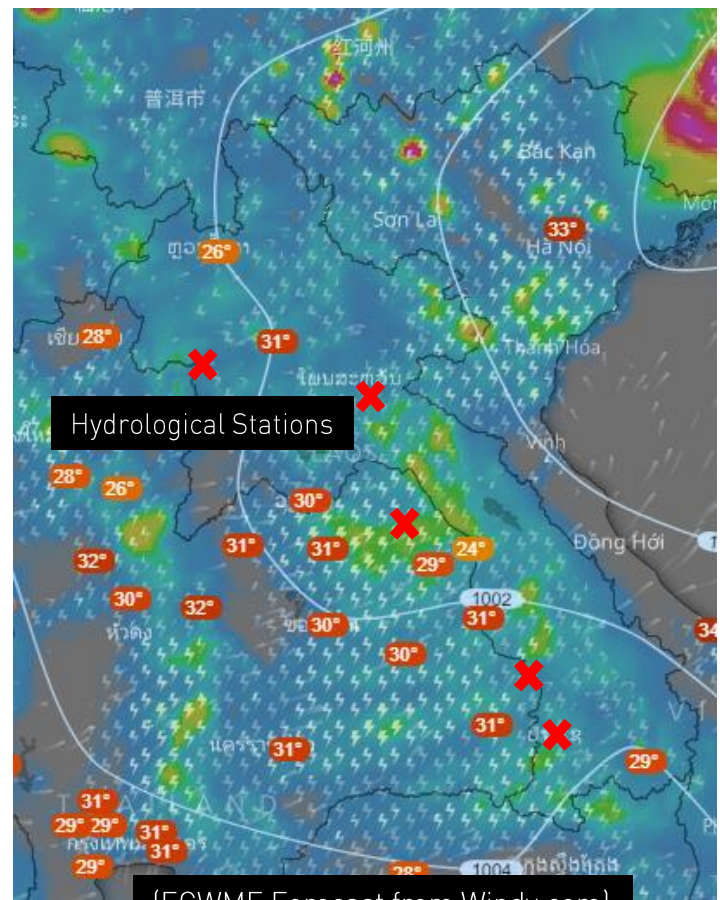
Forecast generated by NEWC of DMH LAOPDR



Current situation in affected areas
(Source: NDMO, Min. Labor & Social Welfare)

Forecast for the next 24 hours

- Based on the forecast by Lao PDR DMH, it is expected that there will be rain over the next 3 days across Northwestern Lao PDR bordering with Eastern Part of Thailand.
- This might increase the water levels of the Mekong river basin and likely exacerbate the situation as the floods start to subside.
- Mekong River Commission has a [near-real time monitoring portal](#) for hydrological levels along the basin
- Monitoring points to notes are: [Chiang Sean](#), [Phiengluang](#), [Mukdahan](#), [Pakse](#), [Khong Chiam](#)



(ECWMF Forecast from Windy.com)