



ONE ASEAN
ONE RESPONSE

WEEKLY DISASTER UPDATE

Week 28
08 – 14 Jul 2019

- ahacentre.org
- ahacentre
- @ahacentre
- @ahacentre

The AHA Centre, GRAHA BNPB 13th floor,
Jl. Raya Pramuka Kav. 38, East Jakarta 13120 Indonesia

SOURCES

ASEAN Disaster Monitoring & Response System (DMRS); ASEAN Specialised Meteorological Centre (ASMC); Pacific Disaster Center (PDC Global); United Nations Office for the Coordination of Humanitarian Affairs (OCHA)

Indonesia: BNPB, BMKG, MOH; Philippines: PHIVOLCS; Thailand: DDPM.

Various news agencies

DISCLAIMER

The AHA Centre was established in November 2011 by the Association of Southeast Asian Nations (ASEAN) Member States to facilitate cooperation and coordination among Member States, relevant agencies of the United Nations and international organisations in disaster management and emergency response.

This update consists of significant natural disaster events that occurred in ASEAN Member States – Brunei Darussalam, Cambodia, Indonesia, Lao PDR, Malaysia, Myanmar, Philippines, Singapore, Thailand, and Viet Nam. The disasters recorded include Drought, Flood, Earthquake, Tsunami, Volcano, Wind, Landslide, and Storm.

The use of boundaries, geographic names, related information, and potential considerations for response are for references, not warranted to be error-free or implying official endorsement from ASEAN Member States.

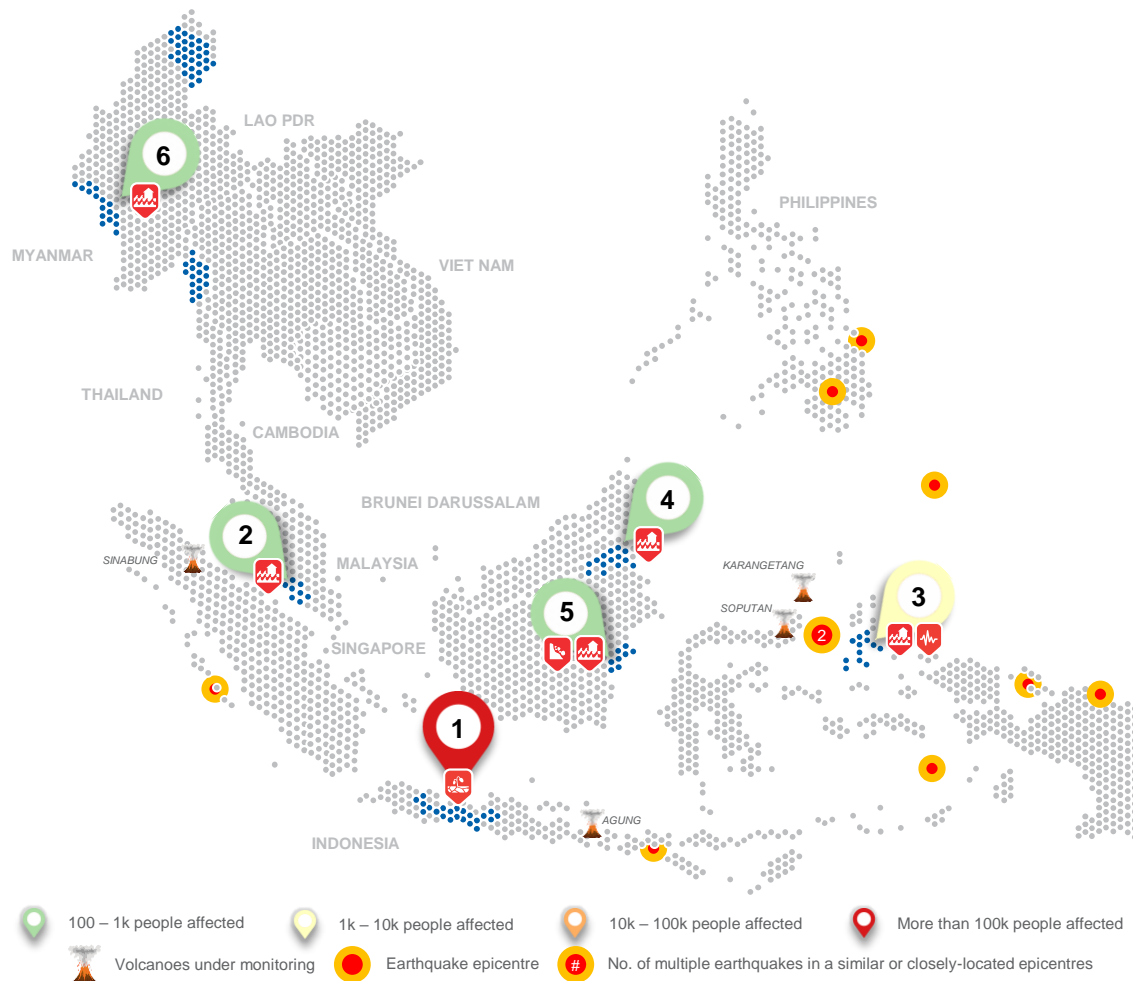
© 2019 AHA Centre.
All rights reserved.

For inquiries, comments, and/or suggestions,
you may reach us through data@ahacentre.org



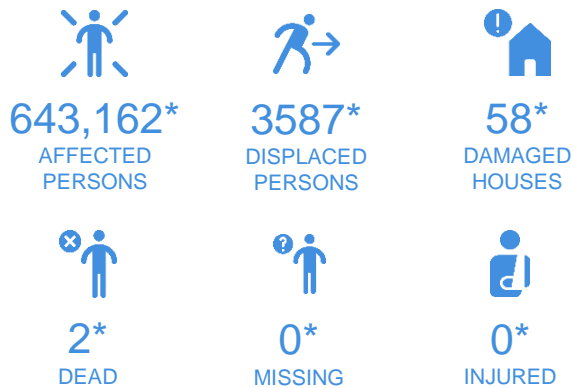
You are receiving this email because you are registered in our distribution list.

SCAN TO SUBSCRIBE



- 100 – 1k people affected
- 1k – 10k people affected
- 10k – 100k people affected
- More than 100k people affected
- Volcanoes under monitoring
- Earthquake epicentre
- No. of multiple earthquakes in a similar or closely-located epicentres

REGIONAL TALLY



* Estimations are based on data reported/confirmed by National Disaster Management Organisations of each respective ASEAN Member State and other verified sources

01 Indonesia (updated):

Drought in Java
23 Jun 2019 | More details at:
<http://adinet.ahacentre.org/reports/view/1440>

02 Malaysia:

Flooding in Malacca
08 Jul 2019 | More details at:
<http://adinet.ahacentre.org/reports/view/1446>

03a Indonesia:

Flooding in Halmahera
09 Jul 2019 | More details at:
<http://adinet.ahacentre.org/reports/view/1451>

03b Indonesia:

Earthquake in North Maluku
14 Jul 2019 | More details at:
<http://adinet.ahacentre.org/reports/view/1453>

04 Indonesia:

Flooding in Nunukan Regency
13 Jul 2019 | More details at:
<http://adinet.ahacentre.org/reports/view/1448>

05 Indonesia:

Flooding and Landslide in Balikpapan
13 Jul 2019 | More details at:
<http://adinet.ahacentre.org/reports/view/1452>

06 Myanmar:

Flooding in Kachin, Rakhine, and Mon States
14 Jul 2019 | More details at:
<http://adinet.ahacentre.org/reports/view/1450>

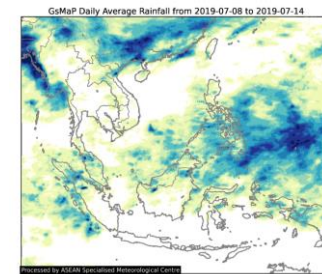
REGIONAL SUMMARY:

During the week, Southwest Monsoon has brought scattered showers over some areas in the northern and the equatorial ASEAN region, while drought persist in the southern part of ASEAN region. However, geophysical activities intensified during the week, and have caused moderate damages in Indonesia and minor damages in the Philippines. As the disaster is still within the national capacity, AHA Centre will support by rapid monitoring and arranging standby procedure as a form of preparedness.

HIGHLIGHT:

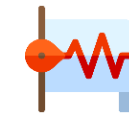
Indonesia's Meteorological, Climatological, and Geophysical Agency (BMKG) reported a strong magnitude 7.2 earthquake struck North Maluku Province on Sunday, 14 July 2019, at 16:10 (UTC+7). The earthquake is reported to have a shallow epicentre at 10-km depth, which is located about 62-km north east of Labuha town (0.59°S,128.06°E). There have been 2,703 people displaced in fourteen (14) evacuation centres, and four (4) people were reported dead. BNPB have sent rapid response teams to the ground zero to support the local DMO (BPBD) for examining the post disaster assessment. The Mayor of South Halmahera Regency has declared an emergency response status for seven (7) days (15 to 21 July 2019), and currently the disaster is still within national capacity.

HYDRO-METEO-CLIMATOLOGICAL:



The average rainfall estimation during the week by ASMC have shown that isolated heavy rains occurred in western and northern part of Myanmar, northern Viet Nam, Peninsular Malaysia, Northern Part of Sumatra, and the Philippines. Meanwhile, drought in Java (Indonesia) is continue and becoming more intense. As the Southwest Monsoon continue, these hydro-met profiles however expected to occur.

GEOPHYSICAL:



There have been eighteen (18) earthquakes magnitudes 5.0 and above were recorded in Indonesia (BMKG) and the Philippines (PHIVOLCS); Nine (9) of them occurred in the nearby areas of Southern Halmahera, North Maluku Province which have caused serious damages.

OUTLOOK:



ASMC forecasts that the wind will blow mainly from southwest in the northern ASEAN region, while in the southern ASEAN region, the wind will blow from southeast. A large scale weather system is expected to bring increased rainfall and strong winds over the Philippines in the next few days, and showers are forecast in the Mekong sub-region, over Peninsular Malaysia and northern Sumatra. Elsewhere, the prevailing dry weather is expected to persist.