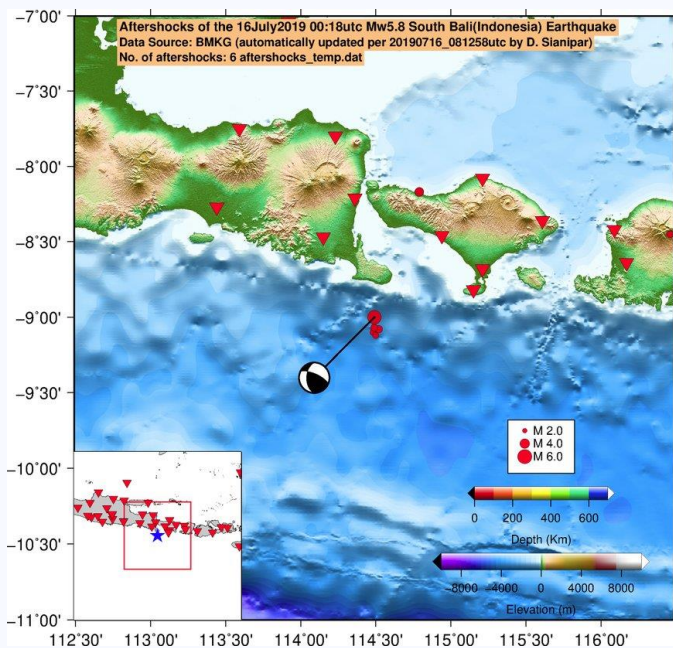
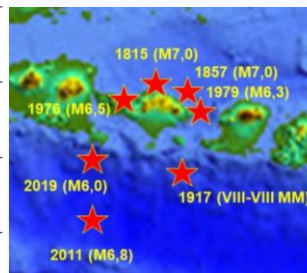


## EARTHQUAKE MAP



Source: D. Sianipar - BMKG



Historical earthquakes of Bali  
Source: Daryono - BMKG

## EFFECTS



\* Estimations are based on data reported/confirmed by National Disaster Management Organisations of each respective ASEAN Member State and other verified sources

## REPORTED INTENSITIES

Intensity V – Badung, Nusa Dua

Intensity IV – Denpasar, Mataram, Central & West Lombok

Intensity III – Banyuwangi, Karangetas, Sumbawa, East & North Lombok

Intensity II – Jember, Lumajang

## Indonesia

- A magnitude 5.8 earthquake struck Bali on Tuesday, 16 July 2019 at 07:18 (UTC+7). According to [BMKG](#), the epicentre has a depth of 68 km, and was located on 114.54 °E and 9.11°S, 83 km southwest of Nusa Dua. Besides Nusa Dua, tremors were also felt in several others areas, including Denpasar, Lombok and Jember. [BMKG](#) also revealed that the earthquake has a oblique-thrust fault mechanism due to the subduction of Indo-Australian oceanic plate to Eurasian Plate.
- Historically, Bali at least had experience of six (6) strong earthquakes since 1815-2011 with magnitudes ranging 6.3 to 7.0. One of the earthquakes, which occurred on 1917, brought thousands of casualties after several areas experienced intensity levels VII-VIII.
- The local disaster management organisation (BPBD) of Bali, reported that the number of damaged buildings including houses, schools, temples, and other public facilities did not increase since the last assessment conducted on 18 July 2019.
- Since the disaster is still managed within the local capacity, [BNPB](#) is rapidly monitoring the situation. [BNPB](#) is also encouraging the locals to keep calm and avoid sharing hoaxes.
- The estimated cost of damages could reach up to USD 52,264.
- AHA Centre is continuously monitoring the situation, and will issue updates should there be any significant development.

### DATA SOURCES

AHA Centre Disaster Monitoring & Response System (DMRS);  
ASEAN Disaster Information Network;  
Pacific Disaster Center (PDC Global);  
Indonesia: Badan Nasional Penanggulangan Bencana (BNPB), &  
Badan Meteorologi, Klimatologi, dan Geofisika (BMKG)  
Various news sources

### DISCLAIMER

The AHA Centre was established in November 2011 by the Association of South East Asian National (ASEAN) and ASEAN member states to facilitate cooperation and coordination among the Parties, relevant agencies of the United Nations and international organisations in disaster

management and humanitarian assistance.

The use of boundaries, geographic names, related information and potential considerations for response are for reference, not warranted to be error free or implying official endorsement from ASEAN Member States.

© 2019 AHA Centre.  
All rights reserved.  
You are receiving this email because you are registered in our distribution list.

Our mailing address is:  
AHA Centre,  
GRAHA BNPB 13<sup>th</sup> Floor,  
Jl. Raya Pramuka Kav. 38,  
Jakarta 13120 Indonesia