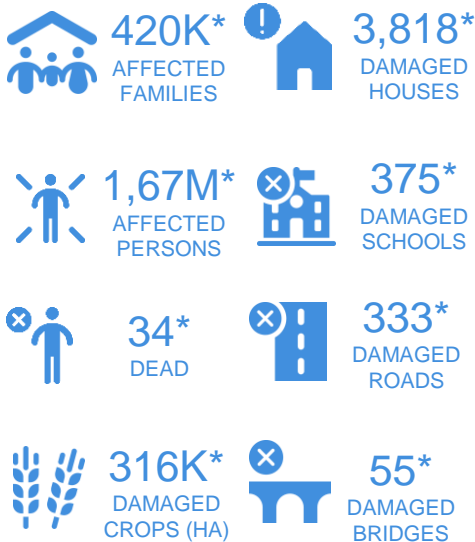


EFFECTS



* Estimations are based on data reported/confirmed by National Disaster Management Organisations of each respective ASEAN Member State and other verified sources

CAPITAL EXPOSED

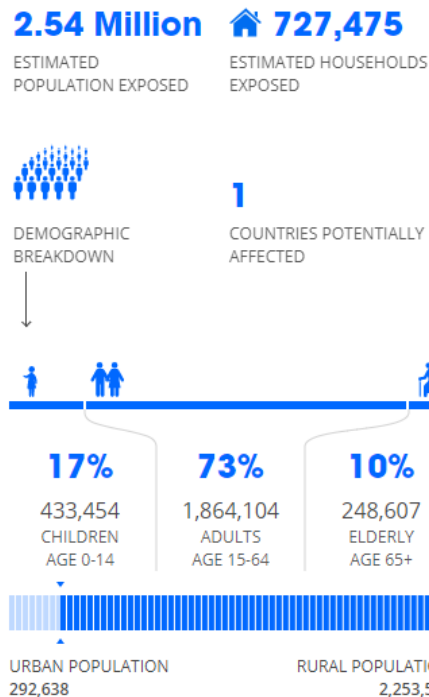
\$35.8 Billion

ESTIMATED REPLACEMENT VALUE OF BUILDINGS AND INFRASTRUCTURE



Estimations of capital and population exposures by Pacific Disaster Center

POPULATION EXPOSED



MAP ACTION

Map shows those Thailand provinces most affected by the impact of Tropical Storm Podul and Tropical Depression Kajiki as at 20 September 2019.

AFFECTED

- Affected
- Most Affected

The AHA Centre has closely been monitoring since 27 August 2019 due to the development of TS PODUL, followed by TD KAJIKI on 3 Sep 2019, which have been affected Philippines, Viet Nam, Lao PDR, and Thailand.

Data sources: Boundaries: Royal Thai Survey Department; Affected Areas: AHA Centre

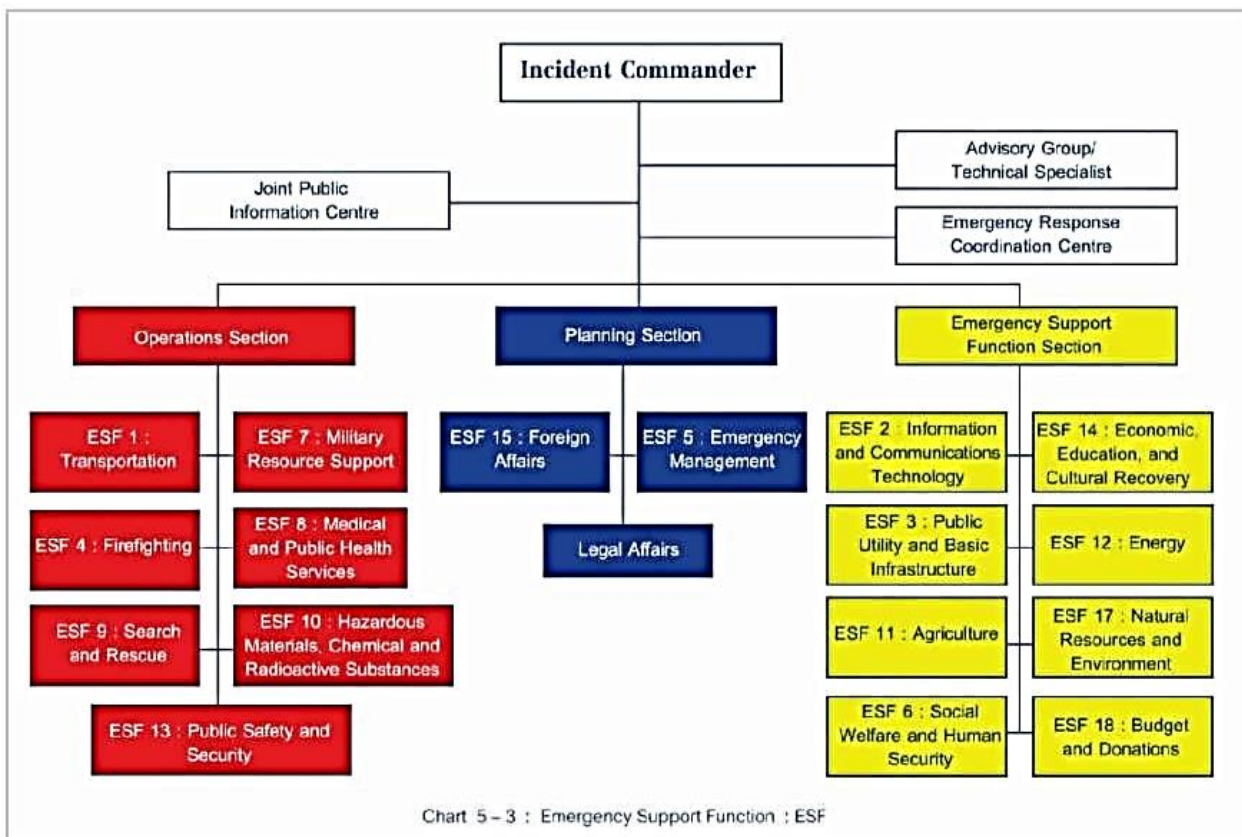
Thailand: Flooding - Affected Provinces (as of 20 Sep 2019)

Created: 13 September 2019 UTC+07:00
Map Document: 13 September 2019
Projection & Datum: WGS 1984
Slide Number: FL-2019-000103-LAO
Produced by: MapAction
Supported by the German Federal Foreign Office and the Ministry of Foreign Affairs of the Netherlands. The depiction and use of boundaries, names and associated data shown here do not imply endorsement or acceptance by MapAction.

Thailand

- Following the passage of Tropical Storm PODUL on 29 August 2019, and under the influence of Tropical Depression KAJIKI on 3 September 2019 which have enhanced the Southwest Monsoon, the Department of Disaster Prevention and Mitigation ([DDPM](#)) of Thailand has reported that flooding has affected 32 provinces across Thailand, and particularly in the northeastern part.
- As of today (20 September 2019) at 06:00 (UTC +7), the Government of Thailand has announced emergency in 28 provinces as disaster affected areas. Meanwhile, the northeast provinces of Ubon Ratchathani, Yasothon, Roi Et, and Sri Saket are the most affected provinces and are still facing critical situations, with number of evacuated people in Ubon Ratchathani and Sri Saket reach up to 20,000 in 49 evacuation centres.
- The Government of Thailand has elevated the status of emergency to Level 3 (the highest is Level 4) since 18 September 2019. [DDPM](#) as the central government agency responsible for disaster management in Thailand has been actively monitoring, coordinating, facilitating, providing assistance and support since the floods began.
- The authorities have deployed rescue and emergency teams to help the affected population, and has mobilised resources to respond to the floods including water purification, trucks, water pumps. In addition, King Rama X deployed 4 Mobile Royal Kitchen as well as more than 10,000 relief bags.

National Disaster Level 3: Organization Structure



Thailand

- According to the Thai Meteorological Department ([TMD](#)), from 20-22 September 2019 heavy rain is expected over the northern, north-eastern, and upper central provinces of Thailand.
- The situation, however, is still within the capacity of the Government of Thailand, and no request of international assistance as of this reporting period.
- The AHA Centre has closely been monitoring since 27 August 2019 due to the development of Tropical Storm PODUL, followed by Tropical Depression KAJIKI on 3 September 2019, which have been affected Philippines, Viet Nam, Lao PDR, and Thailand.
- the AHA Centre has heightened its monitoring and requested emergency satellite observation and derived data from Sentinel Asia through Asian Disaster Reduction Center ([ADRC](#)), to estimate the flood extent and conducting damage analysis.
- DELSA relief item and In-Country ASEAN-ERAT Thailand have been put on stand-by for possible deployment to reinforce the effort of DDPM in providing and delivering relief items to the affected population.
- The AHA Centre is continuously monitoring the situation and issue updates should there be any significant development.