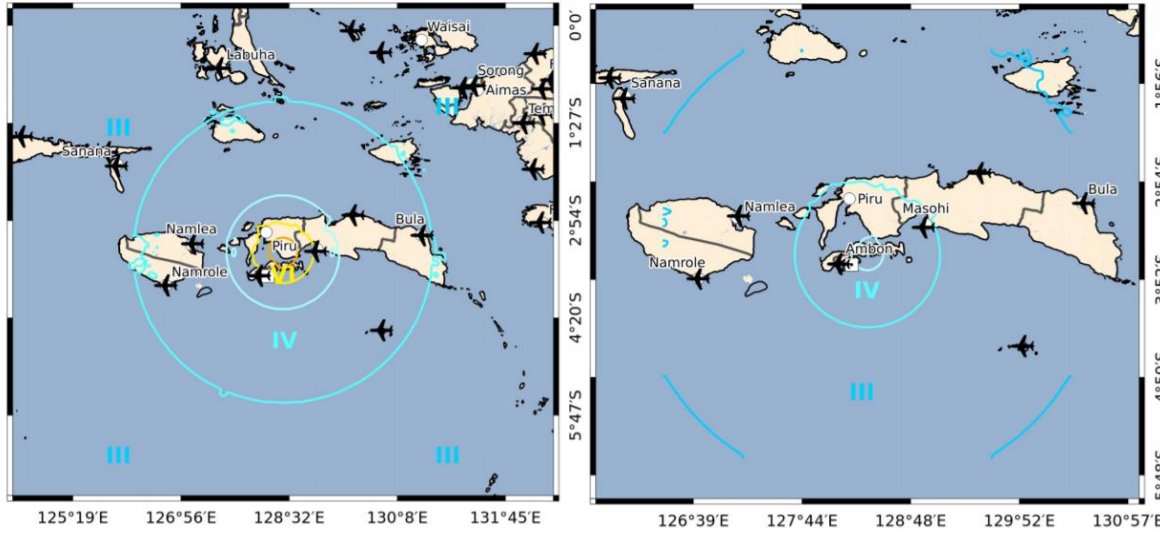


Estimated number of people exposed by MMI level

Intensity	II	III	IV	V	VI	VII	VIII	IX
People Exposed (x1000)	0	109	116	58	108	10	1	0
Perceived Shaking	Weak	Weak	Light	Moderate	Strong	Very Strong	Severe	Violent

Preliminary M 6.8 Earthquake

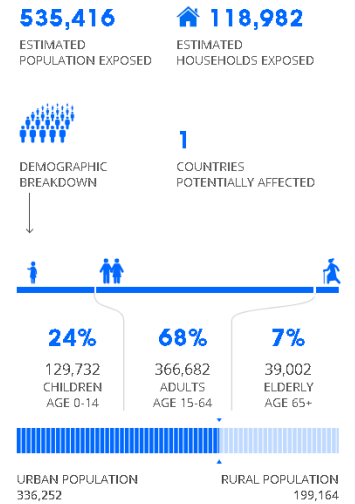
M 5.6 Aftershock



The map from InaSAFE supported by BNPB and BMKG

Name	Population (x1000)	Intensity
Piru	7	VI
Ambon	305	VI
Masohi	102	V
Namlea	28	IV
Namrole	0	IV

POPULATION EXPOSED



CAPITAL EXPOSED

\$3.63 Billion
ESTIMATED REPLACEMENT VALUE OF BUILDINGS AND INFRASTRUCTURE



*The estimated population and capital exposure by Pacific Disaster Center

Indonesia

- Indonesia's Meteorological, Climatological, and Geophysical Agency (**BMKG**) reported a strong magnitude 6.8 earthquake which later updated as 6.5 magnitude, struck Ambon, Maluku Province on Thursday, 26 September 2019, at 06:46 (UTC+7). The earthquake is reported to have a shallow epicentre at 10-km depth, which is located about 40-km north east of Ambon (3.43°S,128.46°E). The earthquake was followed by a M 5.6 aftershock with 10-km depth at 07:39 (UTC+7) and located 18-km north east of Ambon (3.63°S,128.36°E) Ambon and Piru endured Intensity VI, or strong shaking. While several other areas are reported to have experienced light to moderate shaking, such as Intensity V in Masohi, and Intensity IV in Namlea and Namrole.
- According to Indonesia's National Disaster Management Authority (**BNPB**), the shake was strongly felt for 4-5 seconds in Ambon city, and was moderately felt for 3-4 seconds in West Seram Regency. The local NDMO (BPBD) is still gather and conducting the assessment on the ground. As reported by **BNPB's** Emergency Operation Centre (Pusdalops) currently 1 bridge partially damaged in Ambon, and 1 University building lightly damaged.
- The AHA Centre is continuously monitoring the situation and will issue updates should there be any significant development.