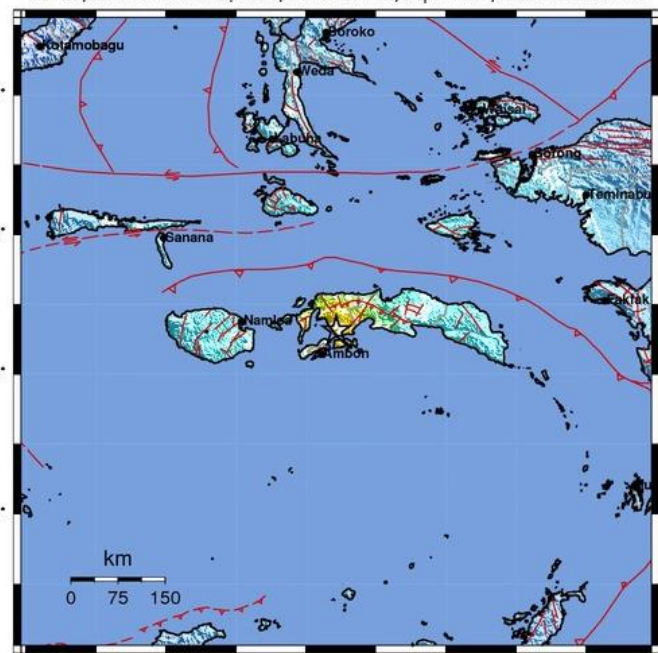




BMKG ShakeMap : Pusat gempa berada di darat 40 km TimurLaut Ambon
SEP 26, 2019 06:46:45 WIB, M:6.8, 3.38S 128.43E, Depth:10km, ID:20190926064645



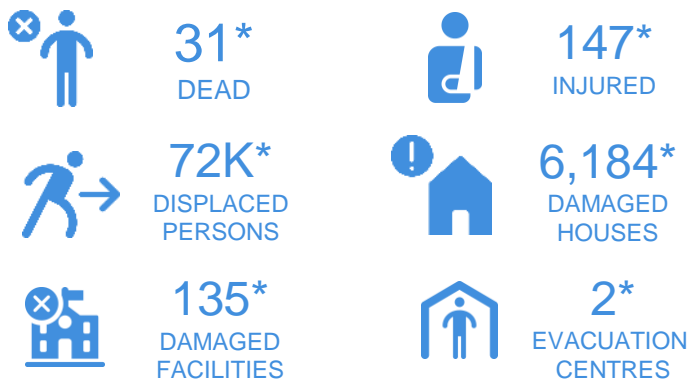
Map Verall 1 Processed Wed Sep 25, 2019 19:55:42 WIB

PERCEIVED SHAKING	Not felt	Weak	Light	Moderate	Strong	Very strong	Severe	Violent	Extreme
POTENTIAL DAMAGE	none	none	none	Very light	Light	Moderate	Mod./Heavy	Heavy	Very heavy
MMI	I	II-III	IV	V	VI	VII	VIII	IX	X+

Scale based upon Worden et al. (2011)

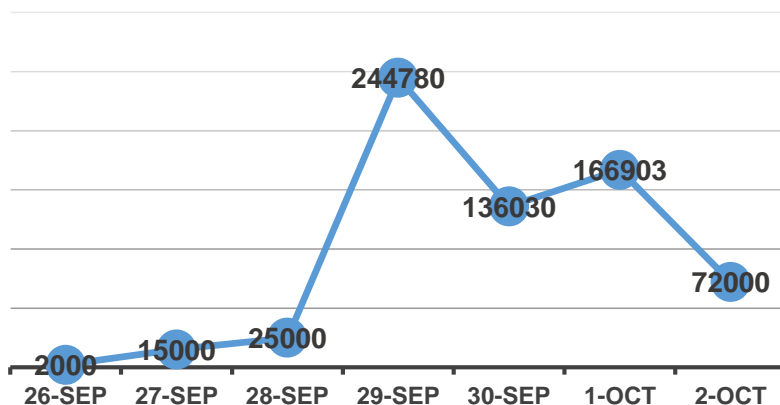
ShakeMap by BMKG

EFFECTS



* Estimations are based on data reported/confirmed by National Disaster Management Organisations of each respective ASEAN Member State and other verified sources

Number of displaced people



Indonesia

- Indonesia's Meteorological, Climatological, and Geophysical Agency ([BMKG](#)) reported a strong magnitude 6.8 earthquake, which was later updated as magnitude 6.5, struck Ambon, Maluku Province on Thursday, 26 September 2019, at 06:46 (UTC+7). The earthquake was reported to have a shallow focus at 10-km depth, located about 40-km north east of Ambon (3.38°S, 128.43°E).
- As of 01 October 2019, [BMKG](#) reported a total of 782 aftershocks, with 82 felt in Kairatu, Masohi, and Banda. Presently, aftershocks are still occurring, with the latest reported magnitude 3.0 earthquake occurring at 09:34 (UTC+7) today, 02 October 2019.
- According to Indonesia's National Disaster Management Authority ([BNPB](#)), there are **false** rumours being spread that a large earthquake and tsunami will occur soon. In addition to the felt aftershocks, this has caused people to be afraid to return to their homes and evacuate to higher ground, where they are harder to be reached. This would also explain the fluctuations in the number of displaced people, as shown in the graph above. [BNPB](#) has been actively denouncing the false rumours, including making a statement on local television this morning (02 October 2019), and approaching evacuees to convince them to return to their homes.
- [BNPB](#) established an emergency response post, set up refugee tents at Haukussy Hospital and Tulehu Hospital, and provided the following aid: 15 refugee tents, 1 field tent, 1 portable light tower, 419 mattresses, 500 blankets, 200 family kits, 500 sets of clothing. Currently, the disaster is still within national capacities.
- The AHA Centre is continuously monitoring the situation and will issue updates should there be any significant development.

DATA SOURCES

AHA Centre Disaster Monitoring & Response System (DMRS); ASEAN Disaster Information Network; Pacific Disaster Center (PDC Global), Indonesia: BMKG, BNPB

DISCLAIMER

The AHA Centre was established in November 2011 by the Association of Southeast Asian Nations (ASEAN) Member States to facilitate cooperation and coordination among the Member States, relevant agencies of the United Nations and international organisations in disaster management and humanitarian assistance.

The use of boundaries, geographic names, related information and potential considerations for response are for reference, not warranted to be error free or implying official endorsement from ASEAN Member States.

© 2019 AHA Centre. All rights reserved. You are receiving this email because you are registered in our distribution list.

Our mailing address is: AHA Centre, GRAHA BNPB 13th Floor, Jl. Raya Pramuka Kav. 38, Jakarta 13120 Indonesia