



ONE ASEAN  
ONE RESPONSE

# WEEKLY DISASTER UPDATE

Week 45  
04 – 10 Nov 2019

- ahacentre.org
- ahacentre
- @ahacentre
- @ahacentre

The AHA Centre, GRAHA BNPB 13th floor,  
Jl. Raya Pramuka Kav. 38, East Jakarta 13120 Indonesia

#### SOURCES

ASEAN Disaster Monitoring & Response System (DMRS); ASEAN Specialised Meteorological Centre (ASMC); Pacific Disaster Center (PDC Global); United Nations Office for the Coordination of Humanitarian Affairs (OCHA)

Indonesia: BMKG; Philippines: NDRRMC, DSWD-DROMIC, PHIVOLCS; Viet Nam: VNDMA

Various news agencies

#### DISCLAIMER

The AHA Centre was established in November 2011 by the Association of Southeast Asian Nations (ASEAN) Member States to facilitate cooperation and coordination among Member States; relevant agencies of the United Nations and international organisations in disaster management and emergency response.

This update consists of significant natural disaster events that occurred in ASEAN Member States – Brunei Darussalam, Cambodia, Indonesia, Lao PDR, Malaysia, Myanmar, Philippines, Singapore, Thailand, and Viet Nam. The disasters recorded include Drought, Flood, Earthquake, Tsunami, Volcano, Wind, Landslide, and Storm.

The use of boundaries, geographic names, related information, and potential considerations for response are for references, not warranted to be error-free or implying official endorsement from ASEAN Member States.

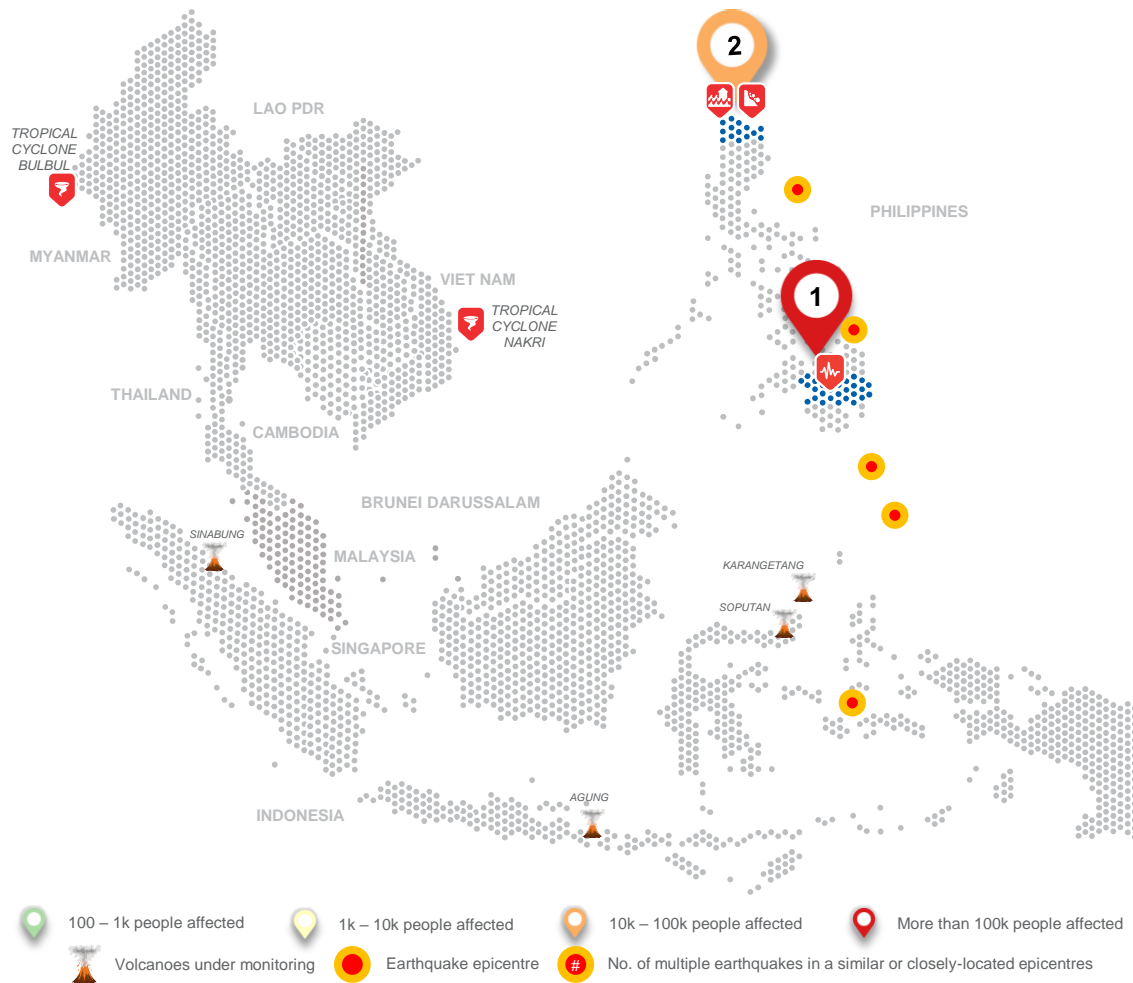
© 2019 AHA Centre.  
All rights reserved.

For inquiries, comments, and/or suggestions,  
you may reach us through [data@ahacentre.org](mailto:data@ahacentre.org)

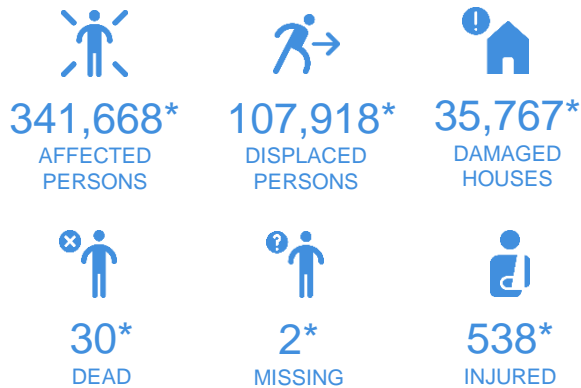


You are receiving this email because you are registered in our distribution list.

SCAN TO SUBSCRIBE



## REGIONAL TALLY



\* Estimations are based on data reported/confirmed by National Disaster Management Organisations of each respective ASEAN Member State and other verified sources

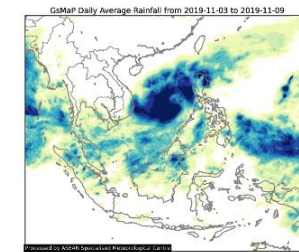
## REGIONAL SUMMARY:

During the week, Tropical Depression NAKRI has intensified into a Typhoon while traversing the West Philippine Sea but weakened into a depression upon landfall in Viet Nam. The *Tail-End of a Cold Front*, associated with the typhoon, brought moderate with occasional heavy rains in Luzon, Philippines. Weather situation update from the Viet Nam Disaster Management Authority (VNDMA) stated that as NAKRI moves northwest of Viet Nam, it is expected to bring moderate to heavy rains as it goes inland and weakens into a low pressure area in Cambodia.

## HIGHLIGHT:

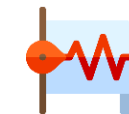
The Philippines' National Disaster Risk Reduction Management Council (NDRRMC) reported that Typhoon NAKRI (locally named QUIEL) brought persistent and heavy rains in provinces of northern Luzon that caused rain-induced landslides, coastal wave surges and flooding that affected more than 20,000 families (84,000 persons) and temporarily displaced over 5,000 persons in 41 evacuation centres. For the Cotabato earthquake response, the NDRRMC reported that there are still more than 56,000 displaced persons staying in 75 evacuation centres and a validated total of 37,500 damaged infrastructures. The Department of Social Welfare and Development (DSWD) and NDRRMC continue to verify data from their respective field offices related to both events and stated that the response activities are still within the national and local government's capacities.

## HYDRO-METEO-CLIMATOLOGICAL:



According to the ASEAN Specialised Meteorological Centre (ASMC), Typhoon NAKRI brought scattered showers to the eastern parts of the Mekong sub-region. On the western coast, Tropical Cyclone BULBUL brought showers to northern Myanmar. There were also scattered showers over northern Sumatra (Indonesia) and Peninsular Malaysia. In contrast, the weather was dry over Kalimantan, southern Sumatra and the Java Sea area, in Indonesia.

## GEOPHYSICAL:



There were **five (5)** earthquake events with magnitude 5.0 and above that occurred last week, two (2) of which occurred in Indonesia (BMKG) and three (3) in the Philippines (PHIVOLCS). No affected population or damages have occurred as a result of these events.

## OUTLOOK:



The ASMC forecasts that Typhoon NAKRI will bring widespread showers over the eastern parts of the Mekong sub-region. Rainy conditions are also forecasted over the equatorial ASEAN region for the next few days. The prevailing winds are forecasted to blow from the southeast or southwest over the southern ASEAN region. In the northern ASEAN region, winds are forecasted to blow from the northeast or east.