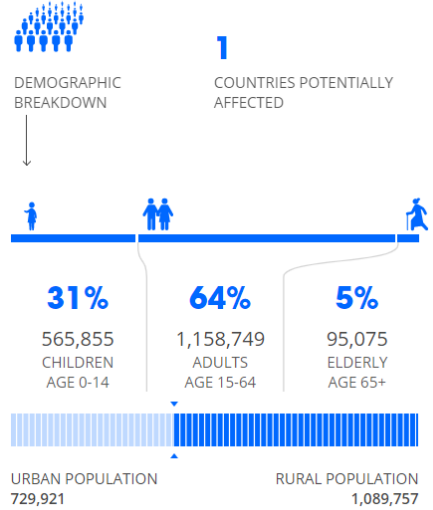


**Population Exposed**

(Estimated exposure by the [PDC](#))

**1.81 Million** ESTIMATED POPULATION EXPOSED  
**343,335** ESTIMATED HOUSEHOLDS EXPOSED



**Initial Effects\***



\*Estimations are based on data reported/confirmed by National Disaster Management Organisations of each respective ASEAN Member State and other verified sources

**Philippines**

- Tropical Storm KALMAEGI (locally named RAMON in the Philippines), which strengthened into a Severe Tropical Storm on 18 November 2019, has now further developed into a Typhoon and currently moving slowly west-northwest towards Babuyan Islands, north of Luzon, Philippines as of 10:00 (UTC+7).
- According to forecast by the Joint Typhoon Warning Center ([JTWC](#)), Typhoon KALMAEGI is moving at about 4 kph, and is expected to weaken over the next 24 hours. Based on the current forecast (the storm's center and path), the Typhoon is within 112 km from northern seaboard of the Philippines, and the center is expected to make landfall in the afternoon or evening today, 19 November 2019, with sustained winds of about 148 kph.
- The Philippines Atmospheric, Geophysical and Astronomical Services Administration ([PAGASA](#)) stated that moderate with frequent heavy rains will prevail over Batanes, northern portion of Cagayan (including the Babuyan Islands), Apayao and the northern portion of Ilocos Norte provinces.
- The Philippines' National Disaster Risk Reduction Management Council ([NDRRMC](#)) reported flood incidents, ranging from 0.5m to 1m of flood water, in 15 barangays/villages in Camarines Sur and Romblon provinces due to persistent heavy rains associated with the typhoon.
- The AHA Centre is continuously monitoring and will issue an update should there be any significant development of the situation.