



ONE ASEAN
ONE RESPONSE

WEEKLY DISASTER UPDATE

Week 01

30 Dec 19 – 05 Jan 20

- ahacentre.org
- ahacentre
- @ahacentre
- @ahacentre

The AHA Centre, GRAHA BNPB 13th floor,
Jl. Raya Pramuka Kav. 38, East Jakarta 13120 Indonesia

SOURCES

ASEAN Disaster Monitoring & Response System (DMRS);
ASEAN Specialised Meteorological Centre (ASMC); Pacific
Disaster Center (PDC Global); United Nations Office for the
Coordination of Humanitarian Affairs (OCHA)

Indonesia: BNPB, BMKG;

Various news agencies

DISCLAIMER

The AHA Centre was established in November 2011 by the
Association of Southeast Asian Nations (ASEAN) Member
States to facilitate cooperation and coordination among
Member States, relevant agencies of the United Nations
and international organisations in disaster management and
emergency response.

This update consists of significant natural disaster events
that occurred in ASEAN Member States – Brunei
Darussalam, Cambodia, Indonesia, Lao PDR, Malaysia,
Myanmar, Philippines, Singapore, Thailand, and Viet Nam.
The disasters recorded include Drought, Flood, Earthquake,
Tsunami, Volcano, Wind, Landslide, and Storm.

The use of boundaries, geographic names, related
information, and potential considerations for response are
for references, not warranted to be error-free or implying
official endorsement from ASEAN Member States.

© 2019 AHA Centre.
All rights reserved.

For inquiries, comments, and/or suggestions,
you may reach us through data@ahacentre.org

You are receiving this email because you are
registered in our distribution list.



SCAN TO SUBSCRIBE



REGIONAL TALLY



* Estimations are based on data reported/confirmed by National Disaster Management Organisations of each respective ASEAN Member State and other verified sources

01 Indonesia:
Massive Floods in Greater Jakarta
01 Jan 2020 | More details at:
<http://adinet.ahacentre.org/reports/view/1549>

02 Indonesia:
Flooding in Sangihe
04 Jan 2020 | More details at:
<http://adinet.ahacentre.org/reports/view/1550>

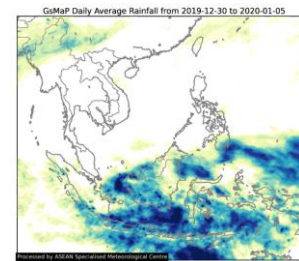
REGIONAL SUMMARY:

Flooding events in the southern part of ASEAN region are still occurring as the Southwest Monsoon continuous. According to [ASMC](#), moderate smoke haze continued to be observed over northern and central Thailand, as well as in parts of Cambodia. Hotspots with smoke plumes in northern Cambodia are more pronounced in the afternoon. The smoke haze has been blown to the west by the prevailing winds.

HIGHLIGHT:

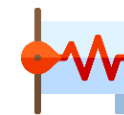
During year end of 2019, a continuous heavy rain has occurred the Greater Jakarta. The floods started in the early morning of 1 January 2020, and have spread out throughout the day. Many reports said that it was the worst rainfall in over a decade in Jakarta, which has caused half a million people affected and more than 100,000 displaced. The Indonesia's National Disaster Management Authority ([BNPB](#)) has been leading national coordination with other national agencies to support the local disaster management authority (BPBD). [BNPB](#) has mobilised support to the affected people by dispatching relief items, deploying personnel, disseminating information, and establishing evacuation centres. Currently, most of the displaced people have returned to their home, although some evacuation efforts in Banten and West Java Provinces, are still ongoing. In-country ASEAN Emergency Response and Assessment Team (ASEAN-ERAT) Indonesia is mobilised to reinforce [BNPB](#) in providing technical assistance in the management of evacuation site and provision of minimum services at the Jati Asih evacuation site of [BNPB](#).

HYDRO-METEO-CLIMATOLOGICAL:



Northeast Monsoon has brought a massive rainfall intensity across the southern part of ASEAN region. As seen on the left picture, the average rainfall particularly in Indonesia could reach more than 50mm/day, which have potential to caused floods and landslides in several areas. Meanwhile, Mekong sub-region remain generally dry.

GEOPHYSICAL:



There were **three (3)** earthquake events with magnitude 5.0 and above that occurred last week in Indonesia ([BMKG](#)). None of these earthquakes have caused significant impacts or damages. Meanwhile, Anak Krakatau volcano (Indonesia) spewed out 1-2km high ash cloud, although the alert status remains in level II.

OUTLOOK:



The ASEAN Specialised Meteorological Centre ([ASMC](#)) reported that Dry conditions are expected to persist over the northern ASEAN region, which may lead to further escalation of hotspot activities in the Mekong sub-region. Scattered rain showers can be expected over many parts of the southern ASEAN region, particularly Indonesia.