



ONE ASEAN
ONE RESPONSE

WEEKLY DISASTER UPDATE

Week 11
09 – 15 Mar 2020

- ahacentre.org
- ahacentre
- @ahacentre
- @ahacentre

The AHA Centre, GRAHA BNPB 13th floor,
Jl. Raya Pramuka Kav. 38, East Jakarta 13120 Indonesia

SOURCES

ASEAN Disaster Monitoring & Response System (DMRS);
ASEAN Specialised Meteorological Centre (ASMC), Pacific
Disaster Center (PDC Global)

Indonesia: BNPB, BMKG, PVMBG; Philippines: PHIVOLCS

Various news agencies

DISCLAIMER

The AHA Centre was established in November 2011 by the
Association of Southeast Asian Nations (ASEAN) Member
States to facilitate cooperation and coordination among
Member States, relevant agencies of the United Nations
and international organisations in disaster management and
emergency response.

This update consists of significant natural disaster events
that occurred in ASEAN Member States – Brunei
Darussalam, Cambodia, Indonesia, Lao PDR, Malaysia,
Myanmar, Philippines, Singapore, Thailand, and Viet Nam.
The disasters recorded include Drought, Flood, Earthquake,
Tsunami, Volcano, Wind, Landslide, and Storm.

The use of boundaries, geographic names, related
information, and potential considerations for response are
for reference only, not warranted to be error-free or implying
official endorsement from ASEAN Member States.

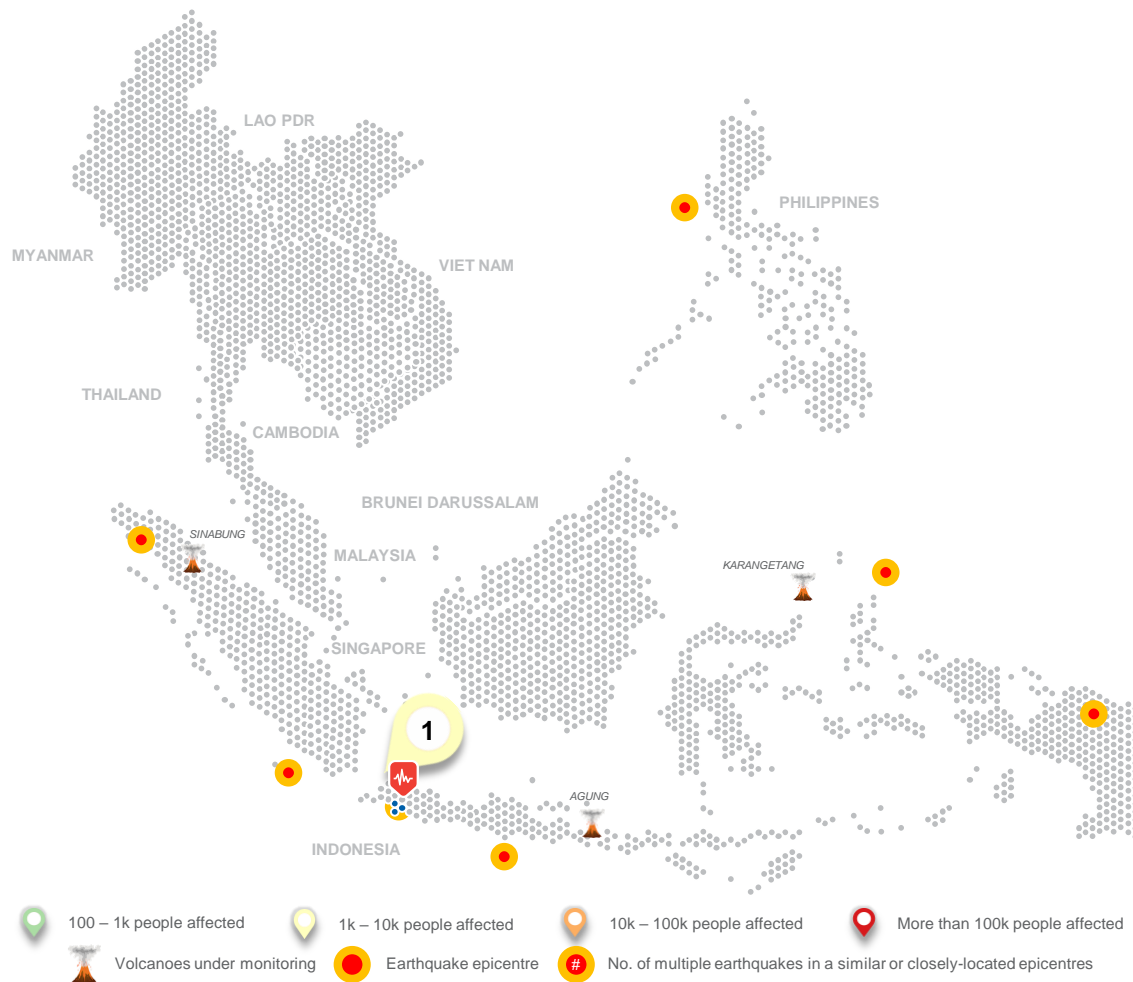
© 2020 AHA Centre.
All rights reserved.

For inquiries, comments, and/or suggestions,
you may reach us through dma@ahacentre.org



You are receiving this email because you are
registered in our distribution list.

SCAN TO SUBSCRIBE



REGIONAL TALLY



01 Indonesia:
Earthquake in West Java
10 March 2020 | More details at:
<http://adinet.ahacentre.org/reports/view/1580>

Note: Estimations are based on data reported/confirmed by National Disaster Management
Organisations of each respective ASEAN Member State and other verified sources

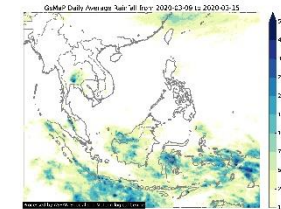
REGIONAL SUMMARY:

Scattered and isolated rain showers were reported in several parts of Indonesia, resulting to localised flooding events. None of which had significant impact. Meanwhile, several earthquakes of at least magnitude 5.0 were detected in Indonesia and the Philippines. One of which resulted to a minor disaster in Indonesia.

HIGHLIGHT:

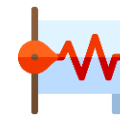
The National Meteorology, Hydrology, and Geophysics Service of Indonesia, Badan Meteorologi, Klimatologi, dan Geofisika ([BMKG](#)) reported of a magnitude 5.0 earthquake with epicentre located in Sukabumi City, West Java – about 112 km south of the capital city of Jakarta. According to the National Disaster Management Organisation, Badan Nasional Penanggulangan Bencana ([BNPB](#)), the earthquake resulted to several damaged houses and displaced a few people. Geophysics Experts said that the earthquake was caused by the movement of the local fault line. With minimal impact, this disaster event is considered a minor one.

HYDRO-METEO-CLIMATOLOGICAL:



The ASEAN Specialised Meteorological Centre ([ASMC](#)) reported the continued prevalence of dry weather over the Mekong sub-region, with observed moderate to dense haze in northern Thailand and Lao PDR, and eastern Myanmar. Meanwhile, there were still reported scattered and isolated rain showers across Indonesia, albeit less frequent and strong than in previous weeks.

GEOPHYSICAL:



There were seven (7) earthquakes with magnitude 5.0 and above that occurred in Indonesia ([BMKG](#)) and the Philippines ([PHIVOLCS](#)). One of these earthquakes, specifically in Indonesia, resulted to a minor disaster event. Meanwhile, three (3) volcanoes, all in Indonesia ([PVMBG](#)), are under monitoring.

OUTLOOK:



The ASEAN Specialised Meteorological Centre ([ASMC](#)) forecasts a moderate chance of heavy rainfall for parts of southern Borneo and Java, and drier conditions for southern Thailand, Peninsular Malaysia, northern Borneo, and the Philippines. There is also an increased chance of temperature extremes in the region. Lastly, a Madden-Julian Oscillation is expected to develop which could bring increased rainfall to parts of the Maritime Continent.