



ONE ASEAN
ONE RESPONSE

WEEKLY DISASTER UPDATE

Week 16
13 – 19 Apr 2020

- ahacentre.org
- ahacentre
- @ahacentre
- @ahacentre

The AHA Centre, GRAHA BNPB 13th floor,
Jl. Raya Pramuka Kav. 38, East Jakarta 13120 Indonesia

SOURCES

ASEAN Disaster Monitoring & Response System (DMRS); ASEAN Specialised Meteorological Centre (ASMC); Pacific Disaster Center (PDC Global)

Indonesia: BMKG, PVMBG; Philippines: PHIVOLCS; Thailand: Thai Meteorological Department

European Civil Protection and Humanitarian Aid Operations and Emergency Response Coordination Centre (ERCC) Portal; Various news agencies

DISCLAIMER

The AHA Centre was established in November 2011 by the Association of Southeast Asian Nations (ASEAN) Member States to facilitate cooperation and coordination among Member States, relevant agencies of the United Nations and international organisations in disaster management and emergency response.

This update consists of significant natural disaster events that occurred in ASEAN Member States – Brunei Darussalam, Cambodia, Indonesia, Lao PDR, Malaysia, Myanmar, Philippines, Singapore, Thailand, and Viet Nam. The disasters recorded include Drought, Flood, Earthquake, Tsunami, Volcano, Wind, Landslide, and Storm.

The use of boundaries, geographic names, related information, and potential considerations for response are for reference only, not warranted to be error-free or implying official endorsement from ASEAN Member States.

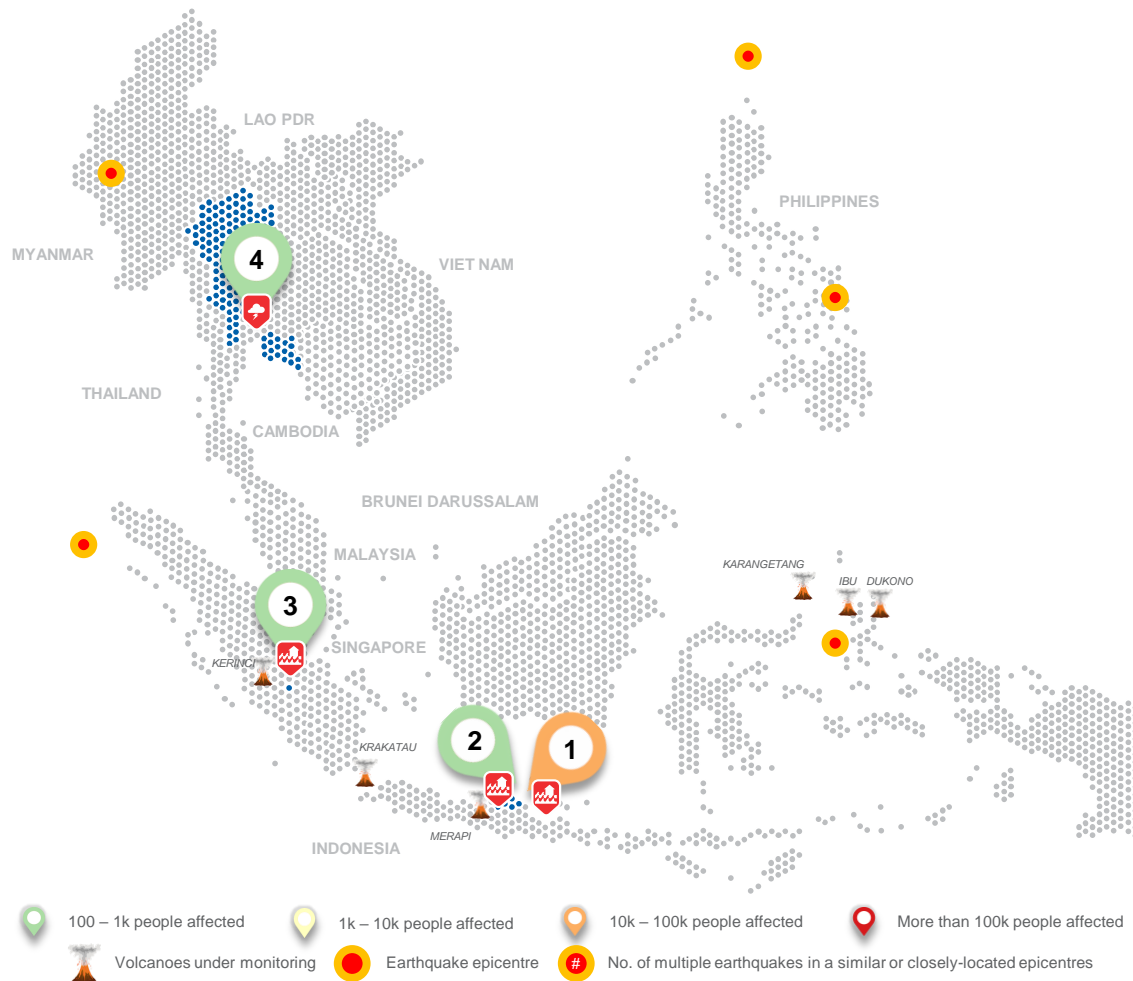
© 2020 AHA Centre.
All rights reserved.

For inquiries, comments, and/or suggestions,
you may reach us through dma@ahacentre.org



You are receiving this email because you are registered in our distribution list.

SCAN TO SUBSCRIBE



- 100 – 1k people affected
- 1k – 10k people affected
- 10k – 100k people affected
- More than 100k people affected
- Volcanoes under monitoring
- Earthquake epicentre
- No. of multiple earthquakes in a similar or closely-located epicentres

REGIONAL TALLY



Note: Estimations are based on data reported/confirmed by National Disaster Management Organisations of each respective ASEAN Member State and other verified sources

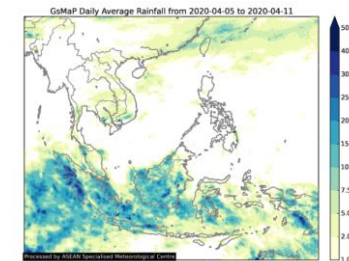
REGIONAL SUMMARY:

The region was rocked by several earthquakes beyond magnitude 5.0 observed in Myanmar, Indonesia, and the Philippines. Scattered and isolated rain showers were reported in southern part of the region, resulting to localised flooding in some parts of Indonesia. UN OCHA reported flooding across Lamongan District contributing to most of the affected persons. Severe storms were also reported in Northern provinces of Thailand causing two casualties as reported by the Thai Meteorological Department and significant contribution to the number of affected persons.

HIGHLIGHT:

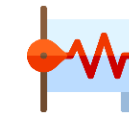
The National Disaster Management Authority of Indonesia (BNPB) reported a case of flooding in Jambi Province, Indonesia. The flood caused by high rainfall intensity has inundated houses and roads. The European Civil Protection and Humanitarian Aid Operations Portal (ECHO) reported significant numbers of affected people and damaged houses for the flooding in Jambi and East Java provinces. Local disaster management authority is mobilising its resource to distribute logistic to the affected area and anticipating the collateral hazard.

HYDRO-METEO-CLIMATOLOGICAL:



The ASEAN Specialised Meteorological Centre (ASMC) reported the continued persistence of dry weather in the Mekong sub-region. In fact several hotspots and smoke haze clustered detected in Laos and Myanmar. On the other hand, the southern ASEAN region continued to experience scattered rain showers.

GEOPHYSICAL:



Five (5) moderate earthquakes with magnitude between 5.0 to 6.0 were observed in Indonesia (BMKG) and the Philippines (PHIVOLCS). Meanwhile, six (6) volcanoes in Indonesia (PVMBG), show increasing activities. However the alert level remain in level 2 on a scale of 4. They are all under closely monitoring.

OUTLOOK:



The ASEAN Specialised Meteorological Centre (ASMC) forecasts a small increased chance of heavy rainfall for parts of eastern equatorial region. Drier conditions are forecasted to intensify in Southern Myanmar, Thailand, Cambodia and parts of the Philippines. The extreme hot conditions are expected to persist in Borneo and the Philippines as well as develop in Thailand, Lao PDR and Southern parts of Indonesia.

Indonesia:

01 Flooding in Lamongan Regency, East Java
11 – 13 Apr 2020
<http://adinet.ahacentre.org/reports/view/1605>

02 Flooding in Tuban Regency, East Java
14 April 2020
<http://adinet.ahacentre.org/reports/view/1606>

03 Flooding in Bungo Regency, Jambi
14 April 2020
<http://adinet.ahacentre.org/reports/view/1606>

Thailand:
04 Storms in Northern, North-eastern, and Central provinces of Thailand
15 Apr 2020
<http://adinet.ahacentre.org/reports/view/1607>