



ONE ASEAN  
ONE RESPONSE

# WEEKLY DISASTER UPDATE

Week 23  
01 – 07 June 2020

- ahacentre.org
- ahacentre
- @ahacentre
- @ahacentre

The AHA Centre, GRAHA BNPB 13th floor,  
Jl. Raya Pramuka Kav. 38, East Jakarta 13120 Indonesia

### SOURCES

ASEAN Disaster Monitoring & Response System (DMRS);  
ASEAN Specialised Meteorological Centre (ASMC);

Indonesia: BNPB, BPBD, BMKG, PVMBG;  
Philippines: PHIVOLCS  
Thailand: DDPM

Various news agencies

### DISCLAIMER

The AHA Centre was established in November 2011 by the Association of Southeast Asian Nations (ASEAN) Member States to facilitate cooperation and coordination among Member States, relevant agencies of the United Nations and international organisations in disaster management and emergency response.

This update consists of significant natural disaster events that occurred in ASEAN Member States – Brunei Darussalam, Cambodia, Indonesia, Lao PDR, Malaysia, Myanmar, Philippines, Singapore, Thailand, and Viet Nam. The disasters recorded include Drought, Flood, Earthquake, Tsunami, Volcano, Wind, Landslide, and Storm.

The use of boundaries, geographic names, related information, and potential considerations for response are for reference only, not warranted to be error-free or implying official endorsement from ASEAN Member States.

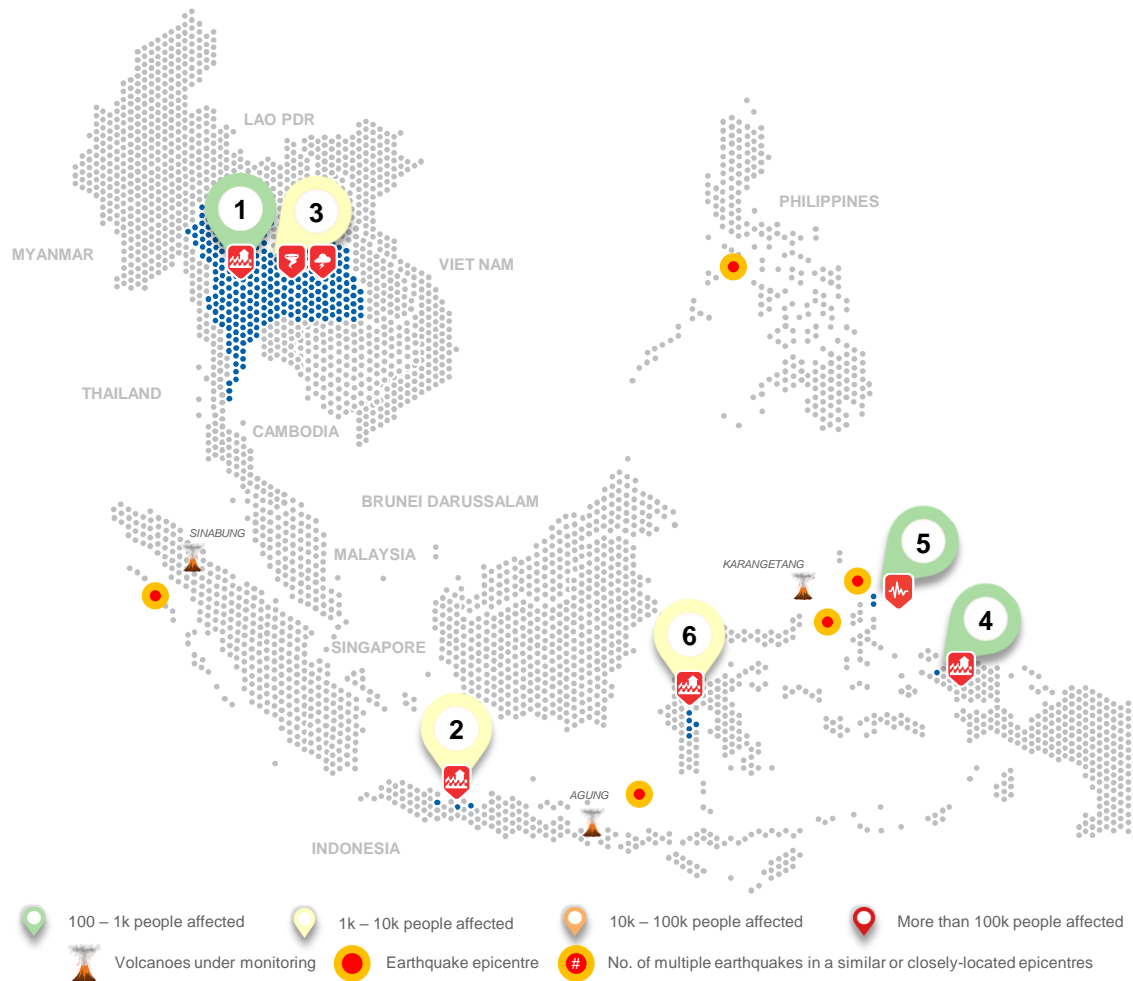
© 2020 AHA Centre.  
All rights reserved.

For inquiries, comments, and/or suggestions,  
you may reach us through [dma@ahacentre.org](mailto:dma@ahacentre.org)



You are receiving this email because you are registered in our distribution list.

SCAN TO SUBSCRIBE



- 100 – 1k people affected
- 1k – 10k people affected
- 10k – 100k people affected
- More than 100k people affected
- Volcanoes under monitoring
- Earthquake epicentre
- No. of multiple earthquakes in a similar or closely-located epicentres

## REGIONAL TALLY



Note: Estimations are based on data reported/confirmed by National Disaster Management Organisations of each respective ASEAN Member State and other verified sources

### 01 Thailand, Flooding in North and Northeastern Regions

01 Jun 2020 | More details at:  
<http://adinet.ahacentre.org/reports/view/1674>

### 02 Indonesia, Flooding in Central and West Java

02, 04, 07 Jun 2020 | More details at:  
<http://adinet.ahacentre.org/reports/view/1671>  
<http://adinet.ahacentre.org/reports/view/1673>  
<http://adinet.ahacentre.org/reports/view/1679>

### 03 Thailand, Winds and Storms in North, Northeast, Central, and Eastern Regions

01-07 Jun 2020 | More details at:  
<http://adinet.ahacentre.org/reports/view/1675>

### 04 Indonesia, Flooding in Sorong, West Papua

04 Jun 2020 | More details at:  
<http://adinet.ahacentre.org/reports/view/1672>

### 05 Indonesia, Earthquake in North Maluku

05 Jun 2020 | More details at:  
<http://adinet.ahacentre.org/reports/view/1676>

### 06 Indonesia, Flooding in South Sulawesi

06 Jun 2020 | More details at:  
<http://adinet.ahacentre.org/reports/view/1677>

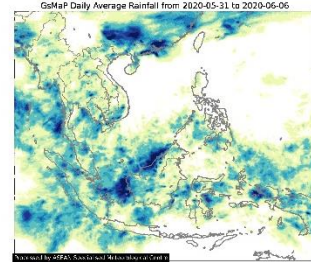
## REGIONAL SUMMARY:

The southwest monsoon prevailing over Andaman Sea and Thailand brought strong winds and thunderstorms affecting 13 provinces in the Northern, Northeastern, Central, and Eastern regions and floods in some areas in the Northern and Northeastern regions of the country as reported by Thailand's Department of Disaster Prevention and Mitigation (DDPM). High tides and waves were reported to have caused flooding in Tegal and Pekalongan Cities in Central Java as well as Cirebon City in West Java. Meanwhile, high intensity rainfall was reported to have caused flooding in Sorong, West Papua, and in Luwu and Sidenreng Rappang in South Sulawesi as reported by the local units of Indonesia's Badan Nasional Penanggulangan Bencana (BNPB). Volcanic activity was recently reported for Dukono and Semeru Volcanoes in Indonesia but remain on Alert Level II (Waspada) according to Indonesia's Pusat Vulkanologi dan Mitigasi Bencana Geologi (PVMBG).

## HIGHLIGHT:

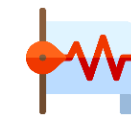
Indonesia's Badan Meteorologi, Klimatologi dan Geofisika (BMKG) recorded a Magnitude 6.8 earthquake on 04 Jun with shaking severity felt at Intensity IV in Morotai Islands. This goes with strong perceived shaking as well as light potential damages per BMKG's advisory. No tsunami advisory was issued. Indonesia's Badan Nasional Penanggulangan Bencana (BNPB) Operational Control Center (Pusdalops) reported that the earthquake caused damage to 128 houses spread in six (6) subdistricts in the Morotai Islands Regency.

## HYDRO-METEO-CLIMATOLOGICAL:



The ASEAN Specialised Meteorological Centre (ASMC) reported that the ASEAN region has been experiencing Southwest Monsoon conditions since late-May 2020. The increased scattered shower activities are attributed to the presence of the southwest monsoon rain band over the northern ASEAN region.

## GEOPHYSICAL:



Five (5) significant earthquakes ( $M \geq 5.0$ ) were recorded in the region from 01-07 June. Meanwhile, three (3) volcanoes in Indonesia (Karangtang, Agung, Sinabung) under Alert Level III (Siaga) (PVMBG) are under close monitoring. Despite recent volcanic activities shown by Dukono and Semeru in Indonesia, they remain on Alert Level II (Waspada).

## OUTLOOK:



The ASMC forecasts that showers are to be expected over many parts of the ASEAN region. Based on a regional assessment of extremes, the ASMC sees a low chance of a heavy rainfall, a small increase in chance of extended dry conditions, and a moderate increase in chance of extreme conditions in parts of the region in the coming week.