



ONE ASEAN  
ONE RESPONSE

# WEEKLY DISASTER UPDATE

Week 27  
29 Jun – 05 Jul 2020

- ahacentre.org
- ahacentre
- @ahacentre
- @ahacentre

The AHA Centre, GRAHA BNPB 13th floor,  
Jl. Raya Pramuka Kav. 38, East Jakarta 13120 Indonesia

## SOURCES

ASEAN Disaster Monitoring & Response System (DMRS);  
ASEAN Specialised Meteorological Centre (ASMC); Pacific  
Disaster Center (PDC-Global); Joint Typhoon Warning  
Center (JTWC); U.S. Geological Survey (USGS)

Indonesia: BNPB, BMKG, PVMBG;  
Malaysia: NADMA;  
Myanmar: FSD  
Philippines: PHIVOLCS;  
Thailand: DDPM;

Various news agencies

## DISCLAIMER

The AHA Centre was established in November 2011 by the  
Association of Southeast Asian Nations (ASEAN) Member  
States to facilitate cooperation and coordination among  
Member States, relevant agencies of the United Nations  
and international organisations in disaster management and  
emergency response.

This update consists of significant natural disaster events  
that occurred in ASEAN Member States – Brunei  
Darussalam, Cambodia, Indonesia, Lao PDR, Malaysia,  
Myanmar, Philippines, Singapore, Thailand, and Viet Nam.  
The disasters recorded include Drought, Flood, Earthquake,  
Tsunami, Volcano, Wind, Landslide, and Storm.

The use of boundaries, geographic names, related  
information, and potential considerations for response are  
for references, not warranted to be error-free or implying  
official endorsement from ASEAN Member States.

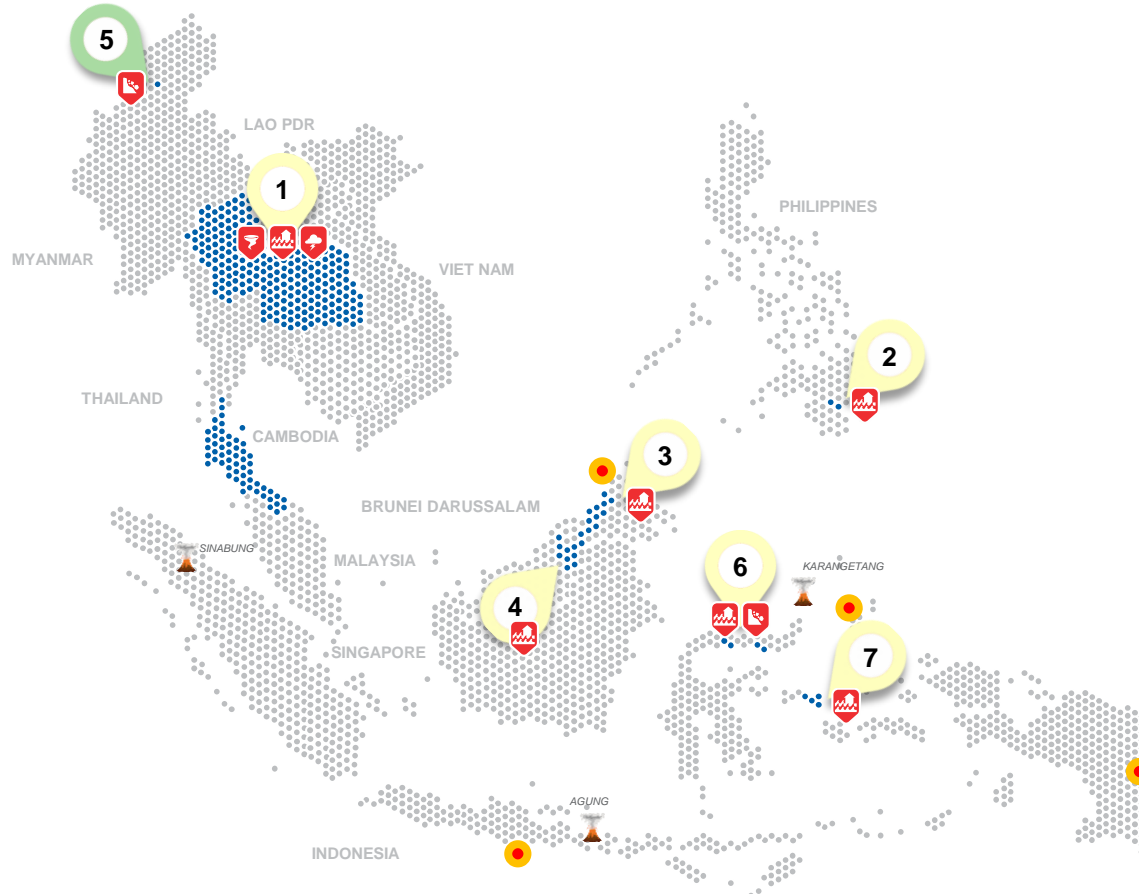
© 2020 AHA Centre.  
All rights reserved.

For inquiries, comments, and/or suggestions,  
you may reach us through [dma@ahacentre.org](mailto:dma@ahacentre.org)



You are receiving this email because you are  
registered in our distribution list.

SCAN TO SUBSCRIBE



- 100 – 1k people affected
- 1k – 10k people affected
- 10k – 100k people affected
- More than 100k people affected
- Volcanoes under monitoring
- Earthquake epicentre
- No. of multiple earthquakes in a similar or closely-located epicentres

## REGIONAL TALLY



Note: Estimations are based on data reported/confirmed by National  
Disaster Management Organisations of each respective ASEAN Member  
State and other verified sources

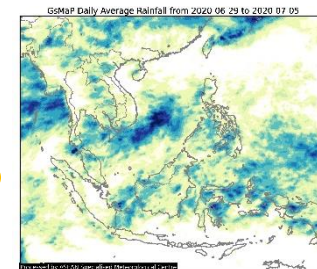
## REGIONAL SUMMARY:

Multiple flooding events have occurred due to high-intensity rainfall in Indonesia, Malaysia, and the Philippines as reported by Indonesia's Badan Nasional Penanggulangan Bencana ([BNPB](#)), the state arms of Malaysia's National Disaster Management Agency ([NADMA](#)), and the local arm of the Philippines' National Disaster Risk Reduction and Management Council ([NDRRMC](#)). Meanwhile, flooding in seven (7) provinces and winds and storms in eight (8) provinces of Thailand were reported by the Department of Disaster Prevention and Mitigation ([DDPM](#)). Lastly, high-intensity rainfall caused a landslide in the Kachin State of Myanmar.

## HIGHLIGHT:

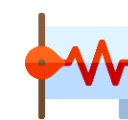
A landslide triggered by heavy rain swept through a jade mining site in Hpakant Township in the Kachin State of Myanmar. The Myanmar Fire Services Department ([FSD](#)) reported 172 deaths and 54 injuries. The death toll is expected to rise as it is feared that there still are people trapped in the mining site. As of reporting, search and rescue operations for survivors and missing bodies are still on-going.

## HYDRO-METEO-CLIMATOLOGICAL:



The ASEAN Specialised Meteorological Centre ([ASMC](#)) reported that the prevailing Southwest Monsoon conditions is expected to continue for the coming July – September 2020 period. This is characterised by increased shower activities in the northern ASEAN region and drier conditions in the southern ASEAN region.

## GEOPHYSICAL:



Four (4) significant earthquakes ( $M \geq 5.0$ ) were recorded in the region by Indonesia's Badan Meteorologi, Klimatologi dan Geofisika ([BMKG](#)) and the U.S. Geological Survey ([USGS](#)). Meanwhile, three (3) volcanoes in Indonesia (Karangetang, Agung, Sinabung) under Alert Level III - Siaga ([PVMBG](#)) are under close monitoring. Lastly, Semeru and Dukono in Indonesia remain on Alert Level II, and Bulusan and Taal in the Philippines remain on Alert Level I despite recent volcanic activity per [PVMBG](#) and the Philippine Institute of Volcanology and Seismology ([PHIVOLCS](#)).

## OUTLOOK:



The [ASMC](#) forecasts wetter conditions over most parts of the ASEAN region. Based on a regional assessment of extremes, the [ASMC](#) sees a small increase in chance of heavy rainfall event in Eastern Malaysia, and Sulawesi and Papua in Indonesia and a small increase in chance of extended dry conditions in the central areas of the Philippines. There will be a moderate increase in chance of extreme hot conditions in southern parts of the maritime continent (Indonesia and Philippines).