

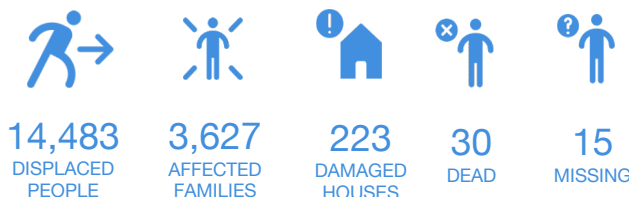
Friday  
17 JUL 2020  
1126 HRS UTC +7

# FLASH FLOOD IN NORTH LUWU, SOUTH SULAWESI, INDONESIA

## FLASH UPDATE #2



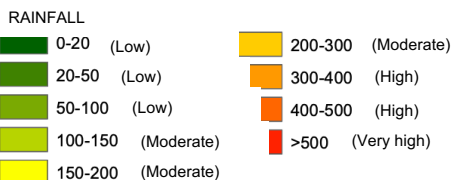
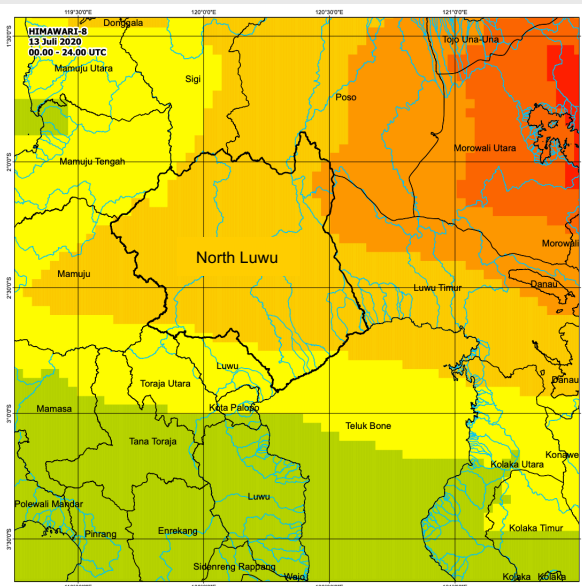
ONE ASEAN ONE RESPONSE



Note: Figures above are estimated based on data reported/confirmed by BNPB and other verified reliable sources

### MAP OF AFFECTED AREA

#### RAINFALL ON 13 JULY 2020



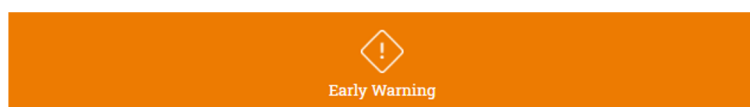
### Indonesia

- The Mayor of North Luwu has declared **state of emergency** at the affected region for 30 days (14 Jul – 12 Aug 2020).
- According to [LAPAN](#), based on satellite image observation 13 July 2020 moderate rainfall (101-300 mm) and heavy rainfall (301-400 mm) caused flooding and landslide multiple locations in North Luwu.
- According to [BMKG](#), moderate to heavy rain is forecasted to occur tomorrow 18 July 2020. It is advisable to avoid high risk areas such as riverbanks and steep slopes.
- According to [BNPB](#), rapid assessment team reported as of 17 July 2020 06:45 WIB, **3,627 households (14,483 person)** were reportedly evacuated, and **30 fatalities** have been recorded while the search is on-going for **15 persons missing** (data collection are still being conducted).
- Urgent needs that have been identified are water, medicine, blanket, female hygiene kits, toddler needs, adult diapers, and home cleaning equipment.
- The AHA Centre is continuously monitoring the event and will issue updates should there be any significant development.

Weather Forecast for Masamba today, 17 July 2020

weather forecast			Temperature (°C)	Humidity (%)
Noon	Night	Early days		
			25 - 32	65-95
Local Rain	Light rain	Cloudy		

Weather Forecast for Masamba tomorrow, 18 July 2020



Moderate to heavy rain that can be accompanied by lightning and strong winds are forecasted in Luwu

#### DATA SOURCES

ASEAN Disaster Monitoring & Response System (DMRS);

Indonesia: Badan Nasional Penanggulangan Bencana (BNPB); Badan Meteorologi, Klimatologi, dan Geofisika (BMKG); National Institute of Aeronautics and Space (LAPAN).

Various news agencies

#### DISCLAIMER

The AHA Centre was established in November 2011 by the Association of Southeast Asian Nations (ASEAN) Member States to facilitate cooperation and coordination among the Member States, relevant agencies of the United Nations, and international organisations in disaster management and humanitarian assistance.

The use of boundaries, geographic names, related information and potential considerations for response are for reference, not warranted to be error free or implying official endorsement from ASEAN Member States.

© 2020 AHA Centre.  
All rights reserved.  
You are receiving this email because you are registered in our distribution list.

Our mailing address is:  
AHA Centre,  
GRAHA BNPB 13<sup>th</sup> Floor,  
Jl. Raya Pramuka Kav. 38,  
Jakarta 13120 Indonesia