



ONE ASEAN
ONE RESPONSE

WEEKLY DISASTER UPDATE

Week 37
07 – 13 Sep 2020

- ahacentre.org
- ahacentre
- @ahacentre
- @ahacentre

The AHA Centre, GRAHA BNPB 13th floor,
Jl. Raya Pramuka Kav. 38, East Jakarta 13120 Indonesia

SOURCES

ASEAN Disaster Monitoring & Response System (DMRS);
ASEAN Specialised Meteorological Centre (ASMC); Joint
Typhoon Warning Centre (JTWC)

Indonesia: BMKG, BNPB, PVMBG;
Philippines: PHIVOLCS
Viet Nam: VNDMA

Various news agencies

DISCLAIMER

The AHA Centre was established in November 2011 by the
Association of Southeast Asian Nations (ASEAN) Member
States to facilitate cooperation and coordination among
Member States, relevant agencies of the United Nations
and international organisations in disaster management and
emergency response.

This update consists of significant natural disaster events
that occurred in ASEAN Member States – Brunei
Darussalam, Cambodia, Indonesia, Lao PDR, Malaysia,
Myanmar, Philippines, Singapore, Thailand, and Viet Nam.
The disasters recorded include Drought, Flood, Earthquake,
Tsunami, Volcano, Wind, Landslide, and Storm.

The use of boundaries, geographic names, related
information, and potential considerations for response are
for reference, not warranted to be error-free or implying
official endorsement from ASEAN Member States.

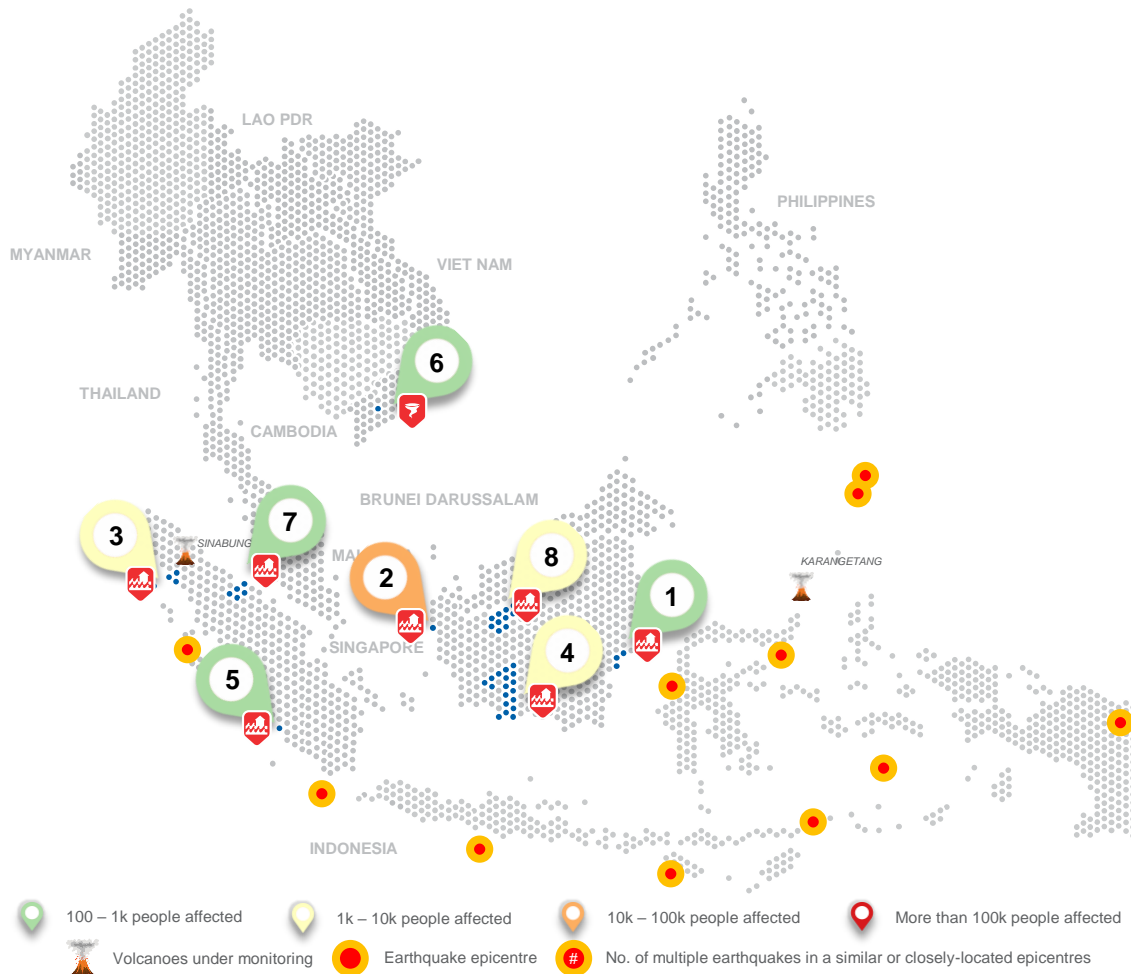
© 2020 AHA Centre.
All rights reserved.

For inquiries, comments, and/or suggestions,
you may reach us through dma@ahacentre.org



You are receiving this email because you are
registered in our distribution list.

SCAN TO SUBSCRIBE



- 100 – 1k people affected
- 1k – 10k people affected
- 10k – 100k people affected
- More than 100k people affected
- Volcanoes under monitoring
- Earthquake epicentre
- No. of multiple earthquakes in a similar or closely-located epicentres

REGIONAL TALLY



Note: Estimations are based on data reported/confirmed by National
Disaster Management Organisations of each respective ASEAN
Member State and other verified sources

01 Indonesia, Flooding in Penajam Paser Utara, East Kalimantan

8 Sep 2020 | More details at: [ADInet Report 1793](#)

02 Indonesia, Flooding in Mempawah, West Kalimantan

9 Sep 2020 | More details at: [ADInet Report 1790](#)

03 Indonesia, Flooding in Aceh Singkil, Aceh

10 Sep 2020 | More details at: [ADInet Report 1791](#)

04 Indonesia, Flooding in Central Kalimantan

10, 11 Sep 2020 | More details at: [ADInet Report 1792](#) [1796](#)

05 Indonesia, Flooding in Bengkulu City

11 Sep 2020 | More details at: [ADInet Report 1795](#)

06 Viet Nam, Tornado in Long Ho, Vinh Long

11 Sep 2020 | More details at: [ADInet Report 1799](#)

07 Indonesia, Flooding in Labuhan Batu Utara, North Sumatra

12 Sep 2020 | More details at: [ADInet Report 1797](#)

08 Indonesia, Flooding in Kapuas Hulu, West Kalimantan

13 Sep 2020 | More details at: [ADInet Report 1798](#)

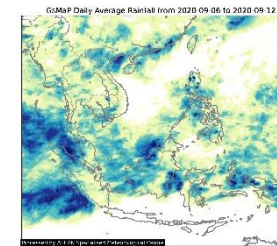
REGIONAL SUMMARY:

High-intensity rainfall, the overflow of some rivers, and poor drainage systems have caused localised flooding events in different parts of Indonesia as reported by the Badan Nasional Penanggulangan Bencana ([BNPB](#)). A tornado also reportedly swept across Vinh Long province in Viet Nam according to the Viet Nam National Disaster Management Authority ([VNDMA](#)).

HIGHLIGHT:

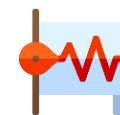
According to [BNPB](#), high intensity rain since 2 Sep has caused flooding in Mempawah Regency, West Kalimantan. As of 9 Sep., 5.2K families/18.1K people have been reportedly affected, and 5.2K houses have been damaged. BPBD Rapid Response Team of Mempawah has conducted rapid assessments and evacuation of residents and coordination with related agencies. On another note, flooding in Lamandau, Central Kalimantan has prompted the regent of Lamandau to issue a decree on emergency response for 10 days (6 – 15 Sep). As of 13 Sep, BNPB Rapid Response Team has finished providing assistance in the regency.

HYDRO-METEO-CLIMATOLOGICAL:



Recorded rainfall values in the region are in accordance with the previous forecast by the ASEAN Specialised Meteorological Centre ([ASMC](#)) that drier conditions will persist in the northern ASEAN region and that wetter conditions will persist for the equatorial region. According to the Joint Typhoon Warning Centre ([JTWC](#)), no tropical cyclone advisories have been issued for the region.

GEOPHYSICAL:



Eleven (11) significant earthquakes ($M \geq 5.0$) were recorded in the region by Indonesia's Badan Meteorologi Klimatologi dan Geofisika ([BMKG](#)) and the Philippine Institute for Volcanology and Seismology ([PHIVOLCS](#)). Mount Sinabung and Karangetang in Indonesia, both on Alert Level III, are under close monitoring. Lastly, Semeru and Dukono, in Indonesia remain on Alert Level II despite recent volcanic activity per [PVMBG](#).

OUTLOOK:



The [ASMC](#) has raised Alert Level 1 marking the start of the dry season in the southern ASEAN region. The dry season is expected to continue into October 2020. According to [ASMC](#)'s regional assessment of extremes, there is a moderate increase in chance for a heavy rainfall event (northern coastal regions of Borneo, northern Sulawesi, west Papua and Southern Thailand) and extreme hot conditions (most parts of mainland southeast Asia, southern parts of southeast Asia, areas around Java, and Nusa Tenggara) in the coming week (14-20 Sep).