



ONE ASEAN
ONE RESPONSE

WEEKLY DISASTER UPDATE

Week 43
19 – 25 Oct 2020

- ahacentre.org
- ahacentre
- @ahacentre
- @ahacentre

The AHA Centre, GRAHA BNPB 13th floor,
Jl. Raya Pramuka Kav. 38, East Jakarta 13120 Indonesia

SOURCES

ASEAN Disaster Monitoring & Response System (DMRS);
ASEAN Specialised Meteorological Centre (ASMC); Joint
Typhoon Warning Centre (JTWC)

Indonesia: BNPB, BMKG, PVMBG;
Philippines: DSWD, PAG-ASA, PHIVOLCS;
Thailand: DDPM

Various news agencies

DISCLAIMER

The AHA Centre was established in November 2011 by the
Association of Southeast Asian Nations (ASEAN) Member
States to facilitate cooperation and coordination among
Member States, relevant agencies of the United Nations
and international organisations in disaster management and
emergency response.

This update consists of significant natural disaster events that
occurred in ASEAN Member States – Brunei
Darussalam, Cambodia, Indonesia, Lao PDR, Malaysia,
Myanmar, Philippines, Singapore, Thailand, and Viet Nam.
The disasters recorded include Drought, Flood, Earthquake,
Tsunami, Volcano, Wind, Landslide, and Storm.

The use of boundaries, geographic names, related
information, and potential considerations for response are
for references, not warranted to be error-free or implying
official endorsement from ASEAN Member States.

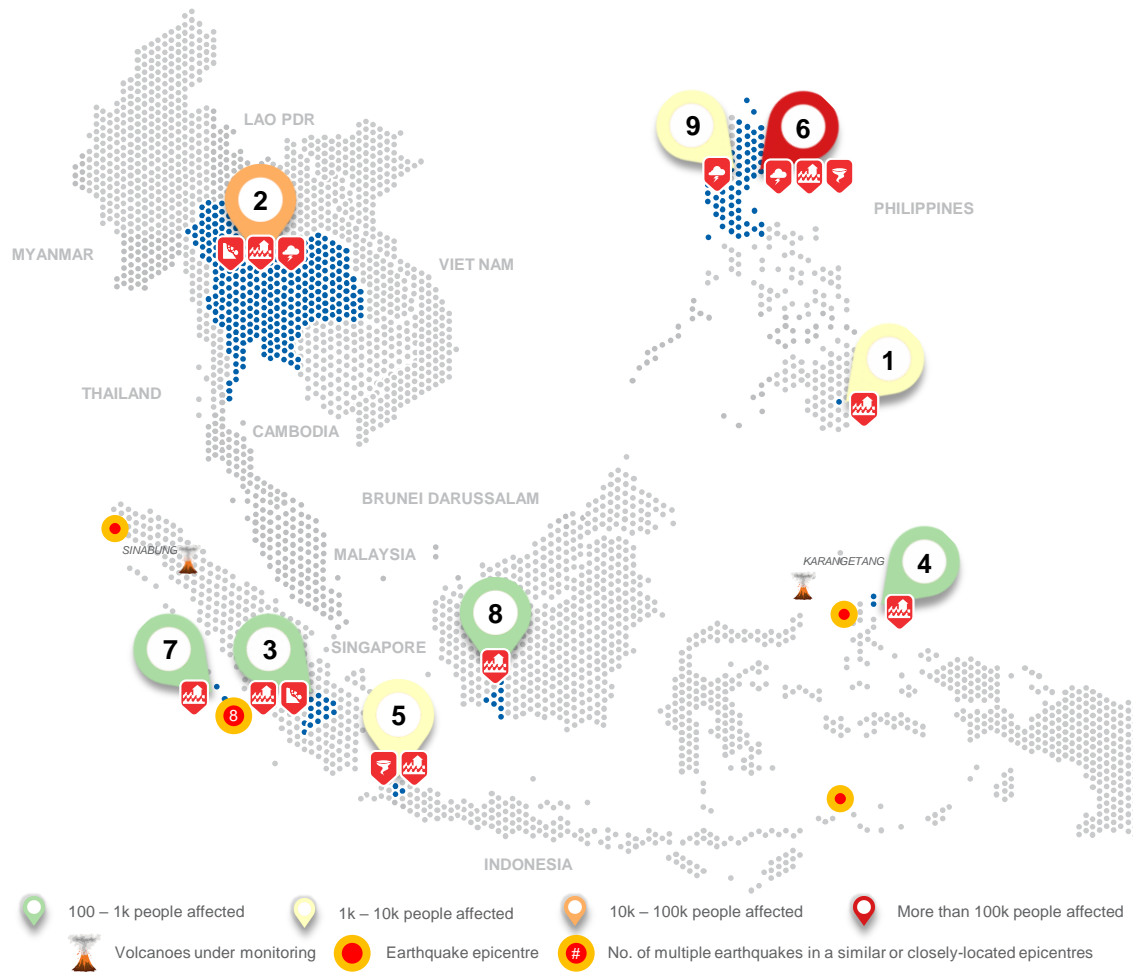
© 2020 AHA Centre.
All rights reserved.

For inquiries, comments, and/or suggestions,
you may reach us through dma@ahacentre.org



You are receiving this email because you are
registered in our distribution list.

SCAN TO SUBSCRIBE



- 100 – 1k people affected
- 1k – 10k people affected
- 10k – 100k people affected
- More than 100k people affected
- Volcanoes under monitoring
- Earthquake epicentre
- No. of multiple earthquakes in a similar or closely-located epicentres

REGIONAL TALLY



Note: Estimations are based on data reported/confirmed by National
Disaster Management Organisations of each respective ASEAN
Member State and other verified sources

01 Philippines, Flooding in Davao City, Davao del Sur (TD Ofel)
19 Oct 2020 | More details at: [ADInet Report 1892](#)

02 Thailand, Flooding, Landslide, and Storms in 33 Provinces
20 Oct 2020 | More details at: [ADInet Report 1877](#)

03 Indonesia, Flooding and Landslide in South Sumatera
21 Oct 2020 | More details at: [ADInet Report 1881 1883](#)

04 Indonesia, Flooding in Morotai Island, North Maluku
21 Oct 2020 | More details at: [ADInet Report 1882](#)

05 Indonesia, Tornado in North Jakarta, Greater Jakarta; Flooding and Tornado in Bekasi and Depok City, West Java
22, 24, 24 Oct 2020 | More details at: [ADInet Report 1884 1890 1893](#)

06 Philippines, Storms in Regions II, III, and CALABARZON (TS Saudel)
22 Oct 2020 | More details at: [ADInet Report 1885](#)

07 Indonesia, Flooding in Mentawai Island, West Sumatera
23 Oct 2020 | More details at: [ADInet Report 1887](#)

08 Indonesia, Flooding in West Kotawaringin, Central Kalimantan
23 Oct 2020 | More details at: [ADInet Report 1888](#)

09 Philippines, Storms in Region II and CAR
23 Oct 2020 | More details at: [ADInet Report 1888](#)

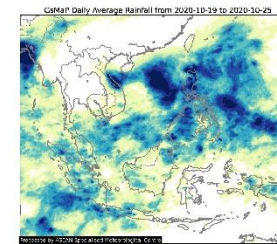
REGIONAL SUMMARY:

Flooding due to heavy rainfall as well as strong winds reportedly affected different parts of Indonesia according to the Badan Nasional Penanggulangan Bencana ([BNPB](#)). In the Philippines, heavy rains due to Tropical Depression INVEST 94W, Tropical Storm SAUDEL, and the tail-end of a frontal system brought heavy rains to multiple regions according to the Philippine Atmospheric, Geophysical and Astronomical Services Administration ([PAG-ASA](#)) and the Department of Social Welfare and Development ([DSWD](#)). Lastly, according to reports from the Department of Disaster Prevention and Mitigation ([DDPM](#)) of Thailand, the combination of weather systems over multiple provinces has caused flooding, landslide, and storms plus the discharge from the Lam Phra Phloeng Dam.

HIGHLIGHT:

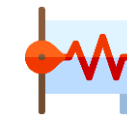
Due to the effects of Tropical Storm SAUDEL (locally named “Pepito”), 163K people have been affected in 230 barangays in Regions II, III, and CALABARZON in the Philippines according to the report from the [DSWD](#). Around 28K people have been displaced into 67 evacuation centres and to the places of their friends/relatives. The [DSWD](#) continues to closely coordinate with the concerned field offices for updates on the situation, assistance, and relief efforts. Assistance was provided to the affected families by the [DSWD](#) and the local government units.

HYDRO-METEO-CLIMATOLOGICAL:



Data from the ASEAN Specialised Meteorological Centre ([ASMC](#)) shows high daily average rainfall in the Philippine Sea, West Philippine Sea, and over most of the Philippines. This is likely due to the development of Tropical Storms SAUDEL, and Typhoon MOLAVE the past week. Evidently, high precipitation values in central Viet Nam can be linked to Tropical Storm SAUDEL.

GEOPHYSICAL:



Eleven (11) significant earthquakes (M≥5.0) were recorded in the region by Indonesia’s Badan Meteorologi Klimatologi dan Geofisika ([BMKG](#)) and the Philippine Institute for Volcanology and Seismology ([PHIVOLCS](#)). Mount Sinabung and Karangetang in Indonesia, both on Alert Level III, are under close monitoring. Lastly, Semeru, Ibu, and Dukono, in Indonesia remain on Alert Level II despite recent volcanic activity per [PVMBG](#).

OUTLOOK:



The [ASMC](#) forecasts wetter conditions in the eastern mainland Southeast Asia and the Philippines but it is noted that this is dependent on tropical cyclone developments. On the other hand, drier conditions are expected to ease over the western maritime continent. There is a small increase in chance for a heavy rainfall event in parts of Viet Nam, Lao PDR, the Philippines, and north Myanmar. Lastly, there is a small increase in chance of extreme hot conditions in Northern Sumatra (Indonesia) and Peninsular Malaysia