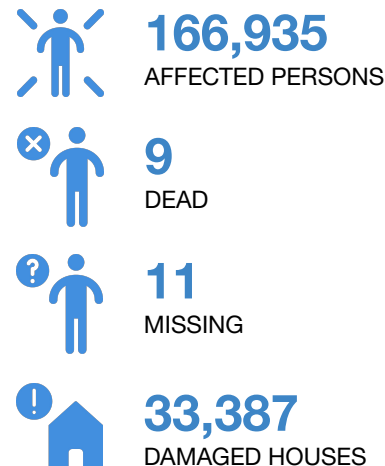




Photo source: VNDMA

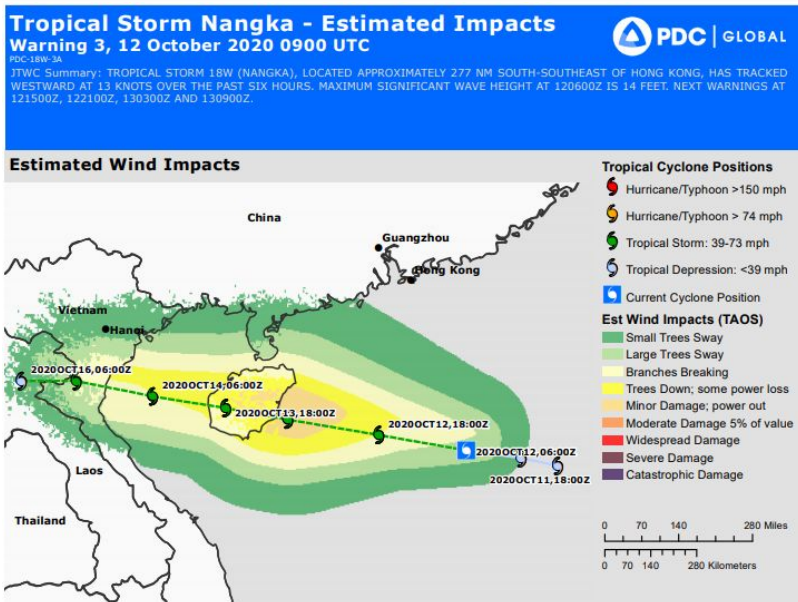
REPORTED IMPACTS



Note: Estimations are based on data reported/confirmed by National Disaster Management Organisations of each respective ASEAN Member State and other verified sources

Viet Nam

- According to the Viet Nam Disaster Management Authority ([VNDMA](#)), as consequences of tropical cyclones on the East Sea, the intertropical convergence zone passing through Central Viet Nam combined with cold air since 06 October 2020, torrential rains happened in the central region of Viet Nam with total rainfall reaching over 1200 mm (Bach Ma - 1697 mm, A Luoi - 1566 mm, and Huong Linh - 1445 mm).
- Constant heavy rain has caused water levels of rivers to rise rapidly resulting in widespread flooding from Ha Tinh to Quang Ngai province with major floods occurring in Quang Binh to Quang Nam province.
- Torrential rain has also resulted in landslides in mountainous areas of Thua Thien Hue and Quang Nam provinces with floods reaching at most 2.0 m particularly in Thua Thien Hue and Quang Tri.
- As of 10 October, the flood has **claimed 9 lives, injured 11 people, and damaged 33,387 houses.**
- The impacts of **TS LINFA** were felt starting on 11 October 10:00 WIB. It brought 150 to 350 mm of rain and at most level 8 sustained wind and level 9 of gusts ([VNDMA](#)).
- The Central Steering Committee for Natural Disaster Prevention and Control has proactively responded, sending several missions to the central provinces to respond to floods and storms. The [VNDMA](#) has called for disaster awareness, in-country assistance, as well as for ministries, organisations, and donors to join hands to support the disaster-ridden people.



- **TS NANGKA:** A tropical cyclone forecast has been issued by Joint Typhoon Warning Center ([JTWC](#)) on 12 October 2020, 09:00:00 GMT. Tropical Storm NANGKA, is located in the NW Pacific Ocean with maximum sustained winds of 75-100 km/h (level 9-10), and wind gusts up to 83 km/h (52 mph). ([NCHMF](#))
- **Movement:** the cyclone is headed Northwest at about 24 km/h (15 mph), and is expected to strengthen over the next 24 hours. It is cautioned, however, that the storm's actual position may shift significantly over the next few days. ([NCHMF](#), [PDC-Global](#))
- **Forecast:** from (12 Oct) until tomorrow morning (13 Oct), there will be very heavy rains in the central provinces with the highest rainfall in the provinces of Quang Tri, Thua Thien Hue about 200-300 mm and even over 350 mm. ([NCHMF](#)). TS NANGKA may further exacerbate the impacts of TS LINFA in these provinces.
- **Potential impacts:** Present models do not show a concentrated population exposed to moderate or severe damaging winds. ([PDC-Global](#))