



ONE ASEAN
ONE RESPONSE

WEEKLY DISASTER UPDATE

Week 44
26 Oct – 01 Nov 2020

ahacentre.org

ahacentre

@ahacentre

@ahacentre

The AHA Centre, GRAHA BNPB 13th floor,
Jl. Raya Pramuka Kav. 38, East Jakarta 13120 Indonesia

SOURCES

ASEAN Disaster Monitoring & Response System (DMRS);
ASEAN Specialised Meteorological Centre (ASMC); Joint
Typhoon Warning Centre (JTWC)

Indonesia: BNPB, BMKG, PVMBG;
Philippines: DSWD, NDRRMC, PHIVOLCS;
Viet Nam: VNDMA

Various news agencies

DISCLAIMER

The AHA Centre was established in November 2011 by the
Association of Southeast Asian Nations (ASEAN) Member
States to facilitate cooperation and coordination among
Member States, relevant agencies of the United Nations
and international organisations in disaster management and
emergency response.

This update consists of significant natural disaster events
that occurred in ASEAN Member States – Brunei
Darussalam, Cambodia, Indonesia, Lao PDR, Malaysia,
Myanmar, Philippines, Singapore, Thailand, and Viet Nam.
The disasters recorded include Drought, Flood, Earthquake,
Tsunami, Volcano, Wind, Landslide, and Storm.

The use of boundaries, geographic names, related
information, and potential considerations for response are
for reference, not warranted to be error-free or implying
official endorsement from ASEAN Member States.

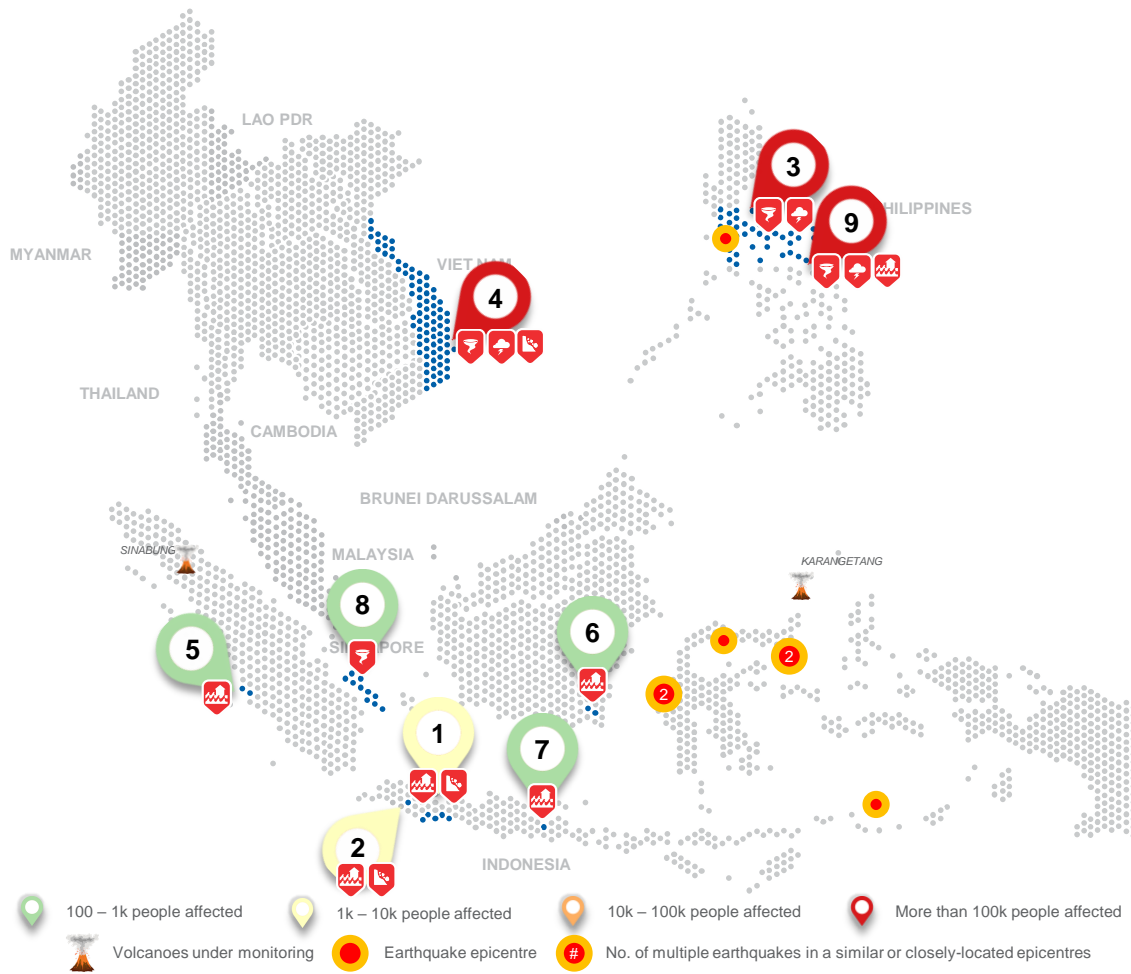
© 2020 AHA Centre.
All rights reserved.

For inquiries, comments, and/or suggestions,
you may reach us through dma@ahacentre.org



You are receiving this email because you are
registered in our distribution list.

SCAN TO SUBSCRIBE



REGIONAL TALLY



Note: Estimations are based on data reported/confirmed by National
Disaster Management Organisations of each respective ASEAN
Member State and other verified sources

01 Indonesia, Flooding in Cilacap and Banyumas, and Flooding and Landslide in Kebumen, Central Java

26, 29, 30 Oct 2020 | More details at: [ADinet Report 1895](#), [1901](#), [1903](#)

02 Indonesia, Flooding in Cimahi and Ciamis, and Flooding and Landslide in Pangandaran, West Java

26, 27, 27 Oct 2020 | More details at: [ADinet Report 1896](#), [1897](#), [1898](#)

03 Philippines, Winds and Storms in Multiple Regions (TY MOLAVE)

29 Oct 2020 | More details at: [ADinet Report 1897](#)

04 Viet Nam, Winds, Storms and Landslides in Central Regions (TY MOLAVE)

29 Oct 2020 | More details at: [ADinet Report 1902](#)

05 Indonesia, Flooding in Pesisir Selatan, West Sumatera

30 Oct 2020 | More details at: [ADinet Report 1905](#)

06 Indonesia, Flooding in Tapin, South Kalimantan

31 Oct 2020 | More details at: [ADinet Report 1904](#)

07 Indonesia, Flooding in Probolinggo, East Java

31 Oct 2020 | More details at: [ADinet Report 1907](#)

08 Indonesia, Strong Winds in Bangka, Bangka Belitung

31 Oct 2020 | More details at: [ADinet Report 1906](#)

09 Philippines, Flooding, Storms, and Winds in CAR, CALABARZON and MIMAROPA (STY GONI)

01 Nov 2020 | More details at: [ADinet Report 1908](#)

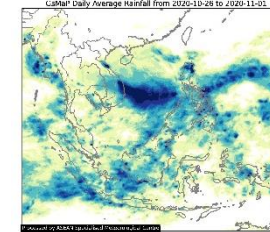
REGIONAL SUMMARY:

Flooding due to heavy rainfall as well as strong winds reportedly affected different parts of Indonesia according to the Badan Nasional Penanggulangan Bencana ([BNPB](#)). In the Philippines, due to the effects of Typhoon MOLAVE and Super Typhoon GONI, widespread displacement of people, infrastructural and agricultural damages have been reported by the National Disaster Risk Reduction Management Council ([NDRRMC](#)) and the Department of Social Welfare and Development ([DSWD](#)). Lastly, according to reports from the Viet Nam Disaster Management Authority ([VNDMA](#)), Typhoon MOLAVE has triggered a landslide burying several people.

HIGHLIGHT:

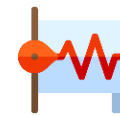
Due to the effects of Typhoon MOLAVE (locally named “Quinta”), 776K people (177K families) have been affected according to the report from the [DSWD](#). The [DSWD](#) also reported 22 deaths, 4 missing, and 39 injured people and 487K displaced into 279 evacuation centres. 53K houses, and 15M USD worth of damages (agricultural and infrastructural) have been reported by the [DSWD](#). Local authorities continue to closely coordinate with the concerned field offices for updates on the situation, assistance, and relief efforts. Assistance was provided to the affected families by the [DSWD](#) and the local government units. The Philippines was also struck by Super Typhoon GONI on November 1 prompting the AHA Centre to make an offer of assistance to augment the state’s response capacity.

HYDRO-METEO-CLIMATOLOGICAL:



Data from the ASEAN Specialised Meteorological Centre ([ASMC](#)) shows high daily average rainfall in the Philippine Sea, West Philippine Sea, and central Viet Nam. This is most likely associated to the development of Typhoon MOLAVE that traversed Southern Luzon of the Philippines before dissipating in mainland Southeast Asia.

GEOPHYSICAL:



Seven (7) significant earthquakes ($M \geq 5.0$) were recorded in the region by Indonesia’s Badan Meteorologi Klimatologi dan Geofisika ([BMKG](#)) and the Philippine Institute for Volcanology and Seismology ([PHIVOLCS](#)). Mount Sinabung (which reported recent volcanic activity) and Karangetang in Indonesia, both on Alert Level III, are under close monitoring. Lastly, Semeru, and Dukono, in Indonesia remain on Alert Level II despite recent volcanic activity per [PVMBG](#).

OUTLOOK:



The [ASMC](#) forecasts drier conditions in the western Maritime continent and southern Mainland Southeast Asia. Wetter conditions are forecast over northern Myanmar and northern Philippines (but depends on tropical cyclone development). There is a moderate increase in chance of a very heavy rainfall event occurring in northern Myanmar and northern Philippines; and a moderate increase in chance for extreme hot conditions in Northern Sumatra and parts of eastern Myanmar.