



ONE ASEAN
ONE RESPONSE

WEEKLY DISASTER UPDATE

Week 48
23 - 29 Nov 2020

- ahacentre.org
- ahacentre
- @ahacentre
- @ahacentre

The AHA Centre, GRAHA BNPB 13th floor,
Jl. Raya Pramuka Kav. 38, East Jakarta 13120 Indonesia

SOURCES

ASEAN Disaster Monitoring & Response System (DMRS);
ASEAN Specialised Meteorological Centre (ASMC); Joint
Typhoon Warning Centre (JTWC)

Indonesia: BNPB, BMKG, PVMBG;
Malaysia: NADMA;
Philippines: DSWD;
Thailand: DDPM

Various news agencies

DISCLAIMER

The AHA Centre was established in November 2011 by the
Association of Southeast Asian Nations (ASEAN) Member
States to facilitate cooperation and coordination among
Member States, relevant agencies of the United Nations
and international organisations in disaster management and
emergency response.

This update consists of significant natural disaster events
that occurred in ASEAN Member States – Brunei
Darussalam, Cambodia, Indonesia, Lao PDR, Malaysia,
Myanmar, Philippines, Singapore, Thailand, and Viet Nam.
The disasters recorded include Drought, Flood, Earthquake,
Tsunami, Volcano, Wind, Landslide, and Storm.

The use of boundaries, geographic names, related
information, and potential considerations for response are
for references, not warranted to be error-free or implying
official endorsement from ASEAN Member States.

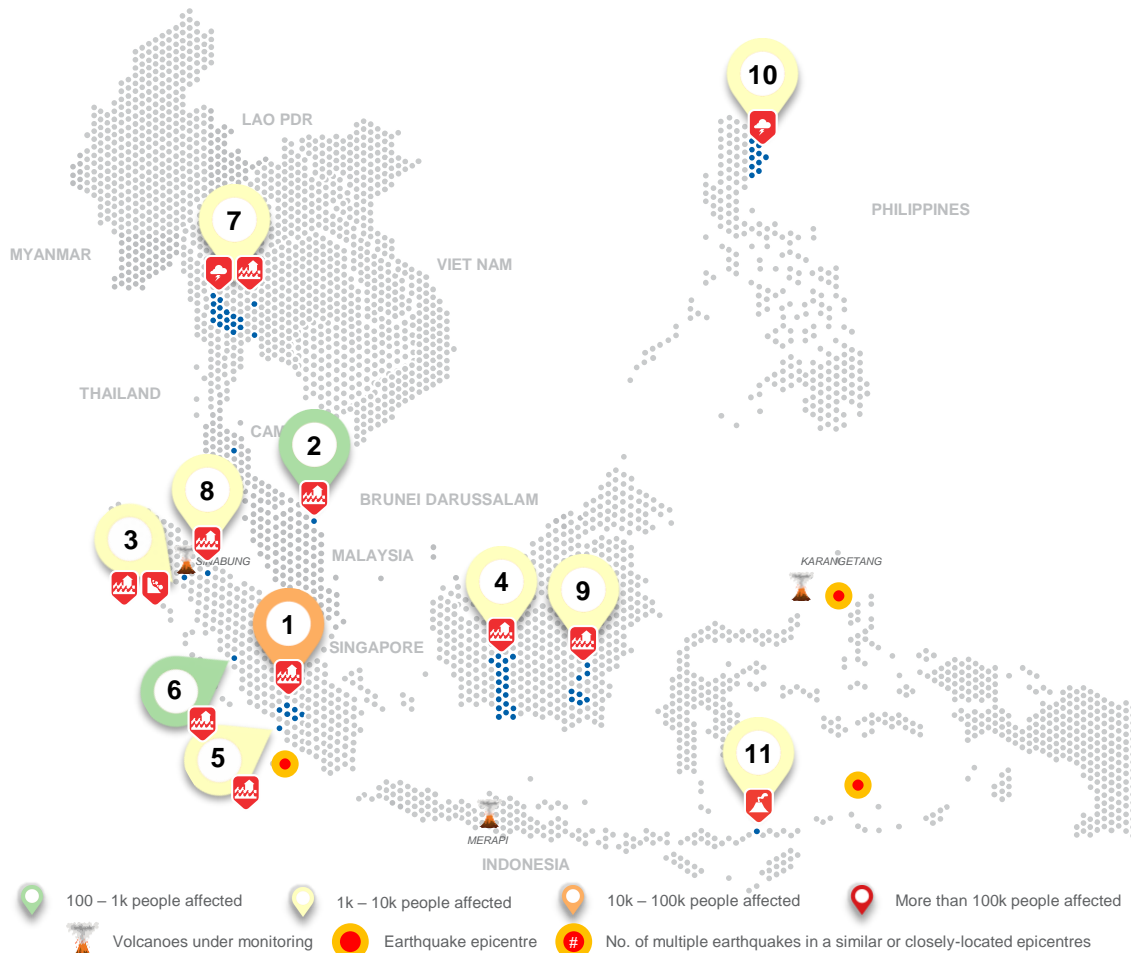
© 2020 AHA Centre.
All rights reserved.

For inquiries, comments, and/or suggestions,
you may reach us through dma@ahacentre.org



You are receiving this email because you are
registered in our distribution list.

SCAN TO SUBSCRIBE



REGIONAL TALLY



Note: Estimations are based on data reported/confirmed by National
Disaster Management Organisations of each respective ASEAN
Member State and other verified sources

01 Indonesia, Flooding in Jambi

23 Nov 2020 | More details at: [ADinet Report 1946](#) [1944](#)

02 Malaysia, Flooding in Terangganu

23 Nov 2020 | More details at: [ADinet Report 1949](#)

03 Indonesia, Flooding and Landslide in Subulussalam City

23 Nov 2020 | More details at: [ADinet Report 1947](#)

04 Indonesia, Flooding in Seruyan, Central Kalimantan

23 Nov 2020 | More details at: [ADinet Report 1941](#)

05 Indonesia, Flooding in Bengkulu City, Bengkulu

23 Nov 2020 | More details at: [ADinet Report 1942](#)

06 Indonesia, Flooding in Padang Pariaman, West Sumatra

24 Nov 2020 | More details at: [ADinet Report 1943](#)

07 Thailand, Floods and Storms in 6 Provinces

26 Nov 2020 | More details at: [ADinet Report 1950](#)

08 Indonesia, Flooding in Tebing Tinggi, North Sumatra

27 Nov 2020 | More details at: [ADinet Report 1951](#)

09 Indonesia, Flooding in South Borneo

27, 28 Nov 2020 | More details at: [ADinet Report 1952](#) [1953](#)

10 Philippines, Storms in Region II

28 Nov 2020 | More details at: [ADinet Report 1955](#)

11 Indonesia, Ili Lewotolok Eruption in East Nusa Tenggara

30 Nov 2020 | More details at: [ADinet Report 1954](#)

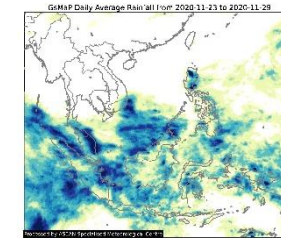
REGIONAL SUMMARY:

Several localised flooding events, a landslide, and a volcano eruption were reported by the Badan Nasional Penanggulangan Bencana ([BNPB](#)) in different parts of Indonesia. Flooding was also reported in Terangganu in Malaysia where some citizens have taken shelter in evacuation centres as reported by The National Disaster Management Agency ([NADMA](#)). Thailand's Department of Disaster Prevention and Mitigation ([DDPM](#)) also reported flooding and storms in six provinces. Lastly, the Philippines' Department of Social Welfare and Development ([DSWD](#)) reported that a tail-end of a frontal system affected Region II.

HIGHLIGHT:

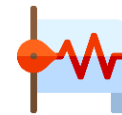
According to Indonesia's Pusat Vulkanologi dan Mitigasi Bencana Geologi ([PVMBG](#)), Mt. Ili Lewotolok erupted on 29 November 2020 with the eruption column observed to be about 4 km above the peak (5.4 km above sea level). The ash column was observed to be gray with thick intensity towards the east and west. The eruption was recorded on a seismograph with a maximum amplitude of 35 mm and a duration of 600 seconds. The eruption displaced about 4.5K people in the nearby areas. Urgent needs identified by the local authorities are face masks and shelter for those displaced. The Alert Level for Mt. Ili Lewotolok was raised to Level III (Siaga).

HYDRO-METEO-CLIMATOLOGICAL:



For the past week, data from the ASEAN Specialised Meteorological Centre ([ASMC](#)) showed specks of high 7-day average rainfall particularly in Peninsular Malaysia, Sumatra and other parts of Indonesia and northern Philippines. As of reporting, the [JTWC](#) has issued tropical cyclone advisories for INVEST 98S and 95S in the Indian Ocean but both are moving away from the region (westward).

GEOPHYSICAL:



Three (3) significant earthquakes ($M \geq 5.0$) were recorded in the region by Indonesia's Badan Meteorologi Klimatologi dan Geofisika ([BMKG](#)). Mount Sinabung and Ili Lewotolo (both of which reported recent volcanic activity), Merapi, and Karangetang in Indonesia, all on Alert Level III, are under close monitoring. Lastly, Ibu, Dukono, and Semeru all in Indonesia remain on Alert Level II despite recent volcanic activity per [PVMBG](#).

OUTLOOK:



For the coming week, the [ASMC](#) forecasts wetter conditions for northern parts of the region, central and southern Viet Nam, southern Thailand, and northern Philippines and the southeastern maritime continent; drier conditions for parts of the equatorial region; cooler in eastern mainland Southeast Asia; and warmer in Central Sumatra and Borneo. Based on the regional assessment of extremes there are moderate increases in chance for a heavy rainfall event (northern Philippines, central Viet Nam, southern Thailand, southern Indonesia, Papua Island), extended dry conditions (equatorial region), and extreme hot conditions (central Myanmar and equatorial region) in the region.