



ONE ASEAN
ONE RESPONSE

WEEKLY DISASTER UPDATE

Week 50
07 -13 Dec 2020

- ahacentre.org
- ahacentre
- @ahacentre
- @ahacentre

The AHA Centre, GRAHA BNPB 13th floor,
Jl. Raya Pramuka Kav. 38, East Jakarta 13120 Indonesia

SOURCES

ASEAN Disaster Monitoring & Response System (DMRS);
ASEAN Specialised Meteorological Centre (ASMC); Joint
Typhoon Warning Centre (JTWC)

Indonesia: BNPB, BMKG, PVMBG;

Various news agencies

DISCLAIMER

The AHA Centre was established in November 2011 by the
Association of Southeast Asian Nations (ASEAN) Member
States to facilitate cooperation and coordination among
Member States, relevant agencies of the United Nations
and international organisations in disaster management and
emergency response.

This update consists of significant natural disaster events
that occurred in ASEAN Member States – Brunei
Darussalam, Cambodia, Indonesia, Lao PDR, Malaysia,
Myanmar, Philippines, Singapore, Thailand, and Viet Nam.
The disasters recorded include Drought, Flood, Earthquake,
Tsunami, Volcano, Wind, Landslide, and Storm.

The use of boundaries, geographic names, related
information, and potential considerations for response are
for reference, not warranted to be error-free or implying
official endorsement from ASEAN Member States.

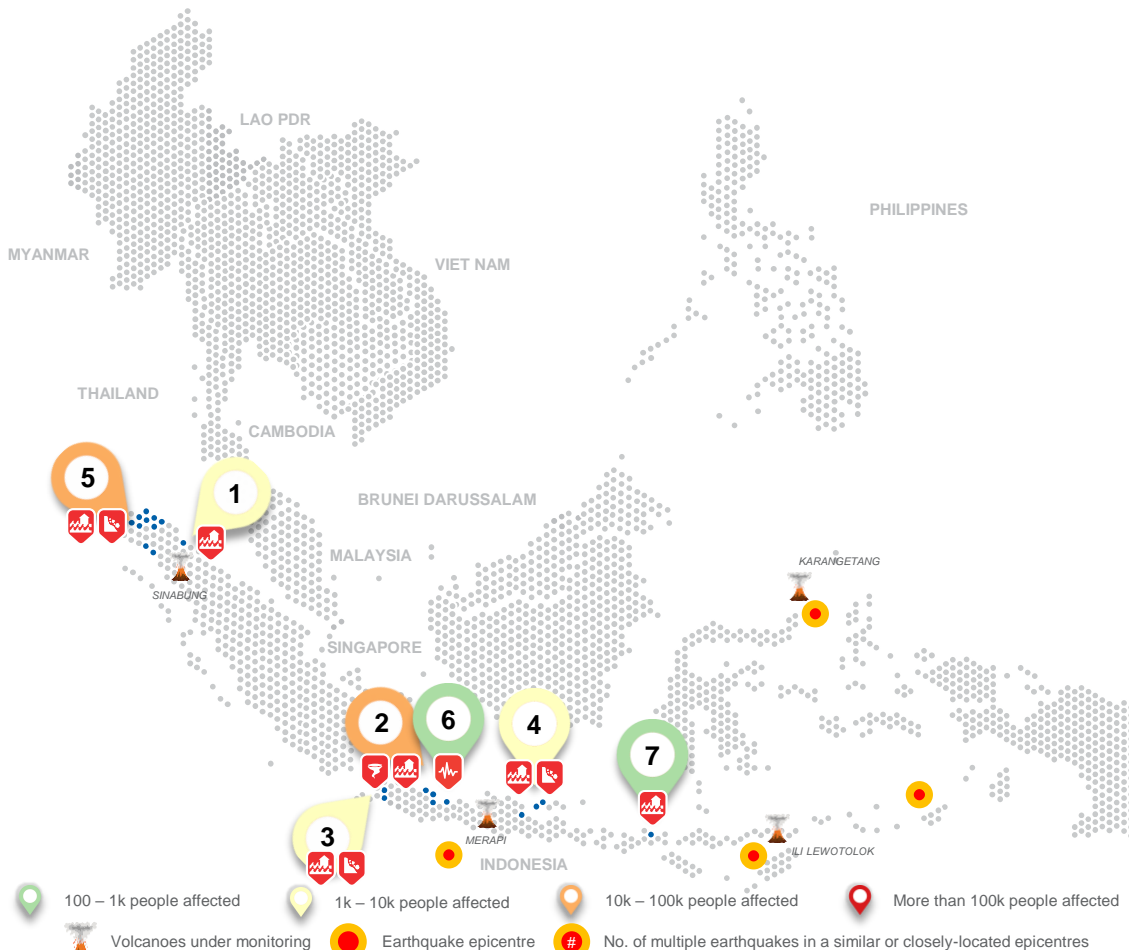
© 2020 AHA Centre.
All rights reserved.

For inquiries, comments, and/or suggestions,
you may reach us through dma@ahacentre.org



You are receiving this email because you are
registered in our distribution list.

SCAN TO SUBSCRIBE



REGIONAL TALLY



Note: Estimations are based on data reported/confirmed by National
Disaster Management Organisations of each respective ASEAN
Member State and other verified sources

01 Indonesia, Flooding in Deli Serdang, North Sumatera
07 Dec 2020 | More details at: [ADinet Report 1973](#)

02 Indonesia, Whirlwind in Cirebon and Flooding in Indramayu, West Java
07, 10 Dec 2020 | More details at: [ADinet Report 1974 1985](#)

03 Indonesia, Flooding and Landslide in Lebak and Flooding in Pandeglang and Serang, Banten
07, 08, 08 Dec 2020 | More details at: [ADinet Report 1975 1978 1979](#)

04 Indonesia, Flooding in Bangkalan, Sampang, Sidoarjo and Flooding and Landslide in Pasuruan, East Java
09, 09, 10, 12 Dec 2020 | More details at: [ADinet Report 1993 1990 1986 1996](#)

05 Indonesia, Flooding in Lhokseumawe City, South Aceh, East Aceh, and Flooding and Landslide in North Aceh, Aceh
10 Dec 2020 | More details at: [ADinet Report 1982 1991 1987 1984](#)

06 Indonesia, Earthquake in Brebes, Central Java
11 Dec 2020 | More details at: [ADinet Report 1998](#)

07 Indonesia, Flooding in Dompus, West Nusa Tenggara
13 Dec 2020 | More details at: [ADinet Report 1995](#)

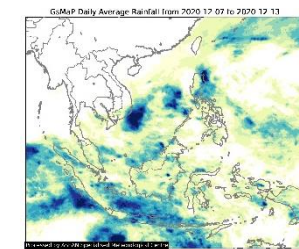
REGIONAL SUMMARY:

A total of 16 disasters (1 earthquake, 11 floods, 1 wind, 3 landslides) affected the region in week 50. All these disasters occurred in Indonesia as reported by the Badan Nasional Penanggulangan Bencana ([BNPB](#)). High intensity rain which also caused the overflowing of rivers caused the floods in multiple provinces of the member state. Meanwhile, unstable soil conditions on top of moderate to high intensity rain induced landslides in Aceh Province. Lastly, a Magnitude 4.2 earthquake that occurred in Brebes, Central Java caused minor damages.

HIGHLIGHT:

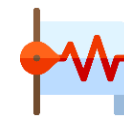
According to Indonesia's [BNPB](#), flooding and landslide has affected 23 sub-districts of North Aceh in the province of Aceh. From 5 December 2020, heavy rain caused the Krueng Jumbo river to overflow into the areas of North Aceh and Bener Meriah Districts and has caused an injury, affected 19.1K families (60.7K persons) evacuated into 170 points. Approximately 18.2K residential houses have sustained damages and since of last reporting, river water discharge has already decreased and the main access road—Medan Badan Aceh Road is already passable. Flood waters also reportedly have receded.

HYDRO-METEO-CLIMATOLOGICAL:



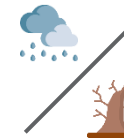
For the past week, data from the ASEAN Specialised Meteorological Centre ([ASMC](#)) showed high 7-day average rainfall over most parts of as well as the peripheries of Indonesia, northern Philippines, Viet Nam's East Sea, and the West Philippine Sea. As of reporting, no tropical cyclone advisory has been issued by the [JTWC](#).

GEOPHYSICAL:



Four (4) significant earthquakes (M≥5.0) were recorded in the region by Indonesia's Badan Meteorologi Klimatologi dan Geofisika ([BMKG](#)). Mount Ili Lewotolo and Sinabung both of which reported recent volcanic activity and Merapi, and Karangetang in Indonesia, all on Alert Level III, are under close monitoring. Lastly, Ibu, Dukono, and Semeru all in Indonesia remain on Alert Level II despite recent volcanic activity per [PVMBG](#).

OUTLOOK:



For the coming week, the [ASMC](#) forecasts wetter conditions for the Philippines, central and southern Viet Nam, southern Thailand, southern Myanmar, and the southeastern Maritime continent; drier conditions for parts of the equatorial region; and cooler conditions for southern parts of Indonesia. For the regional assessment of extremes there is a moderate increase in chance for a very heavy rainfall event to occur in the Philippines, central and southern Viet Nam, southern Thailand, southern Myanmar, and southeastern parts of the maritime continent and for extreme hot conditions in Myanmar.