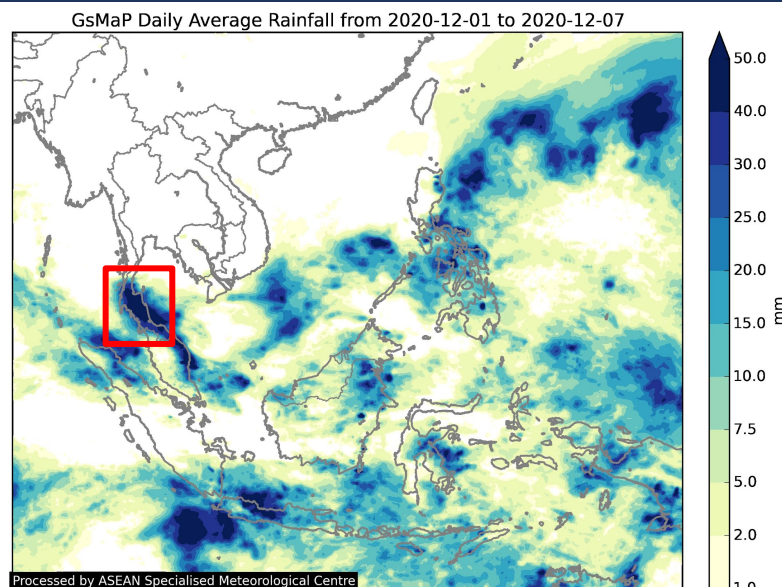





Prime Minister Prayut Chan-o-cha stands in a flat-bottomed boat before departing to give out relief bags and survival kits to flood victims stranded in their houses in tambon Mae Chao Yu Hua of Chian Yai district in Nakhon Si Thammarat on Monday. Photo credits goes to [The Bangkok Post](#).



KEY FIGURES

Note: Figures are as reported by Thailand's Department of Disaster Prevention and Mitigation as of 07 December 2020

 **2.75M**
ESTIMATED POPULATION
AFFECTED

 **900**
DISPLACED
PERSONS

 **29**
DEAD

 **555K**
DAMAGED HOUSES

 **8.47M**
LIVESTOCK LOST

 **41.4K**
FISHERIES DAMAGED

 **400K**
PADDY AND OTHER CROPS
FIELD DAMAGED

Thailand

- According to the Thailand's Department of Disaster Prevention and Mitigation ([DDPM](#)), due to the influence of the Northeast Monsoon that prevailed over the the Gulf of Thailand and the Southern regions with patches of low pressure (also covering Malaysia) heavy to very heavy rains affected the southern regions of Thailand from 25 November to 06 December 2020.
- As of 08 December 2020, a total of **4,130 villages in 560 sub-districts in 101 districts from 11 provinces** have been affected according to the report from [DDPM](#). The following provinces have already been extricated from the situation: Krabi, Chumphon, Satun, Pattani, Yala, and Narathiwat. Currently, there are still five provinces affected by the flooding: Nakorn Si Thammarat, Surat Thani, Trang, Phatthalung, and Songkhla.
- The flooding reportedly resulted in **29 deaths**, and the **displacement of 900 people**. Reported damages amounted to **555,194 houses**, **8,470,587 livestock**, **41,423 fisheries**, and **399,959 paddy and other crop fields**.
- According to [DDPM](#), the flood situation is currently under medium disaster management (level 2). The [DDPM](#) is continuously monitoring, assessing, and analysing the situation and if the damages tend to be more severe and widespread then the DDPM will propose to raise it to the National Disaster Prevention and Mitigation Command.
- The AHA Centre will continue to monitor for further developments and issue necessary updates as additional information becomes available by official sources.

DATA SOURCES

ASEAN Disaster Monitoring & Response System (DMRS); Pacific Disaster Center (PDC Global);

Thailand: DDPM

DISCLAIMER

The AHA Centre was established in November 2011 by the Association of Southeast Asian Nations (ASEAN) Member States to facilitate cooperation and coordination among the Member States, relevant agencies of the United Nations, and international organisations in disaster management and humanitarian assistance.

The use of boundaries, geographic names, related information and potential considerations for response are for reference, not warranted to be error free or implying official endorsement from ASEAN Member States.

© 2020 AHA Centre.
All rights reserved.
You are receiving this email
because you are registered in
our distribution list.

Our mailing address is:
AHA Centre,
GRAHA BNPB 13th Floor,
Jl. Raya Pramuka Kav. 38,
Jakarta 13120 Indonesia