



ONE ASEAN
ONE RESPONSE

WEEKLY DISASTER UPDATE

Week 6
8 – 14 Feb 2021

- ahacentre.org
- ahacentre
- @ahacentre
- @ahacentre

The AHA Centre, GRAHA BNPB 13th floor,
Jl. Raya Pramuka Kav. 38, East Jakarta 13120 Indonesia

SOURCES

ASEAN Disaster Monitoring & Response System (DMRS);
ASEAN Specialised Meteorological Centre (ASMC); Joint
Typhoon Warning Centre (JTWC)

Indonesia: BNPB, BMKG, PVMBG;
Philippines: DSWD, PHIVOLCS;

Various news agencies

DISCLAIMER

The AHA Centre was established in November 2011 by the
Association of Southeast Asian Nations (ASEAN) Member
States to facilitate cooperation and coordination among
Member States, relevant agencies of the United Nations
and international organisations in disaster management and
emergency response.

This update consists of significant natural disaster events
that occurred in ASEAN Member States – Brunei
Darussalam, Cambodia, Indonesia, Lao PDR, Malaysia,
Myanmar, Philippines, Singapore, Thailand, and Viet Nam.
The disasters recorded include Drought, Flood, Earthquake,
Tsunami, Volcano, Wind, Landslide, and Storm.

The use of boundaries, geographic names, related
information, and potential considerations for response are
for references, not warranted to be error-free or implying
official endorsement from ASEAN Member States.

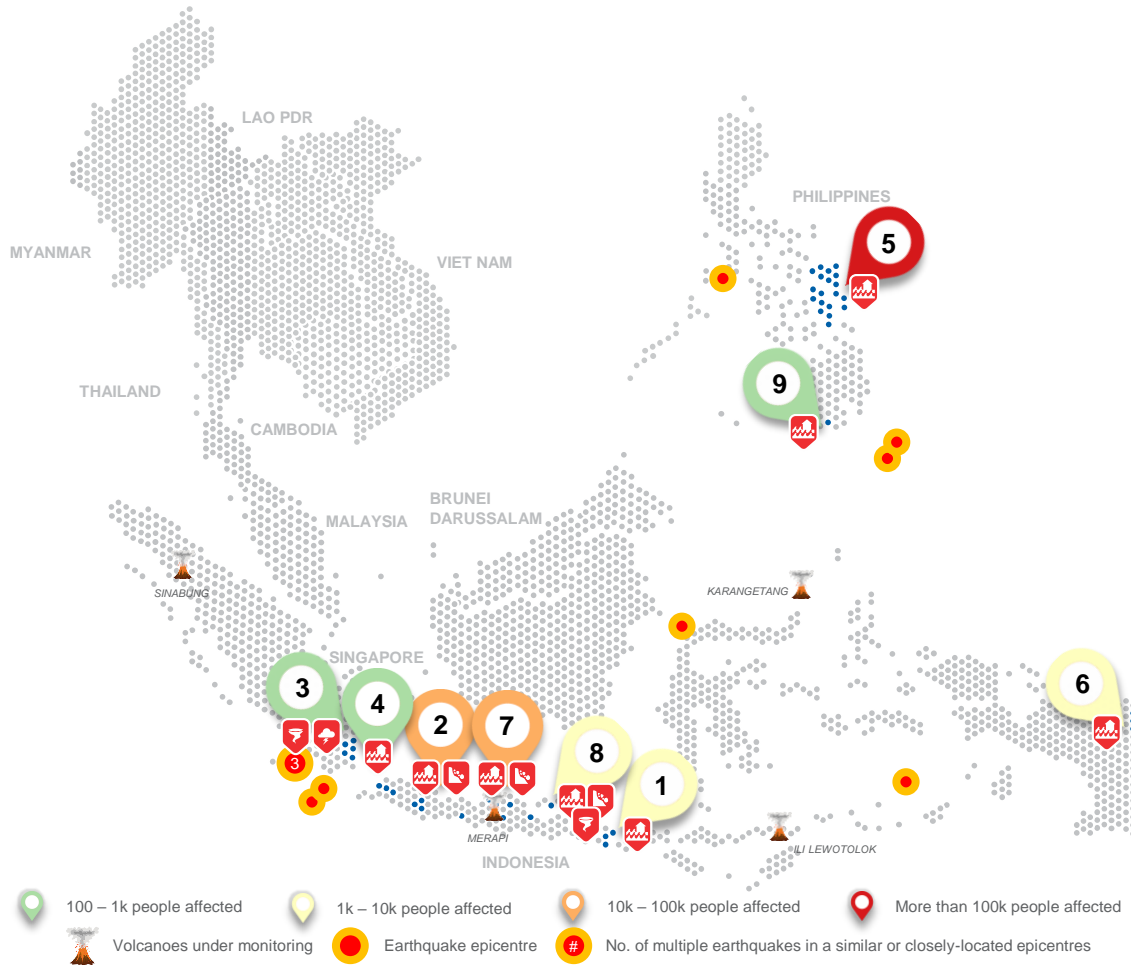
© 2021 AHA Centre.
All rights reserved.

For inquiries, comments, and/or suggestions,
you may reach us through dma@ahacentre.org

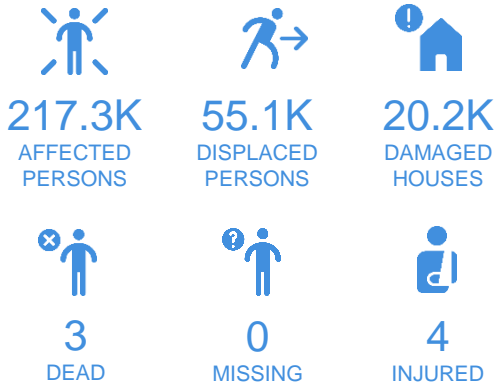


You are receiving this email because you are
registered in our distribution list.

SCAN TO SUBSCRIBE



REGIONAL TALLY



Note: Estimations are based on data reported/confirmed by National
Disaster Management Organisations of each respective ASEAN
Member State and other verified sources

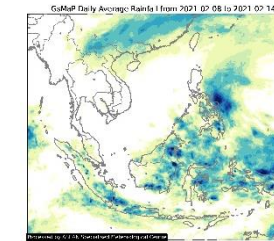
REGIONAL SUMMARY:

A total of 21 disasters (15 floods, 3 landslides, 2 wind-related, 1 storm) affected the region in the sixth week of 2021. Indonesia and the Philippines have reportedly been affected. As forecasted by the ASEAN Specialised Meteorological Centre ([ASMC](#)) wetter conditions were to be observed mostly in Java, Indonesia and the Philippines. Accordingly, localised heavy rainfall and flooding events and landslides have been reported by Indonesia's Badan Nasional Penanggulangan Bencana ([BNPB](#)) and the Philippines' Department of Social Welfare and Development ([DSWD](#)).

HIGHLIGHT:

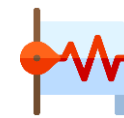
According to the report from the [DSWD](#), the Tail-end of a Frontal System (TEFS) affected the Eastern Visayas bringing cloudy skies, scattered rainshowers, and thunderstorms. Due to prolonged periods of rainfall brought by these weather disturbances, flooding occurred in areas that are highly or very highly susceptible to these hazards. The flooding has claimed one life and affected a total of 25.2K families (120.1K persons) in 114 barangays in Eastern Visayas. A total of 35.5K persons took temporary shelter in eight (8) evacuation centres. 15 houses have been damaged. Around 6.8K USD worth of assistance have been provided to those affected. The local agencies are coordinating with the respective government units regarding updates on status of the affected persons and the relief efforts.

HYDRO-METEO-CLIMATOLOGICAL:



For the past week, data from the ASEAN Specialised Meteorological Centre ([ASMC](#)) showed high 7-day average rainfall over the Eastern Visayas Region of the Philippines and parts of Indonesia. As of reporting, a tropical disturbance (INVEST 91W) has been reported by [JTWC](#) 400 km southeast of Yap, Micronesia and is under close monitoring for its Medium potential to develop into a significant tropical cyclone in 24 hours.

GEOPHYSICAL:



Ten (10) significant earthquakes (M≥5.0) were recorded in the region by Indonesia's Badan Meteorologi Klimatologi dan Geofisika ([BMKG](#)) and the Philippine Institute for Volcanology and Seismology ([PHIVOLCS](#)). Mt. Sinabung in Indonesia reported recent volcanic activity, is on Alert Level III and is under close monitoring. Lastly, Ibu, Raung, and Dukono in Indonesia remain on Alert Level II despite recent volcanic activity per [PVMBG](#).

OUTLOOK:



For the coming week, the [ASMC](#) forecasts wetter conditions over the Philippines and northern Borneo; drier conditions over the Malay Peninsula and western Borneo. For the regional assessment of extremes, there is a small increase in chance for: a very heavy rainfall event to occur in Central and Southern Philippines; extended dry conditions in Malay Peninsula, Riau Archipelago, Western Borneo; extreme hot conditions in Western Borneo, southern Philippines, and Northern parts of Sulawesi and Maluku Islands; and extreme cold conditions in Cambodia and southern Viet Nam.