



ONE ASEAN
ONE RESPONSE

WEEKLY DISASTER UPDATE

Week 15
12 - 18 Apr 2021

- ahacentre.org
- ahacentre
- @ahacentre
- @ahacentre

The AHA Centre, GRAHA BNPB 13th floor,
Jl. Raya Pramuka Kav. 38, East Jakarta 13120 Indonesia

SOURCES

ASEAN Disaster Monitoring & Response System (DMRS);
ASEAN Specialised Meteorological Centre (ASMC); Joint
Typhoon Warning Centre (JTWC)

Indonesia: BNPB, BMKG, PVMBG;
Philippines: PAGASA, PHIVOLCS;
Viet Nam: VNDMA

Various news agencies

DISCLAIMER

The AHA Centre was established in November 2011 by the
Association of Southeast Asian Nations (ASEAN) Member
States to facilitate cooperation and coordination among
Member States, relevant agencies of the United Nations
and international organisations in disaster management and
emergency response.

This update consists of significant natural disaster events that
occurred in ASEAN Member States – Brunei
Darussalam, Cambodia, Indonesia, Lao PDR, Malaysia,
Myanmar, Philippines, Singapore, Thailand, and Viet Nam.
The disasters recorded include Drought, Flood, Earthquake,
Tsunami, Volcano, Wind, Landslide, and Storm.

The use of boundaries, geographic names, related
information, and potential considerations for response are
for references, not warranted to be error-free or implying
official endorsement from ASEAN Member States.

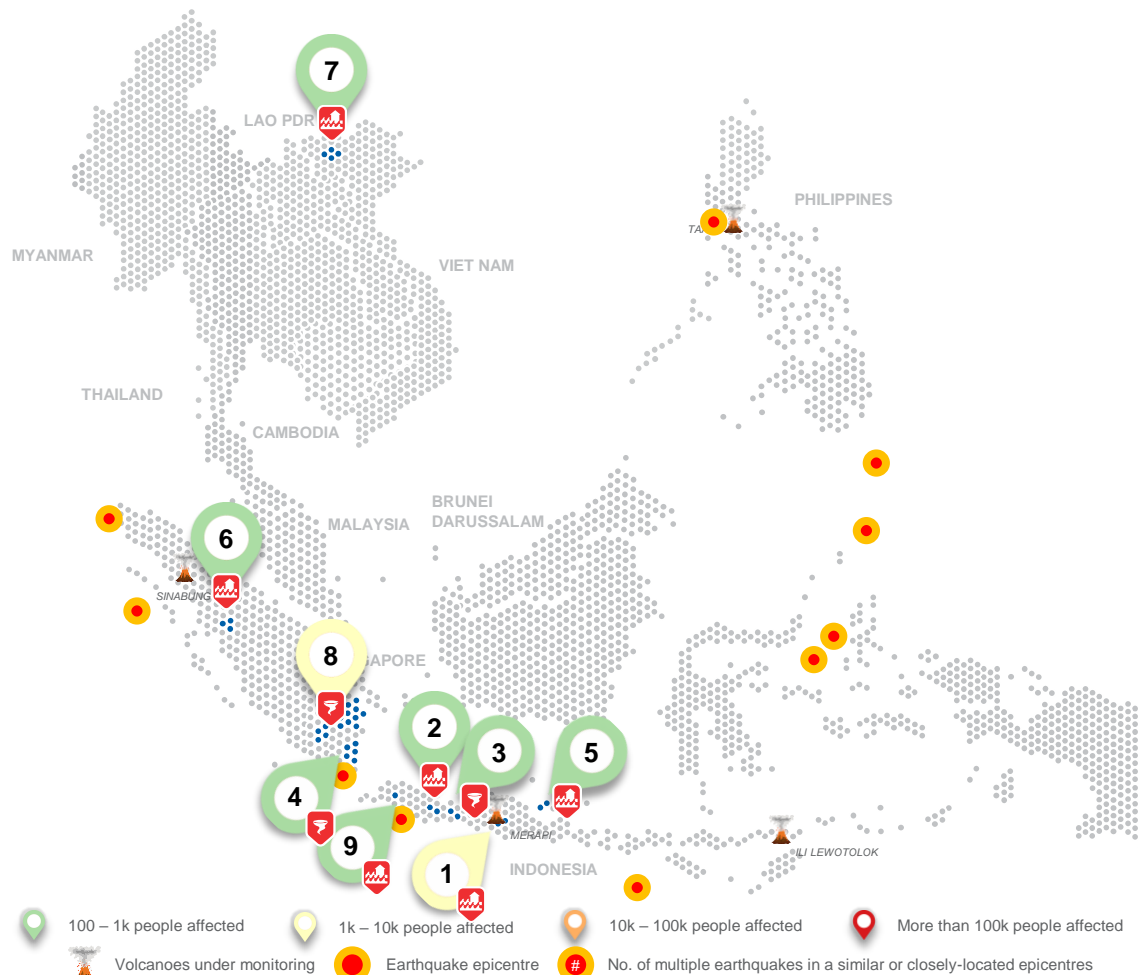
© 2021 AHA Centre.
All rights reserved.

For inquiries, comments, and/or suggestions,
you may reach us through dmsa@ahacentre.org



You are receiving this email because you are
registered in our distribution list.

SCAN TO SUBSCRIBE



100 – 1k people affected

1k – 10k people affected

10k – 100k people affected

More than 100k people affected



Volcanoes under monitoring



Earthquake epicentre



No. of multiple earthquakes in a similar or closely-located epicentres

REGIONAL TALLY



7.9K
AFFECTED
PERSONS



65
DISPLACED
PERSONS



1.4K
DAMAGED
HOUSES



3
DEAD



0
MISSING



0
INJURED

01 Indonesia, [Flooding in Madiun and Magetan Regency \(East Java\)](#)
14, 15 Apr 2021

02 Indonesia, [Flooding in Ciamis Regency \(West Java\)](#)
14 Apr 2021

03 Indonesia, [Whirlwind in Cilacap Regency \(Central Java\)](#)
15 Apr 2021

04 Indonesia, [Whirlwind in Lampung Timur \(Lampung\)](#)
15 Apr 2021

05 Indonesia, [Flooding in Bangkalan Regency \(East Java\)](#)
15 Apr 2021

06 Indonesia, [Flooding in Rokan Hulu Regency \(Riau\)](#)
17 Apr 2021

07 Viet Nam, [Flash Floods in Văn Bàn District \(Lào Cai\)](#)
17 Apr 2021

08 Indonesia, [Strong Winds in Ogan Komering Ulu and Ogan Ilir \(South Sumatra\)](#)
17 Apr 2021

09 Indonesia, [Flooding in Bogor Regency \(West Java\)](#)
14 Apr 2021

Note: Estimations are based on data reported/confirmed by National
Disaster Management Organisations of each respective ASEAN
Member State and other verified sources

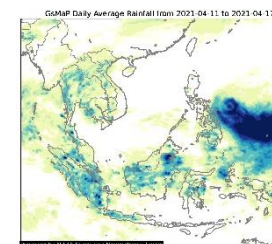
REGIONAL SUMMARY:

A total of 11 disasters (7 floods and 4 wind-related) affected the region in the fifteenth week of 2021. Indonesia and Viet Nam have reportedly been affected. Several localised heavy rainfall (some accompanied by strong winds) which triggered flooding events and the overflowing of rivers have been reported by Indonesia's Badan Nasional Penanggulangan Bencana ([BNPB](#)). The Viet Nam Disaster Management Authority ([VNDMA](#)) reported that heavy rainfall caused flooding in Lao Cai resulting in three casualties.

HIGHLIGHT:

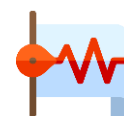
According to the reports from the [BNPB](#), heavy rain on 14 Apr which was gradually accompanied by surface run-off from Mount Willis and the confluence of Kelok and Ganda rivers caused flooding of at most 120 cm in Madiun Regency, East Java. The floods reportedly affected 597 families (2,985 persons), and damaged 96 houses. The regional disaster management agency of Madiun headed to the location to conduct monitoring and assessment. Coordination with local government and relevant authorities was also conducted.

HYDRO-METEO-CLIMATOLOGICAL:



For the past week, data from the ASEAN Specialised Meteorological Centre ([ASMC](#)) showed high 7-day average rainfall over the Philippine Sea associated with the development of TYPHOON SURIGAE (Bising). As of reporting, SURIGAE is located 235 km E-NE of Virac, Catanduanes moving N-NW with maximum sustained winds of 195 km/h. The typhoon is forecast to gradually weaken from its current intensity throughout the remainder of the forecast period. Tropical Cyclone Wind Signal No. 2 is raised over the Bicol and Eastern Visayas Regions. Heavy rainfall and flooding and rain-induced should be expected in the aforementioned areas according to the Philippine Atmospheric Geophysical and Astronomical Services Administration (PAGASA)

GEOPHYSICAL:



Ten (10) significant earthquakes ($M \geq 5.0$) were recorded in the region by Indonesia's Badan Meteorologi Klimatologi dan Geofisika ([BMKG](#)) and the Philippine Institute of Volcanology and Seismology ([PHIVOLCS](#)). Mt. Sinabung (Alert Level III) in Indonesia and Taal volcano in the Philippines (Alert Level 2) reported recent volcanic activity and is under close monitoring. Lastly, Semeru, Raung, and Ili Lewotolo in Indonesia remain on Alert Level II despite recent volcanic activity per [PVMBG](#).

OUTLOOK:



For the coming week, the [ASMC](#) forecasts wetter conditions for mainland Southeast Asia and northern and central Philippines (associated with tropical cyclone development); drier conditions for southern ASEAN region; cooler temperatures for central and southeastern mainland Southeast Asia and northern and central Philippines. For the regional assessment of extremes, there is a moderate increase in chance for a very heavy rainfall event in northern and central Philippines; moderate chance for dry conditions in Sumatra, Western Java, Borneo, and Sulawesi; and moderate chance for extreme cold conditions in southern Myanmar, parts of Thailand, Cambodia, and northern and central Philippines.