



ONE ASEAN
ONE RESPONSE

WEEKLY DISASTER UPDATE

Week 16
19 – 25 Apr 2021

- ahacentre.org
- ahacentre
- @ahacentre
- @ahacentre

The AHA Centre, GRAHA BNPB 13th floor,
Jl. Raya Pramuka Kav. 38, East Jakarta 13120 Indonesia

SOURCES

ASEAN Disaster Monitoring & Response System (DMRS);
ASEAN Specialised Meteorological Centre (ASMC); Joint
Typhoon Warning Centre (JTWC)

Cambodia: NCDM;
Indonesia: BNPB, BMKG, PVMBG;
Philippines: NDRRMC, PAGASA, PHIVOLCS;
Thailand: DDPM;

Various news agencies

DISCLAIMER

The AHA Centre was established in November 2011 by the
Association of Southeast Asian Nations (ASEAN) Member
States to facilitate cooperation and coordination among
Member States, relevant agencies of the United Nations
and international organisations in disaster management and
emergency response.

This update consists of significant natural disaster events
that occurred in ASEAN Member States – Brunei
Darussalam, Cambodia, Indonesia, Lao PDR, Malaysia,
Myanmar, Philippines, Singapore, Thailand, and Viet Nam.
The disasters recorded include Drought, Flood, Earthquake,
Tsunami, Volcano, Wind, Landslide, and Storm.

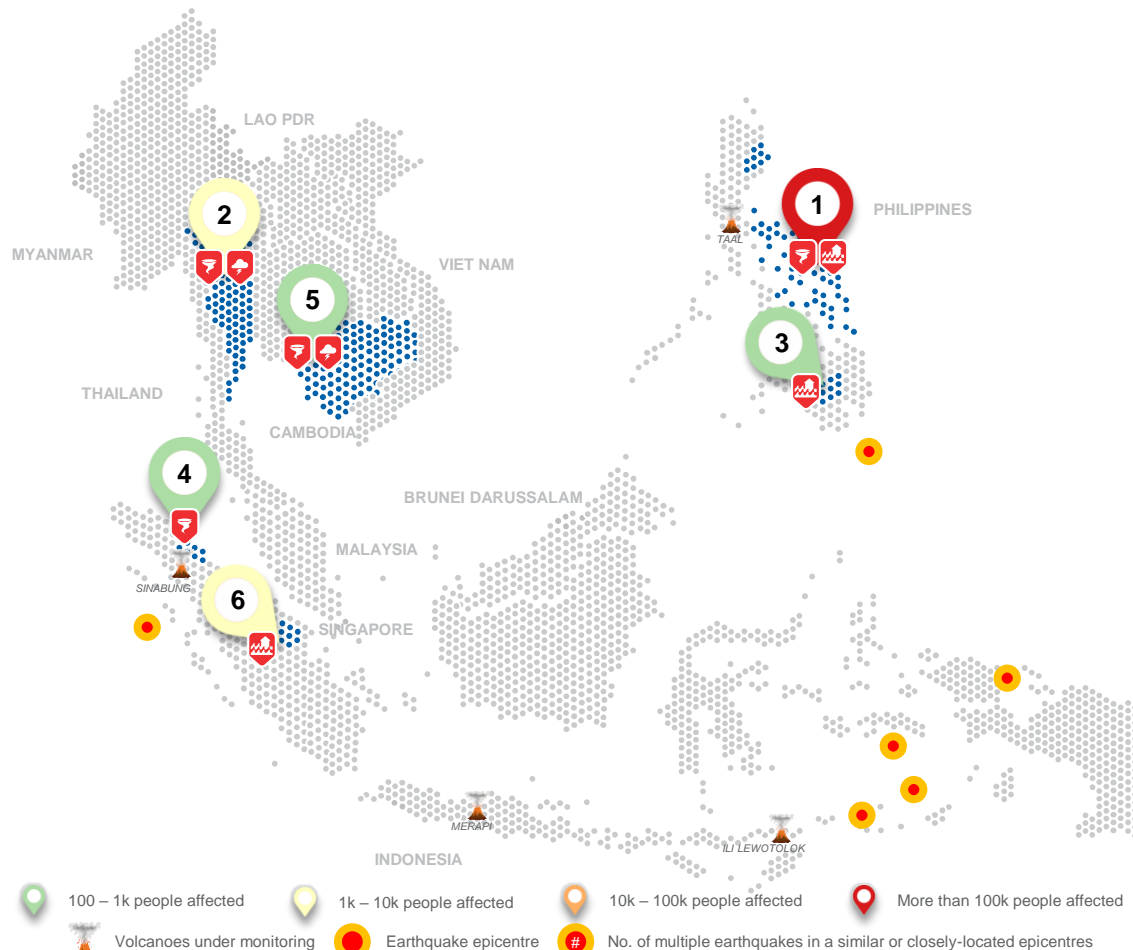
The use of boundaries, geographic names, related
information, and potential considerations for response are
for references, not warranted to be error-free or implying
official endorsement from ASEAN Member States.

© 2021 AHA Centre.
All rights reserved.

For inquiries, comments, and/or suggestions,
you may reach us through dma@ahacentre.org



SCAN TO SUBSCRIBE



- 100 – 1k people affected
- 1k – 10k people affected
- 10k – 100k people affected
- More than 100k people affected
- Volcanoes under monitoring
- Earthquake epicentre
- No. of multiple earthquakes in a similar or closely-located epicentres

REGIONAL TALLY



Note: Estimations are based on data reported/confirmed by National
Disaster Management Organisations of each respective ASEAN
Member State and other verified sources

- 01 Philippines, Typhoon SURIGAE (Bising)**
19 Apr 2021
- 02 Thailand, Windstorms in 15 Provinces**
20 Apr 2021
- 03 Philippines, Flooding in Libungan, Cotabato (Region XII)**
20 Apr 2021
- 04 Indonesia, Strong Wind in Langkat Regency and Whirlwind in Serdang Begadai Regency (North Sumatra)**
20, 23 Apr 2021
- 05 Cambodia, Storms and strong winds in Serey Sophorn (Banteay Meanchey)**
21 Apr 2021
- 06 Indonesia, Flooding in Kampar and Siak Regency (Riau)**
22, 24 Apr 2021

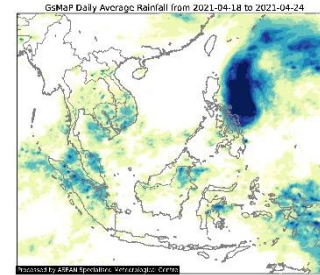
REGIONAL SUMMARY:

A total of 13 disasters (4 floods, 3 storms, and 6 winds-related) affected the region in week 16. These disasters occurred in Cambodia, Indonesia, the Philippines and Thailand. National Committee for Disaster Management (NCDM) reported strong winds and storms occurred in Bântéay Méanchey, Cambodia. High intensity rain caused floods and winds in two (2) provinces in Indonesia as reported by Badan Nasional Penanggulangan Bencana (BNPB). Typhoon SURIGAE caused flood and winds in five (5) regions while localized thunderstorm which resulted to flooding occurred in Cotabato Province, Philippines as reported by the National Disaster Risk Reduction and Management Council (NDRRMC). Lastly, the Department of Disaster Prevention and Mitigation (DDPM) reported that low pressure area covering upper Thailand together with the southwestern wind resulted in windstorms in 15 provinces since 20 April.

HIGHLIGHT:

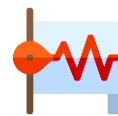
According to The Philippine Atmospheric, Geophysical and Astronomical Services Administration (PAGASA), Typhoon SURIGAE entered the Philippine Area of Responsibility on 16 April 2021 at 0520H and has intensified into a Typhoon by 0700H. According to the National Disaster Risk Reduction and Management Council (NDRRMC), as of 26 April, a total of 99.9K families (408.1K persons) affected, 4 people died, 13 suffered injuries, and 2,989 houses damaged in 1,159 Barangays in Regions II, V, VIII, and Caraga caused by flood and wind (Typhoon SURIGAE). It cost 5.4M USD worth of damage to agriculture and 219.1K USD worth of damage to infrastructure as reported by NDRRMC. According to NDRRMC, 73.4K USD worth of assistance have been provided to the victims of the effects of the Typhoon SURIGAE.

HYDRO-METEO-CLIMATOLOGICAL:



For the past week, data from the ASEAN Specialised Meteorological Centre (ASMC) showed high 7-day average rainfall spreading mostly in eastern part of the Philippines and Philippines sea that was caused by Typhoon SURIGAE spreading to southern and central parts of Papua and eastern parts of Sumatra. As of reporting, no tropical cyclone advisory has been issued by the JTWC.

GEOPHYSICAL:



Six (6) significant earthquakes (M≥5.0) were recorded in the region by Indonesia's Badan Meteorologi Klimatologi dan Geofisika (BMKG) and the Philippine Institute of Volcanology and Seismology (PHIVOLCS). Mount Sinabung, Merapi, and Ili Lewotolok (alert level III) in Indonesia and Taal Volcano in the Philippines (alert level 2) reported recent volcanic activity and under close monitoring. Volcanic activity also reported for Mount Semeru and Ibu in Indonesia as reported by PVMBG.

OUTLOOK:



For the coming week, according to ASMC, cooler conditions are expected over central and southeastern Mainland Southeast Asia, as well as northern and central Philippines. There is a small increase in chance for extreme cold conditions in Most of Thailand apart from southern Thailand and western parts of Cambodia, and northern Philippines.