



ONE ASEAN
ONE RESPONSE

WEEKLY DISASTER UPDATE

Week 23
7 – 13 Jun 2021

- ahacentre.org
- ahacentre
- @ahacentre
- @ahacentre

The AHA Centre, GRAHA BNPB 13th floor,
Jl. Raya Pramuka Kav. 38, East Jakarta 13120 Indonesia

SOURCES

ASEAN Disaster Monitoring & Response System (DMRS);
ASEAN Specialised Meteorological Centre (ASMC); Joint
Typhoon Warning Centre (JTWC)
Indonesia: BNPB, BMKG, PVMBG;
Philippines: NDRRMC, PAGASA, PHIVOLCS;
Viet Nam: NCHMF

Various news agencies

DISCLAIMER

The AHA Centre was established in November 2011 by the
Association of Southeast Asian Nations (ASEAN) Member
States to facilitate cooperation and coordination among
Member States, relevant agencies of the United Nations
and international organisations in disaster management and
emergency response.

This update consists of significant natural disaster events
that occurred in ASEAN Member States – Brunei
Darussalam, Cambodia, Indonesia, Lao PDR, Malaysia,
Myanmar, Philippines, Singapore, Thailand, and Viet Nam.
The disasters recorded include Drought, Flood, Earthquake,
Tsunami, Volcano, Wind, Landslide, and Storm.

The use of boundaries, geographic names, related
information, and potential considerations for response are
for references, not warranted to be error-free or implying
official endorsement from ASEAN Member States.

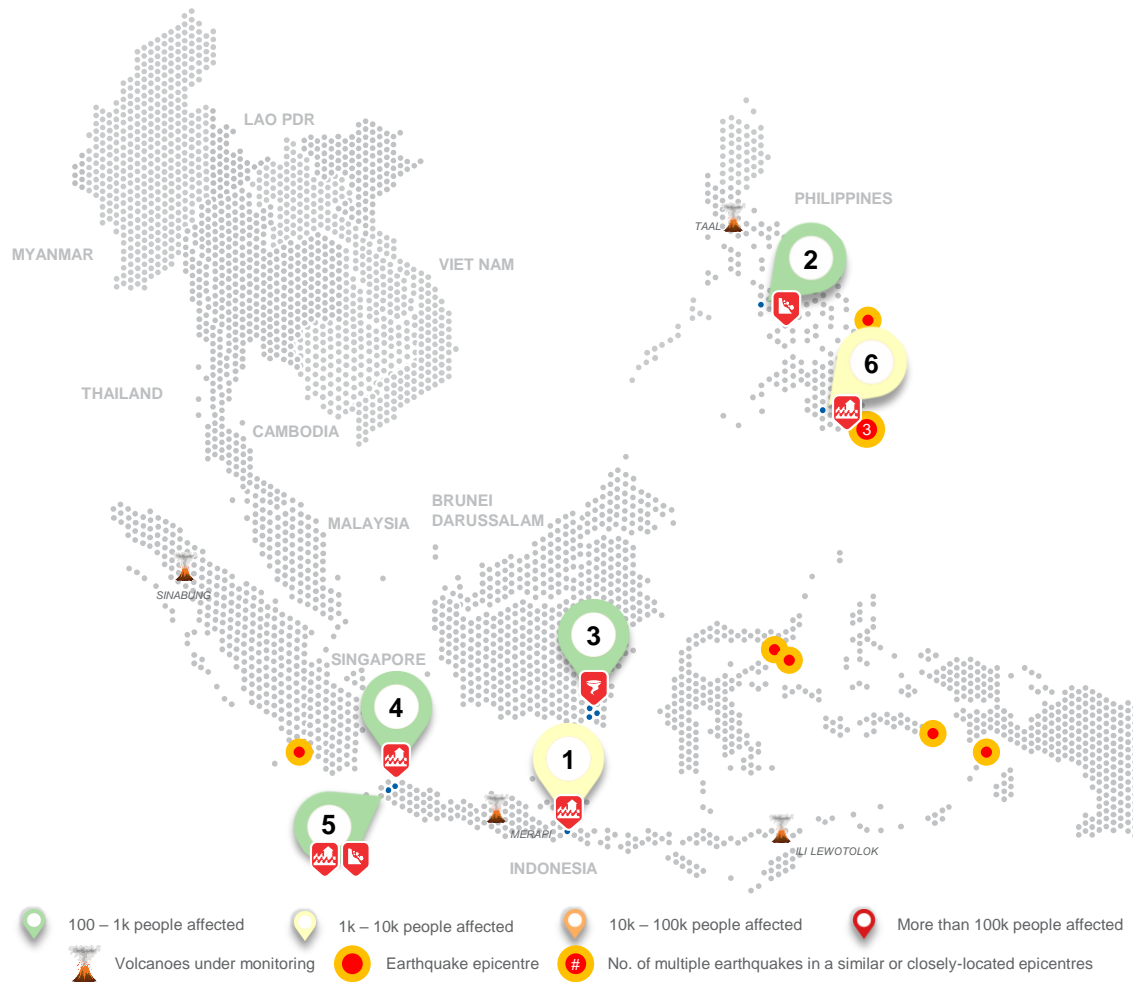
© 2021 AHA Centre.
All rights reserved.

For inquiries, comments, and/or suggestions,
you may reach us through dma@ahacentre.org



You are receiving this email because you are
registered in our distribution list.

SCAN TO SUBSCRIBE



- 100 – 1k people affected
- 1k – 10k people affected
- 10k – 100k people affected
- More than 100k people affected
- Volcanoes under monitoring
- Earthquake epicentre
- No. of multiple earthquakes in a similar or closely-located epicentres

REGIONAL TALLY



Note: Estimations are based on data reported/confirmed by National
Disaster Management Organisations of each respective ASEAN
Member State and other verified sources

REGIONAL SUMMARY:

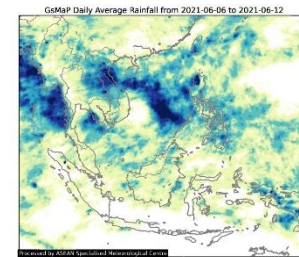
A total of 7 disasters (4 floods, 2 landslides, and 1 wind-related) affected the region in the 23rd week of 2021. Indonesia and the Philippines have reportedly been affected. Several localised high-intensity rainfall, strong winds, and the overflowing of a river caused disasters in Indonesia as reported by Indonesia's Badan Nasional Penanggulangan Bencana (BNPB). In the Philippines, recurring ground shaking caused a landslide in Antique and heavy rains with strong winds caused flash floods in South Cotabato (NDRRMC).

HIGHLIGHT:

From 12-13 June, 5.05M households (19.3M persons) and \$85.8B USD of capital (building and infrastructure) in Viet Nam were exposed to the effects of Tropical Depression KOGUMA (LIMITED severity) (NCHMF, DMRS). Warnings for strong wind at sea and over land as well as heavy rain and thunderstorms were issued by NCHMF.

On 11 June, a flash flood incident occurred in five (5) barangays in Tuntungan, South Cotabato due to heavy rains associated with strong winds brought by monsoon trough affecting the Philippines and other areas in Mindanao (NDRRMC).

HYDRO-METEO-CLIMATOLOGICAL:



For the past week, data from the ASEAN Specialised Meteorological Centre (ASMC) shows high average rainfall in the Northern ASEAN region. The development of Tropical Depression KOGUMA also brought high rainfall in Viet Nam. The Southwest Monsoon is expected on June 2021 and is traditionally dry season for the Southern ASEAN region and rainy season for the Northern ASEAN region. As of reporting, there are no tropical cyclone advisories in the region (JTWC).

GEOPHYSICAL:

Nine (9) significant earthquakes (M≥5.0) were recorded in the region by Indonesia's Badan Meteorologi Klimatologi dan Geofisika (BMKG) and the Philippine Institute of Volcanology and Seismology (PHIVOLCS). Ili Lewotolok and Sinabung (on Alert Level III) and Taal (Alert Level 2) reported recent volcanic activity and is under close monitoring. Lastly, Kerinci and Semeru in Indonesia remain on Alert Level II and Mayon and Kanlaon in the Philippines on Alert Level 1 despite recent volcanic activity per PVMBG and PHIVOLCS.

OUTLOOK:

For the coming week, the ASMC forecasts wetter conditions for the western coastal region of Myanmar and drier conditions for the Northern ASEAN region; warmer temperatures for much of the southern parts of the Maritime continent and much of mainland Southeast Asia. For the regional assessment of extremes, there is a small increase in chance for a very heavy rainfall event in coastal Myanmar and Western Java; small increase in chance for extended dry conditions in central and eastern Mainland Southeast Asia, central and northern Philippines, Southern Thailand, Northern Sumatra, and Nusa Tenggara; moderate increase in chance for extreme hot conditions in Java Island and Nusa Tenggara.