

SUNDAY
13 JUN 2021
0900 HRS UTC +7

TROPICAL DEPRESSION KOGUMA

VIET NAM

FLASH UPDATE #1



Tropical Depression Koguma - Estimated Impacts

Warning 4, 12 June 2021 2100 UTC

PDC-5W-4A

JTWC Summary: TROPICAL DEPRESSION 05W (KOGUMA), LOCATED APPROXIMATELY 45 NM SOUTHEAST OF HANOI, VIETNAM, HAS TRACKED NORTHWESTWARD AT 09 KNOTS OVER THE PAST SIX HOURS. THIS IS THE FINAL WARNING ON THIS SYSTEM BY THE JOINT TYPHOON WRNCRN PEARL HARBOR HI. THE SYSTEM WILL BE CLOSELY MONITORED FOR SIGNS OF REGENERATION.



KEY FIGURES



19.3M
ESTIMATED
POPULATION EXPOSED*

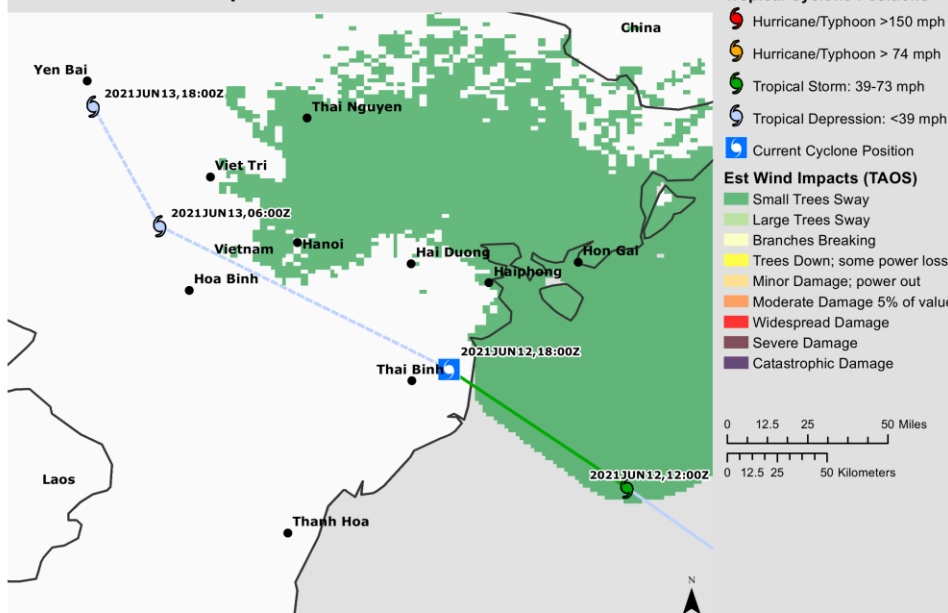


5.05M
ESTIMATED
HOUSEHOLDS EXPOSED*

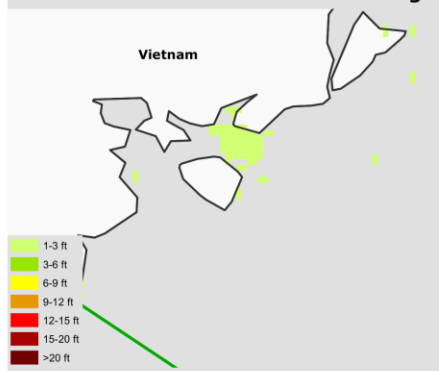


\$85.8B
CAPITAL EXPOSED* (BUILDINGS
AND INFRASTRUCTURE)

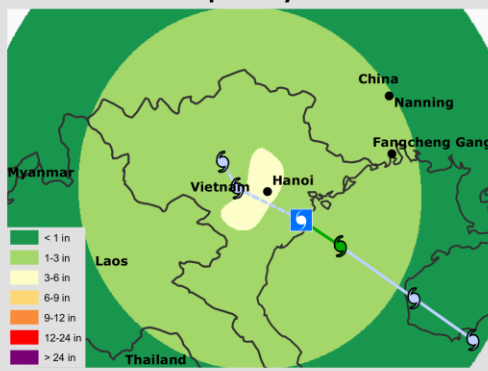
Estimated Wind Impacts



Estimated Still Water Storm Surge



Estimated Tropical Cyclone Rainfall



- **OVERVIEW:** As of 13 Jun 2021, 0700 HRS UTC+7, **Tropical Depression (TD) KOGUMA** has reportedly made landfall and is at about 19.9 degrees North latitude, 105.5 degrees East longitude, on the mainland Thanh Hoa area moving Northwest at about 17 km/h and is expected to weaken over 24 hours. It is cautioned that the storm's actual position may shift significantly over the next few days ([DMRS](#), [NCHMF](#)).
- **INTENSITY:** the strongest wind speeds in the area near the centre of the tropical depression is 50-60 km/h with strong wind gusts extending up to 80 km from the centre of the tropical depression ([NCHMF](#)).
- **IMPACTS:** Forecast from PDC-Global's TAOS model indicate that **winds strong enough to cause tree branches to sway** may be experienced in Thai Nguyen, Viet Tri, Hanoi, Hai Duong, Hai Phong, and Hon Gai in Viet Nam; **1-3 ft (0.3-0.9 m) of storm surge** may be experienced in the coasts of Hon Gai; and **at most 3-6 in (7.6-15.2 cm) of associated rainfall** may be experienced along the storm's track ([PDC-Global](#)).
- **OUTLOOK:** According to Viet Nam's National Centre for Hydro-Meteorological Forecasting ([NCHMF](#)), **TD KOGUMA** will continue moving northwest at 15-20 km/h and will weaken further. By 13 Jun, 1300 HRS UTC+7, the centre of the tropical depression will be located on the Viet Nam-Laos border area with wind speeds near the centre of the storm ranging from 40-50 km/h then gradually weakening into a low pressure area.
- **HAZARDS:** strong wind warning at sea in the Gulf of Tonkin (including Bach Long Vi island district) with wave heights up to 3.0 m; strong winds over Northern Delta and Thanh Hoa; heavy rain and thunderstorms with 50-120 mm of rainfall ([NCHMF](#)).
- The AHA Centre will continue to monitor for further developments and issue necessary updates.

DATA SOURCES

ASEAN Disaster Monitoring & Response System (DMRS); Pacific Disaster Center (PDC Global);

Viet Nam: NCHMF

Verified news media agencies

DISCLAIMER

The AHA Centre was established in November 2011 by the Association of Southeast Asian Nations (ASEAN). Member States to facilitate cooperation and coordination among the Member States, relevant agencies of the United Nations, and international organisations in disaster management and humanitarian assistance.

The use of boundaries, geographic names, related information and potential considerations for response are for reference, not warranted to be error free or implying official endorsement from ASEAN Member States.

© 2021 AHA Centre.

All rights reserved.

You are receiving this email because you are registered in our distribution list.

Our mailing address is:
AHA Centre,
GRAHA BNPB 13th Floor,
Jl. Raya Pramuka Kav. 38,
Jakarta 13120 Indonesia

Pacific Disaster Center | 6/12/2021 | <http://www.pdc.org> | response@pdc.org | Data: NOAA, KinetiCastTC, ESRI. © 2015-2021 Pacific Disaster Center (PDC) - All rights reserved. Commercial use is permitted only with explicit approval of PDC. The delineation of political boundaries, and associated data shown here do not imply endorsement by PDC.