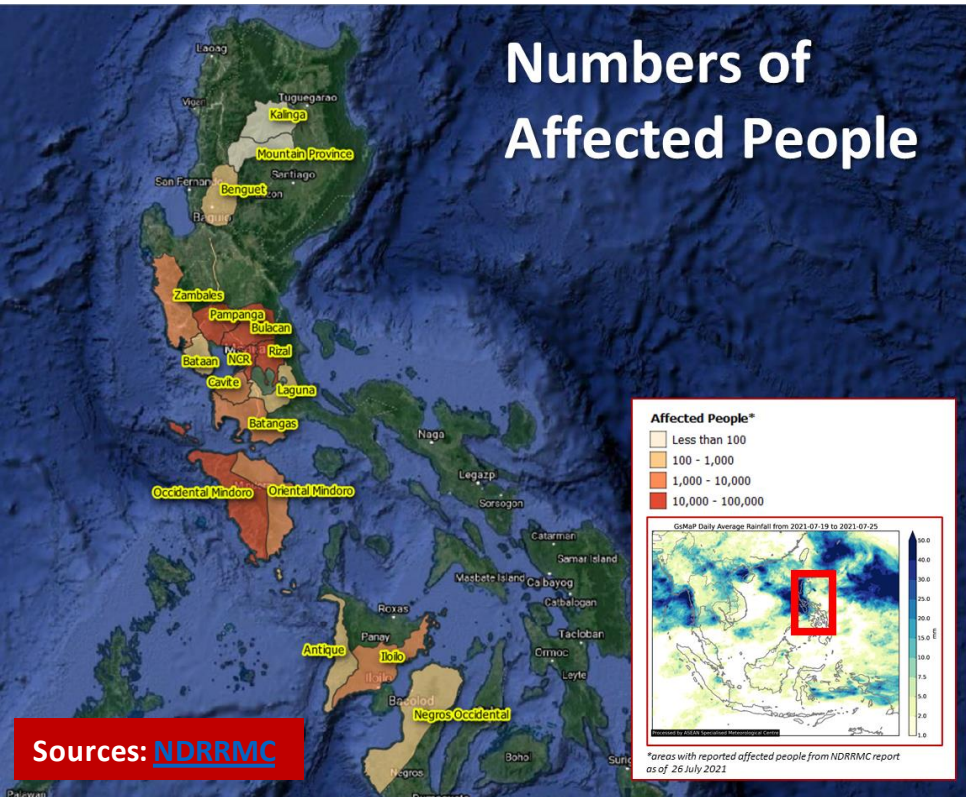


## Numbers of Affected People



Sources: [NDRRMC](#)

- **OVERVIEW:** Tropical Cyclone IN-FA (local name: FABIAN) has reportedly exited the Philippine Area of Responsibility (PAR) as of 24 Jul. The Southwest Monsoon brought moderate to heavy with at times intense rains in multiple regions of the Philippines according to the National Disaster Risk Reduction and Management Council ([NDRRMC](#)).

- **IMPACTS:**

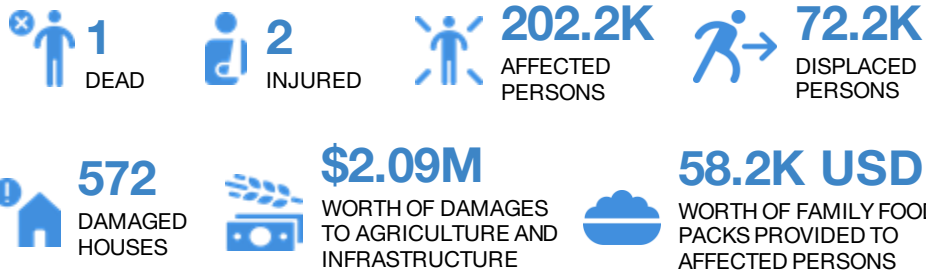
1. Southwest Monsoon-related incidents were reported for Regions 1, 2, 3, 6, CALABARZON, MIMAROPA, CAR, and NCR. These are lightning incident, unpassable road, rain-induced landslides, uprooted trees, flooding, maritime incidents, rockslide, sinkhole, storm surges, and rock and mudflow.
2. The effects of the enhanced Southwest Monsoon has resulted in **1 death** and **2 injuries**. It has also **affected 480 barangays, 50,676 families (202,213 persons), and displaced 72,239 people (38,472 in 365 evacuation centres)**.
3. Reported damages due to the Southwest Monsoon are as follows: **572 damages houses (447 partially, 143 totally), approximately 2.05M USD worth of agricultural damages, and 48.4K USD worth of damage to infrastructure.**
4. For critical lifelines, a total of **26 cities/municipalities experienced power interruption/outage** of which, power supply in **23 cities/municipalities were already restored**. A total of **7 ports** were reported **non-operational, none of which have restored operations as of reporting.**

- **RESPONSE:** **58.2K USD worth of Family Food Packs** have been distributed to the affected population in Regions 3, 6, CALABARZON, MIMAROPA, and CAR. **16.6M USD worth of quick response funds, 3.3M USD worth of family food packs, and 13.3M USD worth of other food and non-food items** are still available in the central and field offices of the Department of Social Welfare and Development ([DSWD](#)). Local disaster management authorities are closely coordinating with local government units for updates on the situations.

- The AHA Centre will continue to monitor for further developments and issue necessary updates.

## KEY FIGURES

Disclosure(s): Estimations are based on data reported/confirmed by National Disaster Management Organisations of the respective ASEAN Member State (National Disaster Risk Reduction and Management Council) and other verified sources



### DATA SOURCES

ASEAN Disaster Monitoring & Response System (DMRS); Pacific Disaster Center (PDC Global);

Philippines: NDRRMC, DSWD

Verified news media agencies

### DISCLAIMER

The AHA Centre was established in November 2011 by the Association of Southeast Asian Nations (ASEAN) Member States to facilitate cooperation and coordination among the Member States, relevant agencies of the United Nations, and international organisations in disaster management and humanitarian assistance.

The use of boundaries, geographic names, related information and potential considerations for response are for reference, not warranted to be error free or implying official endorsement from ASEAN Member States.

© 2021 AHA Centre.

All rights reserved.

You are receiving this email because you are registered in our distribution list.

Our mailing address is:  
AHA Centre,  
GRAHA BNPB 13<sup>th</sup> Floor,  
Jl. Raya Pramuka Kav. 38,  
Jakarta 13120 Indonesia