



ONE ASEAN
ONE RESPONSE

WEEKLY DISASTER UPDATE

Week 31
02 – 08 August 2021

- ahacentre.org
- ahacentre
- @ahacentre
- @ahacentre

The AHA Centre, GRAHA BNPB 13th floor,
Jl. Raya Pramuka Kav. 38, East Jakarta 13120 Indonesia

SOURCES

ASEAN Disaster Monitoring & Response System (DMRS);
ASEAN Specialised Meteorological Centre (ASMC); Joint
Typhoon Warning Centre (JTWC)

Indonesia: BNPB, BMKG, PVMBG;
Philippines: NDRRMC, PHIVOLCS;

Various news agencies

DISCLAIMER

The AHA Centre was established in November 2011 by the
Association of Southeast Asian Nations (ASEAN) Member
States to facilitate cooperation and coordination among
Member States, relevant agencies of the United Nations
and international organisations in disaster management and
emergency response.

This update consists of significant natural disaster events
that occurred in ASEAN Member States – Brunei
Darussalam, Cambodia, Indonesia, Lao PDR, Malaysia,
Myanmar, Philippines, Singapore, Thailand, and Viet Nam.
The disasters recorded include Drought, Flood, Earthquake,
Tsunami, Volcano, Wind, Landslide, and Storm.

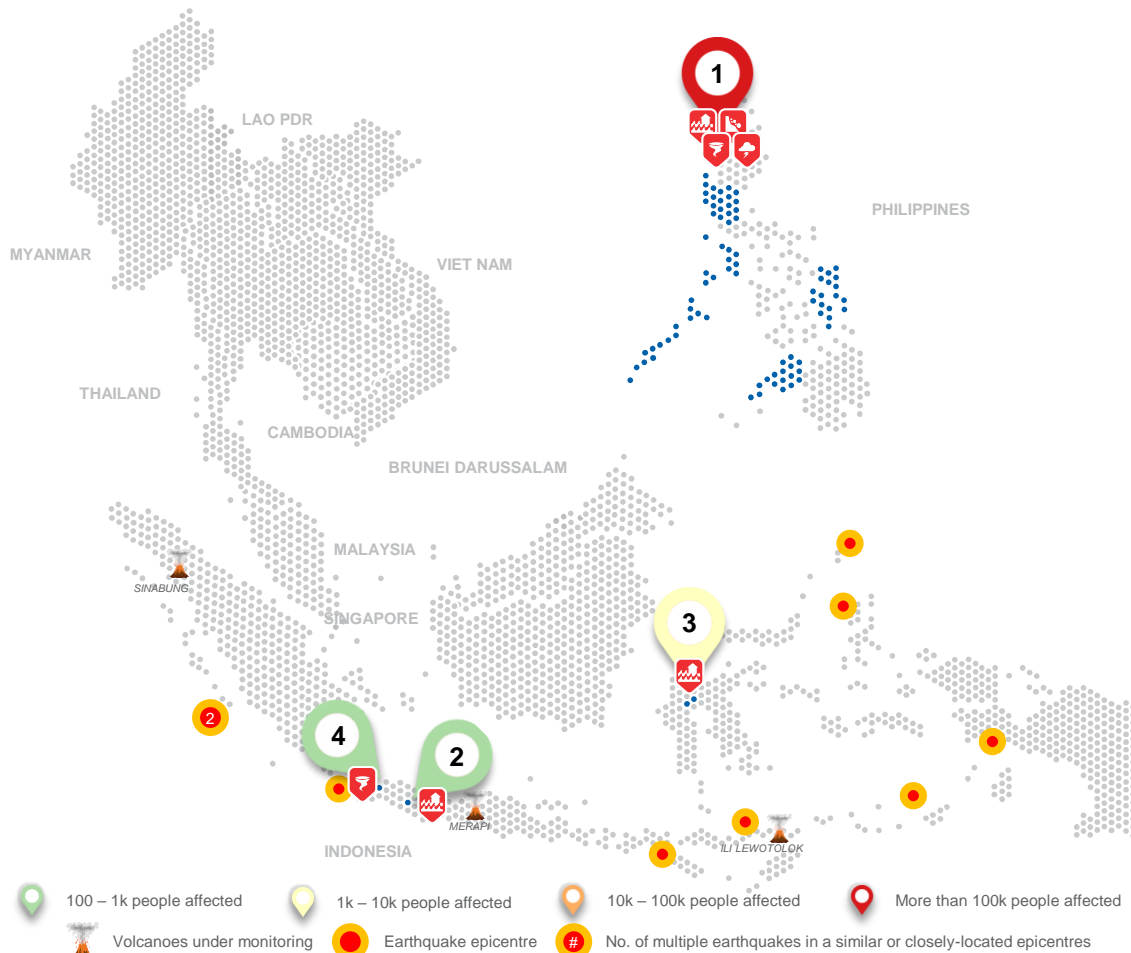
The use of boundaries, geographic names, related
information, and potential considerations for response are
for reference, not warranted to be error-free or implying
official endorsement from ASEAN Member States.

© 2021 AHA Centre.
All rights reserved.

For inquiries, comments, and/or suggestions,
you may reach us through dma@ahacentre.org



SCAN TO SUBSCRIBE



- 100 – 1k people affected
- 1k – 10k people affected
- 10k – 100k people affected
- More than 100k people affected
- Volcanoes under monitoring
- Earthquake epicentre
- No. of multiple earthquakes in a similar or closely-located epicentres

REGIONAL TALLY



01 Philippines, [Flooding, Landslide, Winds, and Storms in 7 Regions](#) (Regions 3, 8, 9, MIMAROPA, CAR, NCR) *From week 30, update as of 6 Aug 28 Jul 2021*

02 Indonesia, Strong Wind in [Cimahi City](#) (West Java) *02 Aug 2021*

03 Indonesia, Flooding in [Masamba, Bone Bone, and South Sukamaju Subdistrict, North Luwu Regency](#) (South Sulawesi) *03, 06 Aug 2021*

04 Indonesia, Flooding in [Cilegon City](#) (Banten) *05 Aug 2021*

Note: Estimations are based on data reported/confirmed by National Disaster Management Organisations of each respective ASEAN Member State and other verified sources

REGIONAL SUMMARY:

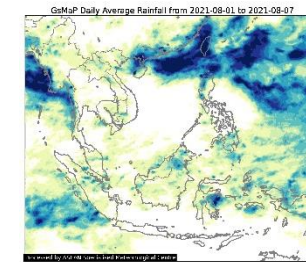
For the thirty-first (31st) week of 2021, a total of 4 disasters (3 floods and 1 wind-related) affected the region. Indonesia has reportedly been affected. Strong winds in Cimahi City in West Java and flooding in North Luwu in South Sulawesi and Cilegon City in Banten was reported by Badan Nasional Penanggulangan Bencana ([BNPB](#)). The flooding in North Luwu Regency in South Sulawesi was identified to have been caused by heavy rainfall and the overflowing of Masamba and Lamoja Rivers in Masamba, Bone Bone and South Sukamaju Subdistricts, respectively.

HIGHLIGHT:

Localised heavy rainfall that have caused the overflowing of rivers in Banten and multiple subdistricts in North Luwu Regency in South Sulawesi have affected 1.8K people according to the reports from [BNPB](#). Latest reports indicate that floods in these areas have already receded.

As of 6 Aug 2021, the National Disaster Risk Reduction and Management Council ([NDRRMC](#)) reported that the effects of the Southwest Monsoon in seven (7) regions of the Philippines has reached 1.06M affected persons, 1 death, 2 missing, 255.7K displaced into 135 evacuation centres, 371 damaged houses, 102 damaged roads, and damages to infrastructure and agriculture amounting to 7.48M USD. In response, 55.4K USD worth of assistance have already been provided to those affected by the effects of the Southwest Monsoon.

HYDRO-METEO-CLIMATOLOGICAL:



For the past week, data from the ASEAN Specialised Meteorological Centre ([ASMC](#)) showed noticeable high 7-day average rainfall across north of the Philippines due to the development of Tropical Cyclone Lupit that grazed the tip of Philippine Area of Responsibility, and Tropical Cyclone Mirinae that moved northeastwards from the southern waters of Japan. High 7-day average rainfall was also detected in the coasts of Myanmar. As of reporting, there are no tropical cyclone advisories for the region according to the [JTWC](#).

GEOPHYSICAL:

Nine (9) significant earthquakes (M≥5.0) were recorded in the region by Indonesia's Badan Meteorologi Klimatologi dan Geofisika ([BMKG](#)). Ili Lewotolok and Merapi in Indonesia (Alert level III) reported recent volcanic activity and are under close monitoring. Volcanic activity was also reported for Mount Semeru and Dukono in Indonesia according to Pusat Vulkanologi dan Mitigasi Bencana Geologi ([PVMBG](#)) and Mount Taal (Alert Level 2), Bulusan, Kanlaon, and Pinatubo (Alert Level 1) according to the Philippine Institute for Volcanology and Seismology ([PHIVOLCS](#)).

OUTLOOK:

According to the [ASMC](#), for the coming week, wetter conditions should be expected over most of the southern ASEAN region and will persist until the following week except in the Western Maritime Continent; drier conditions should be expected over western parts of Mainland Southeast Asia. Warmer temperatures for most of Mainland Southeast Asia and the southern parts of the Maritime Continent and cooler temperatures over parts of the central Maritime continent are forecasted for the coming week. For the regional assessment of extremes, there is a small increase in chance for a very heavy rainfall event in the Southern Maritime Continent; small increase in chance for extreme hot conditions for the Southern Maritime Continent and the central part of Mainland Southeast Asia.