



ONE ASEAN  
ONE RESPONSE

# WEEKLY DISASTER UPDATE

Week 41  
11 – 17 October 2021

- ahacentre.org
- ahacentre
- @ahacentre
- @ahacentre

The AHA Centre, GRAHA BNPB 13th floor,  
Jl. Raya Pramuka Kav. 38, East Jakarta 13120 Indonesia

#### SOURCES

ASEAN Disaster Monitoring & Response System (DMRS);  
ASEAN Specialised Meteorological Centre (ASMC); Joint  
Typhoon Warning Centre (JTWC)

Cambodia: NCDM  
Indonesia: BNPB, BMKG, PVMBG;  
Philippines: NDRRMC, PHIVOLCS;  
Thailand: DDPM;  
Viet Nam: VNDMA;

Various news agencies

#### DISCLAIMER

The AHA Centre was established in November 2011 by the  
Association of Southeast Asian Nations (ASEAN) Member  
States to facilitate cooperation and coordination among  
Member States, relevant agencies of the United Nations  
and international organisations in disaster management and  
emergency response.

This update consists of significant natural disaster events  
that occurred in ASEAN Member States – Brunei  
Darussalam, Cambodia, Indonesia, Lao PDR, Malaysia,  
Myanmar, Philippines, Singapore, Thailand, and Viet Nam.  
The disasters recorded include Drought, Flood, Earthquake,  
Tsunami, Volcano, Wind, Landslide, and Storm.

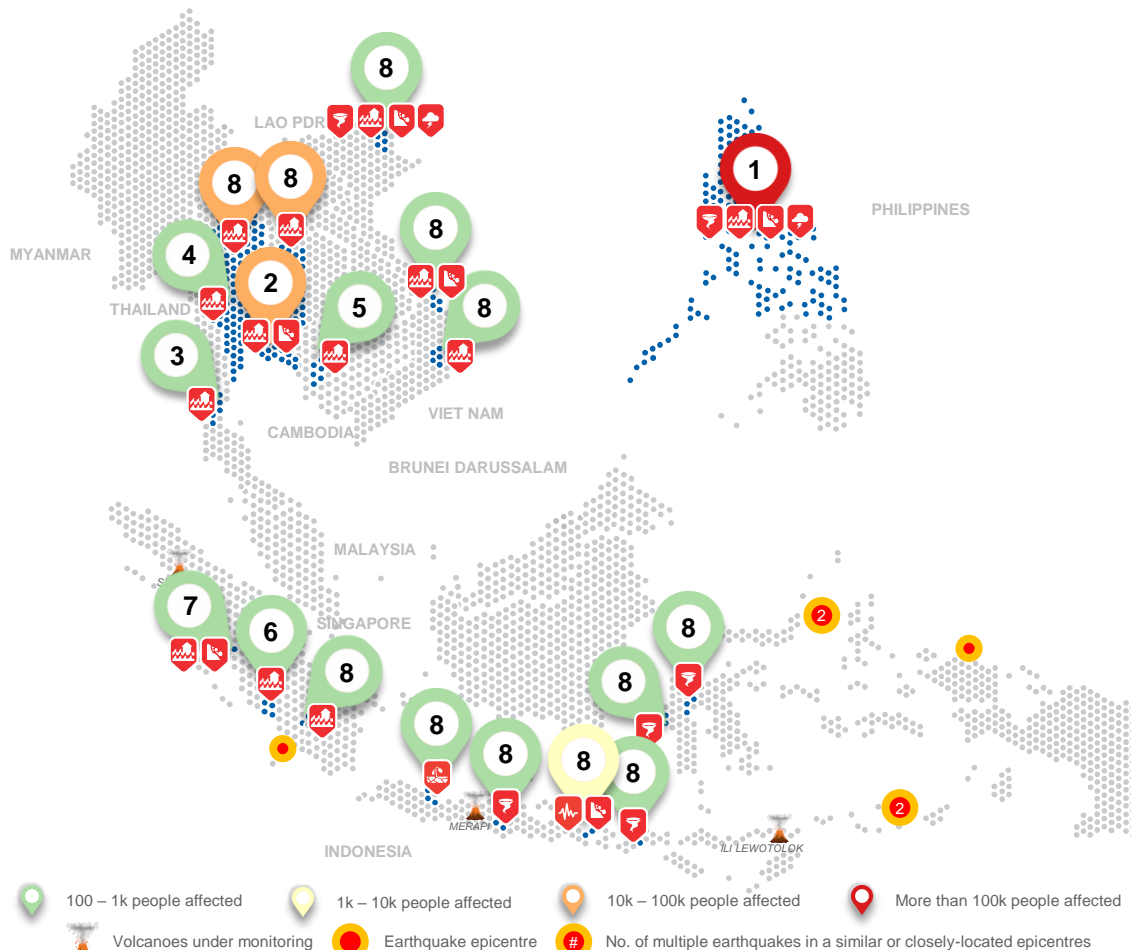
The use of boundaries, geographic names, related  
information, and potential considerations for response are  
for references, not warranted to be error-free or implying  
official endorsement from ASEAN Member States.

© 2021 AHA Centre.  
All rights reserved.

For inquiries, comments, and/or suggestions,  
you may reach us through [dma@ahacentre.org](mailto:dma@ahacentre.org)

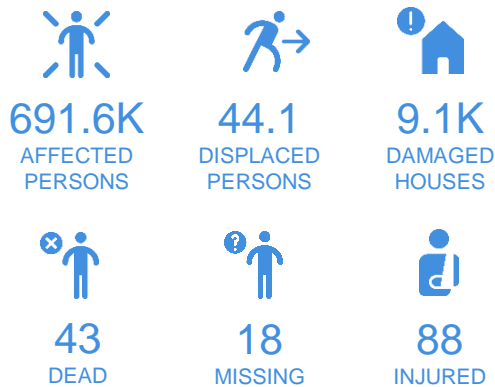


SCAN TO SUBSCRIBE



- 100 – 1k people affected
- 1k – 10k people affected
- 10k – 100k people affected
- More than 100k people affected
- Volcanoes under monitoring
- Earthquake epicentre
- No. of multiple earthquakes in a similar or closely-located epicentres

## REGIONAL TALLY



Note: Estimations are based on data reported/confirmed by National Disaster Management Organisations of each respective ASEAN Member State and other verified sources

- 01 Philippines, Flooding, Landslide, Storms, and Winds in Region 1, 2, 3, 6, MIMAROPA, CAR, CARAGA (TC KOMPASU)**  
11 Oct 2021
- 02 Thailand, Flooding in Kao Khitchakut, Khlung, Tha Mai, Mueng, and Laem Sing District (Chanthaburi) and Muang District (Loei), and Landslide in Mueang, Wang Muang, Saohai, and Chaloen Phrakiat District (Saraburi)**  
11, 12, 13 Oct 2021
- 03 Thailand, Flooding in Kapur, Mueang, and Kraburi District (Ranong)**  
12 Oct 2021
- 04 Thailand, Flooding in Sop Prap District (Lampang)**  
12 Oct 2021
- 05 Cambodia, Flooding in Kampong Speu Province**  
13 Oct 2021
- 06 Indonesia, Flooding in Bengkulu City and Central Bengkulu Regency (Bengkulu)**  
13, 14 Oct 2021
- 07 Indonesia, Flooding and Landslide in Padang Panjang City (West Sumatra)**  
13 Oct 2021
- 08 Other events: Indonesia – North Luwu (14-10), Polewali Mandar (14-10), Majalengka (14-10), Sumbawa (15-10), Bali (16-10), Madiun (17-10), Ogan Komering Ulu Thailand – 6 Provinces (15-10), 8 Provinces (17-10), Viet Nam – Yen Bai (16-10), Da Lak (16-10), Quang Nam (16-10)**

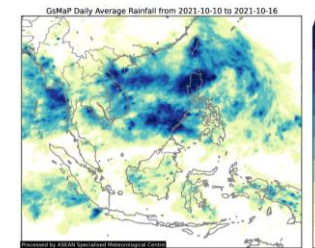
## REGIONAL SUMMARY:

For the forty-first (41<sup>st</sup>) week of 2021, a total of 31 disasters (1 drought, 1 earthquake, 15 floods, 6 landslides, 2 storms, and 6 wind-related) affected the region. Cambodia, Indonesia, the Philippines, Thailand, and Viet Nam have reportedly been affected. According to the [media](#), flooding occurred in Kampong Speu Province, Cambodia. Hydro-meteorological disasters (drought, flooding, landslides, and winds), earthquake, and earthquake-induced landslide have been reported in nine (9) provinces in Indonesia by Badan Nasional Penanggulangan Bencana ([BNPB](#)). Tropical Cyclone (TC) KOMPASU caused flooding, landslides, storms, and winds in Region 1, 2, 3, 6, MIMAROPA, CAR, and CARAGA in the Philippines as reported by the Philippine's National Disaster Risk Reduction and Management Council ([NDRRMC](#)). The Thailand's Department of Disaster Prevention and Mitigation ([DDPM](#)) reported widespread flooding and landslide in the North, Northeast, East, Central and West Region of Thailand. Lastly, flooding, landslide, wind and storm occurred in three (3) provinces in Viet Nam as reported by the Viet Nam National Disaster Management Authority ([VNDMA](#)).

## HIGHLIGHT:

According to the Philippine's [NDRRMC](#), TC KOMPASU resulted in a floods, landslides, storms and winds in Region 1, 2, 3, 6, MIMAROPA, CAR, and CARAGA . The events have affected 158.5K families (626.2K people), claim the life of 40 individuals, 18 people reported missing, 5 injured, caused damages to 7.6K houses, 286 roads, 34 bridges, and 75.8M USD worth of damages to agriculture and infrastructure. According to the latest report, a total of 714.2K USD worth of assistance have been provided to the victims of and 21 cities/municipalities in Region 1 and MIMAROPA had declarations of state of calamity.

## HYDRO-METEO-CLIMATOLOGICAL:



For the past week, data from the ASEAN Specialised Meteorological Centre ([ASMC](#)) showed high 7-day average rainfall spreading across northern Luzon, Palawan, Philippines, North-Central Coast and South-Central Coast of Viet Nam. As of reporting, TC NAMTHEUN are located outside/moving away from the Region (JTWC).

## GEOPHYSICAL:

Six (6) significant earthquakes (M≥5.0) were recorded in the region by Indonesia's Badan Meteorologi Klimatologi dan Geofisika ([BMKG](#)). Ili Lewotolok in Indonesia (alert level III) and Taal in the Philippines (alert level II) reported recent volcanic activity and are under close monitoring. Volcanic activity was also reported for Semeru, Kerinci, and Ibu in Indonesia, and Kanlaon in the Philippines according to Pusat Vulkanologi dan Mitigasi Bencana Geologi ([PVMBG](#)) and the Philippine Institute of Volcanology and Seismology [PHIVOLCS](#).

## OUTLOOK:

According to the [ASMC](#), wetter conditions are expected over most of the Maritime Continent and Mainland Southeast Asia; Drier conditions are expected over the western Maritime Continent and parts of Borneo; Warmer than usual temperatures are predicted over much of the equatorial region; For the regional assessment of extremes, there is a small increase in chance for a very heavy rainfall event to occur in Northern Mainland Southeast Asia, parts of the equatorial region; moderate increase in chance for extreme hot conditions to occur in Northern Myanmar, northern Sumatra, and southeastern Indonesia; while the negative Indian Ocean Dipole (IOD) appears to be ending, there are signs of a La Niña developing in the Pacific. At the seasonal timescale, negative IOD events tend to bring wetter conditions to the southern Maritime Continent, while La Niña events bring wetter conditions to much of the ASEAN region.