

TUESDAY
21 DEC 2021
1200 HRS UTC +7

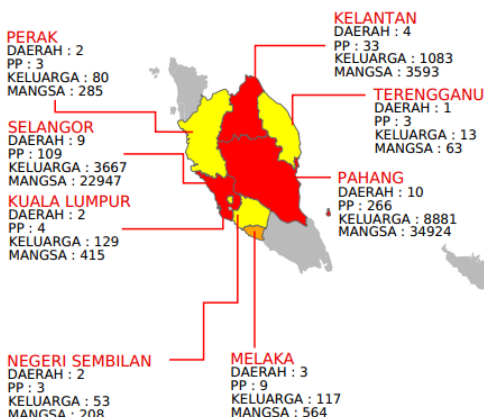
FLOODING IN 8 STATES MALAYSIA FLASH UPDATE #1



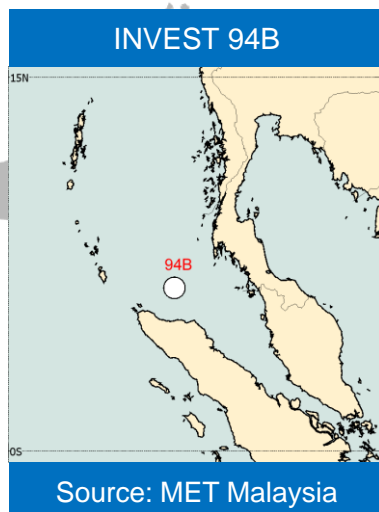
ONE ASEAN ONE RESPONSE



LAPORAN TERKINI KEJADIAN BENCANA DI SELURUH NEGARA (pada jam 8:00 AM, 21 Disember 2021)



GsMaP Daily Average Rainfall from 2021-12-13 to 2021-12-19



KEY FIGURES

Disclosures: Estimations are based on data reported/confirmed by National Disaster Management Organisations of the respective ASEAN Member State (Agensi Pengurusan Bencana Negara (NADMA) and other verified sources

62.9K
DISPLACED

430
EVACUATION CENTRE

249
ROADS

- OVERVIEW:** Heavy rains that have lasted since Dec 17 have caused a series of floods and flash flood in several parts of Malaysia. Jabatan Meteorologi Malaysia ([MET Malaysia](#)) has issued **Danger** criteria (expected to achieve continues heavy rain with rainfall exceeding 240 mm/day) in Terengganu and Pahang (Peninsular Malaysia), and **Severe** criteria (continues heavy rain) in Kelantan, Trengganu and Pahang.
- IMPACTS:** As of Dec 21st, 08:00 (UTC+8), The Malaysia's Agensi Pengurusan Bencana ([NADMA](#)) has reported **33 districts** in **8 states** affected by floods with a total of **62,999 persons** displaced in **430 evacuation centres** including:
 - Perak: **80 families/285 persons** displaced in 3 evacuation centres (2 districts)
 - Selangor: **3,667 families/22,947 persons** displaced in 109 evacuation centres (9 districts)
 - Kuala Lumpur: **129 families/415 persons** displaced in 4 evacuation centre (2 districts)
 - Negeri Sembilan: **53 families/208 persons** displaced in 3 evacuation centre (2 districts)
 - Melaka: **117 families/564 persons** displaced in 9 evacuation centre (3 districts)
 - Kelantan: **1,083 families/3,593 persons** displaced in 33 evacuation centre (4 districts)
 - Terengganu: **13 families/63 persons** displaced in 3 evacuation centre (1 district)
 - Pahang: **8,881 families/34,924 persons** displaced in 266 evacuation centre (10 districts)
- According to the ASEAN Disaster Information Network ([ADINet](#)), this series of flood events is the worst flood event in Malaysia for 2021 which is recorded more than 60K displaced persons in 430 evacuation centre over 8 states.
- RESPONSE:** Government of Malaysia deployed SMART (Special Malaysia Disaster Assistance and Rescue Team) to respond to the incidents and more than 66,000 personnel from police, army, the fire departments were mobilised to provide support and evacuation for the affected people. NADMA, Military, and other related agencies currently working on the response operations and evacuations. Damage and impact assessments are on-going by relevant authorities and agencies.
- FORECAST:** [MET Malaysia](#) has released a Tropical Depression Warning for **INVEST 94B** which is located at about 427 km southwest of Langkawi, Kedah, Malaysia with maximum wind speed at 56 km/h. **INVEST 94B** is forecasted to move north-northeast at 5 km/h and potentially to bring continues rainfall and strong wind over northern states in peninsular Malaysia and may cause flooding over low-lying areas.
- The AHA Centre will continue to monitor for further developments and issue necessary updates.

DATA SOURCES

ASEAN Disaster Monitoring & Response System (DMRS); Pacific Disaster Center (PDC Global); ASEAN Specialised Meteorological Centre (ASMC); Malaysia: NADMA, MET Malaysia;

Verified news media agencies

DISCLAIMER

The AHA Centre was established in November 2011 by the Association of Southeast Asian Nations (ASEAN) Member States to facilitate cooperation and coordination among the Member States, relevant agencies of the United Nations, and international organisations in disaster management and humanitarian assistance. The use of boundaries, geographic names, related information and potential considerations for response are for reference, not warranted to be error free or implying official endorsement from ASEAN Member States.

© 2021 AHA Centre.
All rights reserved.
You are receiving this email because you are registered in our distribution list.

Our mailing address is:
AHA Centre,
GRAHA BNPB 13th Floor,
Jl. Raya Pramuka Kav. 38,
Jakarta 13120 Indonesia