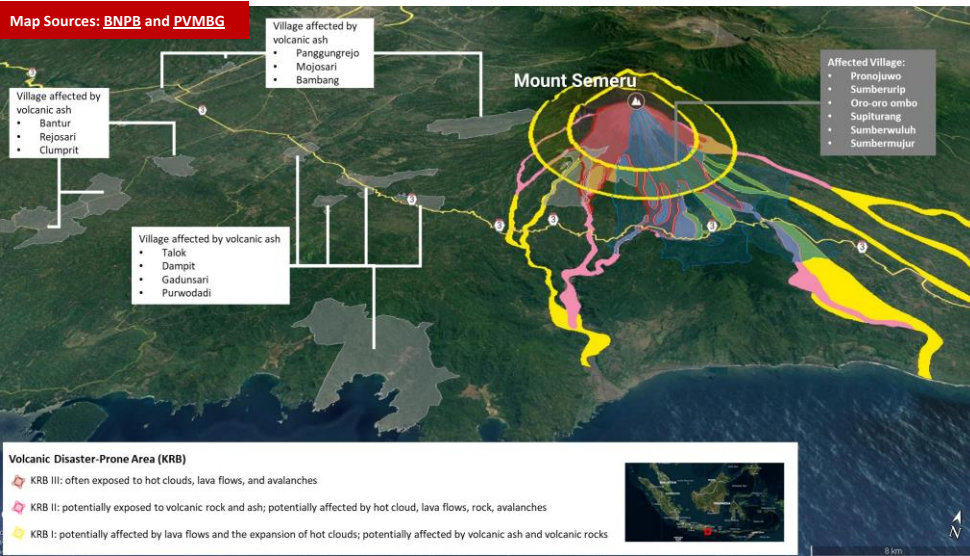


TUESDAY  
07 DEC 2021  
1230 HRS UTC +7

# SEMERU VOLCANO ERUPTION INDONESIA FLASH UPDATE #2



ONE ASEAN ONE RESPONSE



● **OVERVIEW:** On 4 Dec 2021, volcanic activity for Mount Semeru was recorded on a seismograph with a maximum amplitude of 25 mm and a duration of 5160 seconds. Mount Semeru remains on Alert Level II according to Pusat Vulkanologi dan Mitigasi Bencana Geologi ([PVMBG](#)). On 1700 HRS UTC+7, volcanic dust was detected heading towards Southwest at a speed of 60-80 km/h as observed by the EWS BMKG Juanda.

● **IMPACTS:** Badan Nasional Penanggulangan Bencana ([BNPB](#)) has recorded the following:

- 34 deaths, 169 injuries, 17 missing people, 3,697 displaced**, and corrected the identified **people affected—5,205** in Lumajang Regency (Pronojiwo and Candipuro Sub-districts) and Malang Regency (Jabung Sub-district) in East Java Province due to the eruption of Mount Semeru.
- Volcanic material reportedly reached the following districts: Ampelgading, Tirtoyudo, Pagelaran, Wajak, Kepanjen, Dampit, Bantur, and Turen.
- 24 school units** have been affected and further data collection is underway.
- 2,970 houses damaged** (still in data collection), **13 affected public facilities**, bridge, access roads to Pronojiwo and Candipuro districts.

● **RESPONSE:**

- Emergency Management** – responders (agencies, institutions, etc.) are present in the regency; Aid is directly dropped off at the evacuation locations at the existing village hall; **Emergency Response Status** has been established by the head of the regency for 30 days (4 Dec 2021 to 3 Jan 2022). Emergency Response Command was also established and is commanded by the Military District Commander 0821 Lumajang, Deputy Commander I: Commander of the 527th Infantry Battalion, Deputy Commander II: Head of the Lumajang Resort Police.

- Health** – all district health centres are on alert and are ready to accept victims; Provincial Health Office East Java to conduct a rapid health assessment of the sector to find out urgent needs at the disaster site. The East Java Regional Health Crisis Center has been mobilised.
- Search and Rescue** – evacuation are still underway; BNPB has prepared 3 heli units for search and rescue.

- Logistics** – BNPB Assistance worth USD 79.7K (2000 pcs of blanket, 1,374 food packs, 1,377 side dish packs, 20,000 pcs KF 94 masks, 900 pcs mattress, 2 sets of refugee tents; BPBD East Java sent assistance, equipment, and operational cars; the health crisis centre has also provided 20,000 pcs surgical mask, 20,000 pcs children's mask, 10,000 pcs cloth mask, 1,600 pcs N95 mask, and other medical supplies; the Provincial Health Office and Health Crisis Centre East Java have also sent medical equipment support; Public kitchens have been established; The PMI Task Force sent hygiene kits, beddings, and masks; the East Java Regional Police Unit sent food (rice, noodles, oil, water), toiletries, masks, snacks, and milk.

- Public Works** – deploy resources and personnel to clear the affected road networks and provide equipment support
- Public Communication** – BNPB and BPBD East Java to support satellite communication and mobile communication

● **URGENT NEEDS:** Deputy Regent of Lumajang identified the need for aerial monitoring; preparation of evacuation centres, public kitchens, and vehicles for relief item distribution.

● The AHA Centre will continue to monitor for further developments and issue necessary updates.

## KEY FIGURES

Disclosure(s): Estimations are based on data reported/confirmed by National Disaster Management Organisations of the respective ASEAN Member State (Badan Nasional Penanggulangan Bencana) and other verified sources

