



ONE ASEAN
ONE RESPONSE

WEEKLY DISASTER UPDATE

Week 1
03 – 09 Jan 2022

- ahacentre.org
- ahacentre
- @ahacentre
- @ahacentre

The AHA Centre, GRAHA BNPB 13th floor,
Jl. Raya Pramuka Kav. 38, East Jakarta 13120 Indonesia

SOURCES

ASEAN Disaster Monitoring & Response System (DMRS);
ASEAN Specialised Meteorological Centre (ASMC); Joint
Typhoon Warning Centre (JTWC);

Indonesia: BNPB, BMKG, PVMBG;
Malaysia: NADMA;
Philippines: PHIVOLCS;

Various news agencies.

DISCLAIMER

The AHA Centre was established in November 2011 by the
Association of Southeast Asian Nations (ASEAN) Member
States to facilitate cooperation and coordination among
Member States, relevant agencies of the United Nations
and international organisations in disaster management and
emergency response.

This update consists of significant natural disaster events
that occurred in ASEAN Member States – Brunei
Darussalam, Cambodia, Indonesia, Lao PDR, Malaysia,
Myanmar, Philippines, Singapore, Thailand, and Viet Nam.
The disasters recorded include Drought, Flood, Earthquake,
Tsunami, Volcano, Wind, Landslide, and Storm.

The use of boundaries, geographic names, related
information, and potential considerations for response are
for references, not warranted to be error-free or implying
official endorsement from ASEAN Member States.

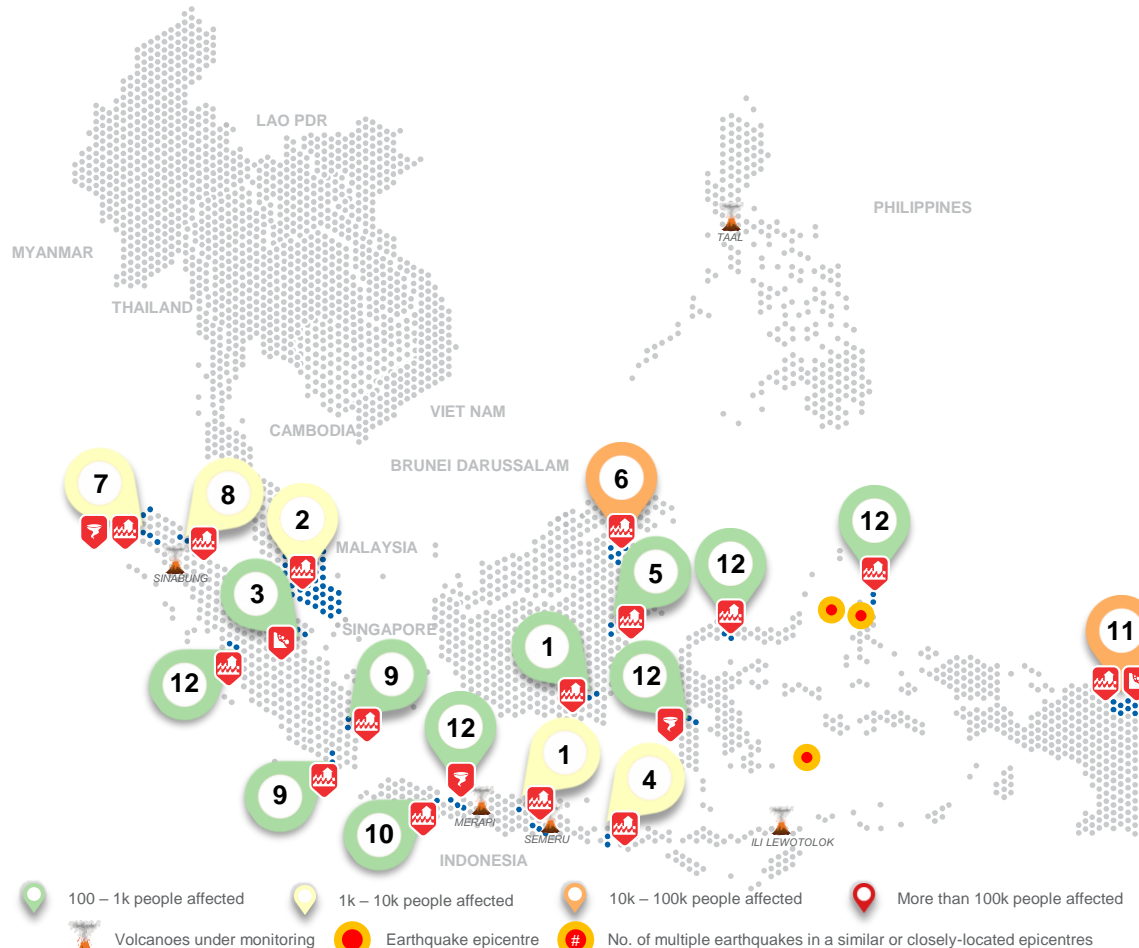
© 2022 AHA Centre.
All rights reserved.

For inquiries, comments, and/or suggestions,
you may reach us through dma@ahacentre.org

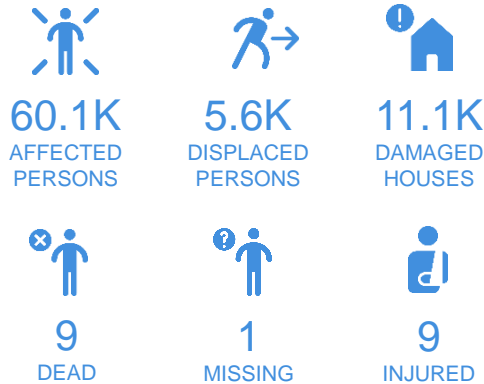


You are receiving this email because you are
registered in our distribution list.

SCAN TO SUBSCRIBE



REGIONAL TALLY



Note: Estimations are based on data reported/confirmed by National
Disaster Management Organisations of each respective ASEAN
Member State and other verified sources

REGIONAL SUMMARY:

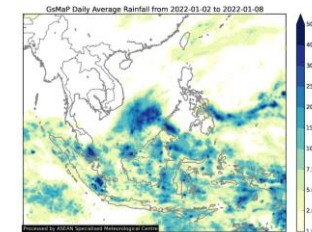
For the first (1st) week of 2022, a total of 30 disasters (22 floods, 3 landslides, and 5 wind-related) affected the region. Indonesia and Malaysia have reportedly been affected. Heavy rainfall has caused flooding, rain-induced landslides, and tornado in Sumatra, Java, Nusa Tenggara, Kalimantan, Sulawesi, Maluku, and Papua as reported by Indonesia's Badan Nasional Penanggulangan Bencana ([BNPB](#)). For Malaysia, floods were reported by Agensi Pengurusan Bencana Negara ([NADMA](#)) in Melaka, Johor, and Pahang.

HIGHLIGHT:

According to [BNPB](#), prolonged heavy rainfall caused flooding and landslides in Jayapura City in the province of Papua, Indonesia. These events have resulted in 7 deaths, 9 injured, 1.9K families (7K persons) affected, 45 families (248 persons) displaced, and damages to 1.9K houses, 6 worship places, 6 educational facilities, 1 health facility, and 1 office. BPBD of Jayapura City has coordinated with related agencies to conduct rapid assessments, field monitoring, and establish a public kitchen. Emergency Response Status has been established by the head of Jayapura City for 14 days (07 - 20 Jan 2022). [BNPB](#) has sent an emergency response team (TRC) and handed over 17.5K USD worth of assistance to support the governments of Jayapura City.

Meanwhile in Nunukan Regency (North Kalimantan), flooding on 4 Jan has affected 2.2K families (15K persons), and damaged 1.4K houses, and 22 public facilities. BPBD of Nunukan Regency has coordinated with related agencies to conduct rapid assessments and provide logistic support to the affected people. Emergency Response Status has been established by the head of Nunukan Regency for 30 days (04 Jan – 02 Feb 2022). Lastly, flooding in Jember Regency, East Java on 9 Jan, resulted in 440 families (1.6K persons) affected, 2 deaths, 1 missing person, damages to 440 houses, 3 worship places, and 2 business properties. Local disaster management agencies are continuously monitoring, assessing, providing logistical support, and actively responding to the situation.

HYDRO-METEO-CLIMATOLOGICAL:



For the past week, data from the ASEAN Specialised Meteorological Centre ([ASMC](#)) showed high 7-day average rainfall spreading across Papua, Sulawesi, Kalimantan, and southern parts of Sumatra, and northern parts of west Java, Indonesia; and Sarawak and Peninsular Malaysia. As of reporting, Tropical Cyclone Cody (05P) and Tiffany (06P) is located outside the ASEAN Region and forecasted not to directly impact the ASEAN Region ([JTWC](#), [ASEAN DMRS](#)).

GEOPHYSICAL:

Three (3) significant earthquakes (M_w≥5.0) were recorded in the region by Indonesia's Badan Meteorologi Klimatologi dan Geofisika ([BMKG](#)), Mount Semeru (alert level III) and Ili Lewotolok (alert level III) in Indonesia, and Mount Taal (alert level 2), and Kanlaon (alert level 1) in the Philippines reported recent volcanic activity according to Pusat Vulkanologi dan Mitigasi Bencana Geologi ([PVMBG](#)) and the Philippine Institute of Volcanology and Seismology ([PHIVOLCS](#)).

OUTLOOK:

According to the ASEAN Specialised Meteorological Centre ([ASMC](#)), for the coming week, wetter conditions are expected over central parts of the Maritime Continent; Drier conditions are predicted over Malay Peninsula, southern Viet Nam, and much of the northern Philippines and surrounding area. For the regional assessment of extremes, there is a small increase in chance for a very heavy rainfall event to occur in Western Borneo and Java; small increase in chance for extended dry conditions to occur in southern Thailand, southern Viet Nam, and northern Philippines; moderate increase in chance for extreme hot conditions to occur in the parts of Myanmar. La Niña conditions are still present in the Pacific. At the seasonal timescale, La Niña events tend to bring wetter conditions to much of the ASEAN region.