



ONE ASEAN
ONE RESPONSE

WEEKLY DISASTER UPDATE

Week 2
10 - 16 Jan 2022

- ahacentre.org
- ahacentre
- @ahacentre
- @ahacentre

The AHA Centre, GRAHA BNPB 13th floor,
Jl. Raya Pramuka Kav. 98, East Jakarta 13120 Indonesia

SOURCES

ASEAN Disaster Monitoring & Response System (DMRS);
ASEAN Specialised Meteorological Centre (ASMC); Joint
Typhoon Warning Centre (JTWC)

Indonesia: BNPB, BMKG, PVMBG;
Philippines: NDRRMC, PHIVOLCS;

Various news agencies

DISCLAIMER

The AHA Centre was established in November 2011 by the
Association of Southeast Asian Nations (ASEAN) Member
States to facilitate cooperation and coordination among
Member States, relevant agencies of the United Nations
and international organisations in disaster management and
emergency response.

This update consists of significant natural disaster events
that occurred in ASEAN Member States – Brunei
Darussalam, Cambodia, Indonesia, Lao PDR, Malaysia,
Myanmar, Philippines, Singapore, Thailand, and Viet Nam.
The disasters recorded include Drought, Flood, Earthquake,
Tsunami, Volcano, Wind, Landslide, and Storm.

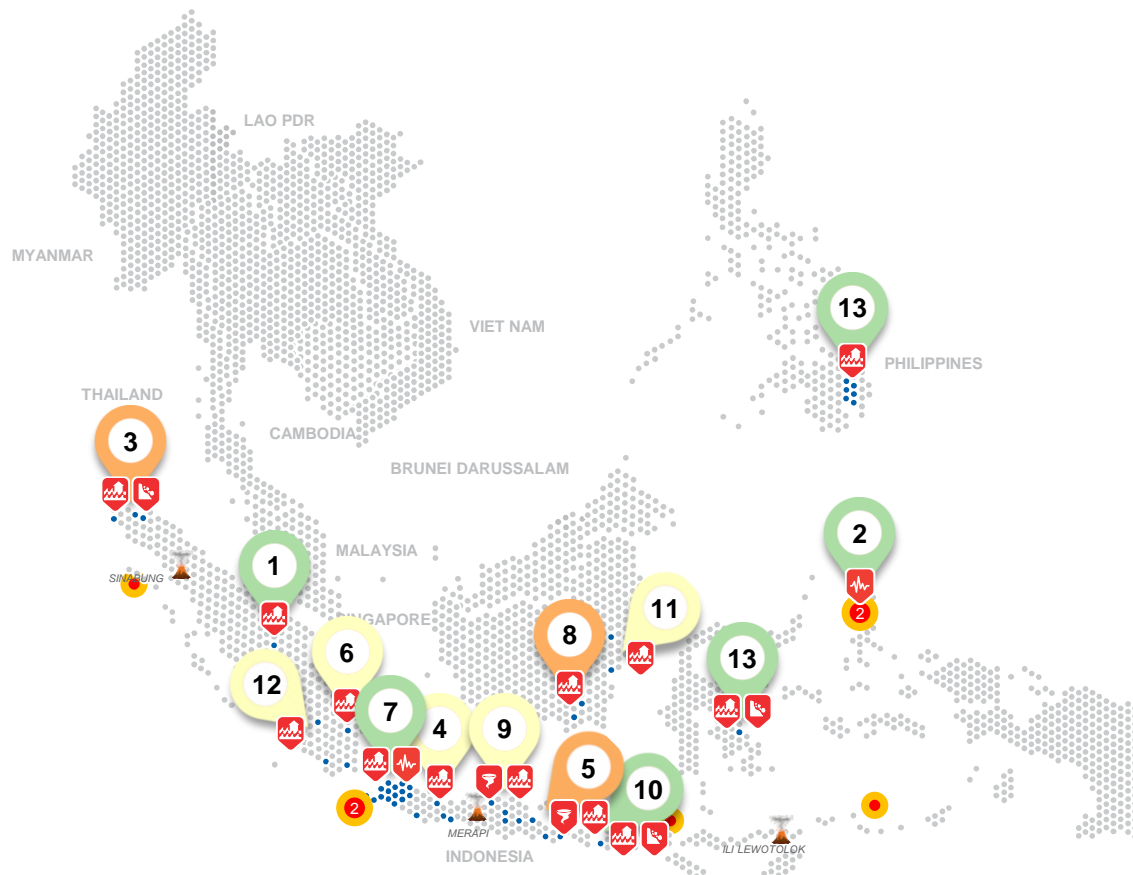
The use of boundaries, geographic names, related
information, and potential considerations for response are
for references, not warranted to be error-free or implying
official endorsement from ASEAN Member States.

© 2022 AHA Centre.
All rights reserved.

For inquiries, comments, and/or suggestions,
you may reach us through dma@ahacentre.org

You are receiving this email because you are
registered in our distribution list.

SCAN TO SUBSCRIBE



REGIONAL TALLY



Note: Estimations are based on data reported/confirmed by National
Disaster Management Organisations of each respective ASEAN
Member State and other verified sources

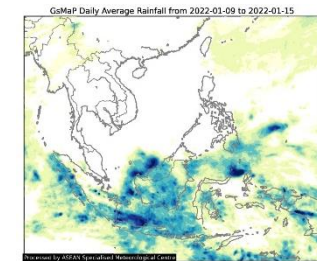
REGIONAL SUMMARY:

For the second week of 2022, a total of 36 disasters (24 floods, 4 landslides, 6 wind-related, 2 earthquakes) affected the region. Indonesia and the Philippines have reportedly been affected. Rain-induced landslides, several localised high-intensity rainfall that caused rivers to overflow resulting in floods, strong winds and a tornado were reported by Indonesia's Badan Nasional Penanggulangan Bencana (BNPB). The National Disaster Risk Reduction and Management Council (NDRRMC) reported that the shear line over Davao Region (where cold Northeast Monsoon and warm equatorial winds meet) caused light to moderate rains and resulted in flooding in Davao de Oro. According to the ASEAN Specialised Meteorological Centre (ASMC), La Niña conditions are now currently present in the Pacific. At the seasonal timescale, La Niña events bring wetter conditions to much of the ASEAN region.

HIGHLIGHT:

According to BNPB, from 10-13 Jan, prolonged heavy rain has caused flooding in Aceh Jaya, Pidie Jaya, and Bireun Regencies. The heavy rainfall has also caused a landslide in Pidie Jaya and the overflowing of rivers in Bireun. In Aceh Jaya, 299 families (1,058 persons) and 299 houses were affected by the flooding. In Pidie Jaya, the flooding and landslide affected 2,737 families (10,541 persons), 2,737 houses, and damaged 6 roads. For Bireun, 897 families (2,549 persons) were affected, 500 people were displaced, and 897 houses were affected by the flooding caused by the overflowing of rivers in the regency. Local disaster management agencies coordinated with relevant authorities and agencies to conduct necessary monitoring, assessments, and other actions in response to the disasters in the regencies.

HYDRO-METEO-CLIMATOLOGICAL:



For the past week, data from the ASEAN Specialised Meteorological Centre (ASMC) showed relatively high 7-day average rainfall across the western coastline of Sumatra, the island of Java, Kalimantan, northern Sulawesi, and Nusa Tenggara islands of Indonesia as well as Eastern Malaysia. Noticeably low 7-day average rainfall can be observed for Mainland Southeast Asia. As of reporting, there are no tropical cyclone advisories (JTWC).

GEOPHYSICAL:

Seven (7) significant earthquakes (M≥5.0) were recorded in the region by Indonesia's Badan Meteorologi Klimatologi dan Geofisika (BMKG). Mount Semeru and Ili Lewotolok in Indonesia (Alert Level III), Taal Volcano (Alert Level 2) and Mount Kanlaon (Alert Level 1) reported recent volcanic activity according to Pusat Vulkanologi dan Mitigasi Bencana Geologi (PVMBG) and the Philippine Institute of Volcanology and Seismology (PHIVOLCS).

OUTLOOK:

According to the ASMC, for the coming week, wetter conditions are expected over the region around Java, Indonesia and central and southern Philippines. Drier conditions are expected in the Malay Peninsula and Southern Viet Nam and much of Northern Philippines and the surrounding area. For the regional assessment of extremes, there is a small increase in chance for a very heavy rainfall event to occur in Central and Southern Philippines.