



ONE ASEAN  
ONE RESPONSE

# WEEKLY DISASTER UPDATE

Week 52  
27 Dec 2021 – 2 Jan  
2022



The AHA Centre, GRAHA BNPB 13th floor,  
Jl. Raya Pramuka Kav. 38, East Jakarta 13120 Indonesia

## SOURCES

ASEAN Disaster Monitoring & Response System (DMRS);  
ASEAN Specialised Meteorological Centre (ASMC); Joint  
Typhoon Warning Centre (JTWC)

Indonesia: BNPB, BMKG, PVMBG;  
Malaysia: NADMA;  
Philippines: NDRRMC, PHIVOLCS;  
Thailand: DDPM

Various news agencies

## DISCLAIMER

The AHA Centre was established in November 2011 by the  
Association of Southeast Asian Nations (ASEAN) Member  
States to facilitate cooperation and coordination among  
Member States; relevant agencies of the United Nations  
and international organisations in disaster management and  
emergency response.

This update consists of significant natural disaster events that  
occurred in ASEAN Member States – Brunei  
Darussalam, Cambodia, Indonesia, Lao PDR, Malaysia,  
Myanmar, Philippines, Singapore, Thailand, and Viet Nam.  
The disasters recorded include Drought, Flood, Earthquake,  
Tsunami, Volcano, Wind, Landslide, and Storm.

The use of boundaries, geographic names, related  
information, and potential considerations for response are  
for references, not warranted to be error-free or implying  
official endorsement from ASEAN Member States.

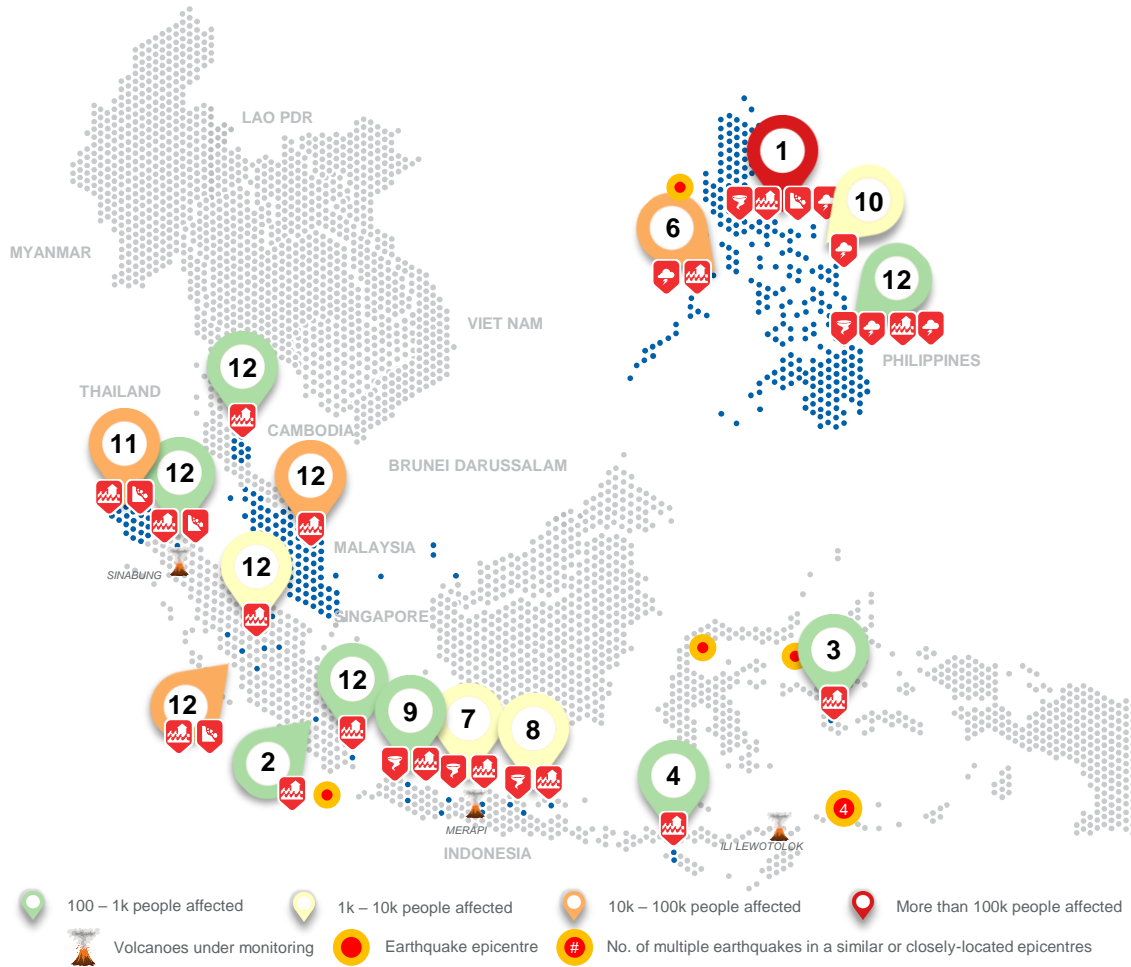
© 2022 AHA Centre.  
All rights reserved.

For inquiries, comments, and/or suggestions,  
you may reach us through [dms@ahacentre.org](mailto:dms@ahacentre.org)



You are receiving this email because you are  
registered in our distribution list.

SCAN TO SUBSCRIBE



## REGIONAL TALLY



Note: Estimations are based on data reported/confirmed by National  
Disaster Management Organisations of each respective ASEAN  
Member State and other verified sources

**01 Philippines, Flooding, Landslides, Storms, and Winds in Regions II, V, VI, VII, VIII, IX, X, XI, XII, CALABARZON, MIMAROPA, CARAGA, BARMIM, and NCR (TC RAI) from week 50, updated as of 3 January 2022, 0700 HRS UTC+7**  
16 Dec 2021

**02 Indonesia, Flooding in Muara Enim, Penukal Alab Lematang Ilir, and Ogan Komering Ulu (South Sumatra)**  
27, 30 Dec 2021

**03 Indonesia, Flooding in Buru Regency (Maluku)**  
27 Dec 2021

**04 Indonesia, Flooding in West Sumba, Central Sumba (East Nusa Tenggara)**  
27, 27 Dec 2021

**05 Indonesia, Flooding in Indragiri Hulu, Rokan Hilir, and Rokan Hulu (Riau)**  
27 Dec 2021, 1 Jan 2022

**06 Philippines, Storms and Floods in MIMAROPA (Region IV-A)**  
27 Dec 2021

**07 Indonesia, Strong Wind in Magelang, Cilacap and Flooding in Tegal, Semarang (Central Java)**  
27, 28, 29, 31 Dec 2021

**08 Indonesia, Flooding in Bojonegoro and Pamekasan and Strong Wind in Sidoarjo (East Java)**  
27, 31, 31 Dec 2021

**09 Indonesia, Flooding in Karawang and Bandung Regency (West Java)**  
28, 30 Dec 2021

**10 Philippines, Storms, Flooding, and Landslide in Bicol Region (Region V)**  
29 Dec 2021

**11 Indonesia, Flooding in East Aceh, Langsa City (2), North Aceh (2), and Flooding and Landslide in Aceh Tamiang (Aceh)**  
30, 31, 31 Dec 2021, 1, 2, 2 Jan 2022

**12 Other Events: Thailand – Nakhon Si Thammarat (30-12); Indonesia – East Lampung (30-12), Langkat (31-12), Padang Lawas (31-12), Limapuluh Kota (1-1), Bungo (1-1); Malaysia – Selangor, Negeri Sembilan, Meleka, Johor, Pahang, Terangganu, Sabah (31-12); Philippines – Eastern Visayas (1-1)**

## REGIONAL SUMMARY:

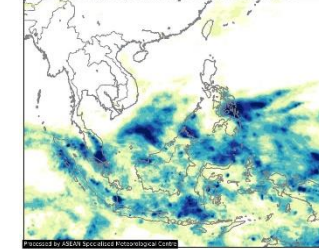
For the last week of 2021, a total of 41 disasters (29 floods, 5 landslides, 4 wind-related, 3 storms) affected the region. Indonesia, Malaysia, the Philippines, and Thailand have reportedly been affected. Rain-induced landslides, several localised high-intensity rainfall that caused rivers to overflow resulting in floods, and strong winds were reported by Indonesia's Badan Nasional Penanggulangan Bencana ([BNPB](#)). Flooding was reported in multiple areas in Malaysia by the Agensi Pengurusan Bencana Negara ([NADMA](#)). The National Disaster Risk Reduction and Management Council ([NDRRMC](#)) reported that storms, flooding, and landslide affected MIMAROPA, Bicol, and Eastern Visayas Regions. Lastly, Thailand's Department of Disaster Prevention Mitigation ([DDPM](#)) reported flooding to have affected Nakhon Si Thammarat.

## HIGHLIGHT:

According to [BNPB](#), from the 30<sup>th</sup> of December to the 2<sup>nd</sup> of January heavy rainfall and the overflowing of Krueg Peutoe, Krueg Keureuto, Sepanjang, and Langsa Rivers have caused flooding and landslides in East Aceh, North Aceh, Langsa City, and Aceh Tamiang in the province of Aceh, Indonesia. These events have resulted in 1 death, 67,871 persons affected, 19,947 displaced, 17,646 damaged houses. Evacuation was carried out by the regional disaster management agencies in Aceh (BPBD). The BPBD has also reported that evacuees are already in safe and good condition. Weather forecast for Aceh Province in the coming week indicates potential heavy rain which can be accompanied by lightning and strong winds. Currently, some areas are still experiencing heavy rains from time to time. Local government and local communities are advised to remain alert considering the current condition and the weather forecast.

## HYDRO-METEO-CLIMATOLOGICAL:

GMAP Daily Average Rainfall from 2021-12-27 to 2022-01-02



For the past week, data from the ASEAN Specialised Meteorological Centre ([ASMC](#)) showed noticeably high 7-day average rainfall in Eastern Visayas, Northern Mindanao, and Palawan, Philippines, Northern Borneo of Eastern Malaysia, Peninsular Malaysia, and the Southern tip of Thailand, and relatively high across Sumatra, Kalimantan, Sulawesi, Papua of Indonesia. As of reporting, there are no tropical cyclone advisories ([JTWC](#)).

## GEOPHYSICAL:

Eight (8) significant earthquakes ( $M \geq 5.0$ ) were recorded in the region by Indonesia's Badan Meteorologi Klimatologi dan Geofisika ([BMKG](#)). Mount Semeru in Indonesia (Alert Level II), Taal Volcano (Alert Level 2) and Mount Kanlaon (Alert Level 1) reported recent volcanic activity according to Pusat Vulkanologi dan Mitigasi Bencana Geologi ([PVMBG](#)) and the Philippine Institute of Volcanology and Seismology ([PHIVOLCS](#)).

## OUTLOOK:

According to the [ASMC](#), for the coming week, cooler conditions over Central and Eastern Mainland Southeast Asia are expected to ease. For the regional assessment of extremes, there is a low chance for a very heavy rainfall event, extended dry conditions, and extreme hot conditions with. La Niña conditions are present in the Pacific and at a seasonal timescale, brings wetter conditions to much of the ASEAN region.