



ONE ASEAN
ONE RESPONSE

WEEKLY DISASTER UPDATE

Week 11
14 – 20 March 2022

- ahacentre.org
- ahacentre
- @ahacentre
- @ahacentre

The AHA Centre, GRAHA BNPB 13th floor,
Jl. Raya Pramuka Kav. 38, East Jakarta 13120 Indonesia

SOURCES

ASEAN Disaster Monitoring & Response System (DMRS);
ASEAN Specialised Meteorological Centre (ASMC); Joint
Typhoon Warning Centre (JTWC);

Indonesia: BNPB, BMKG, PVMBG;
Malaysia: NADMA;
Myanmar: DMH;
Philippines: PHIVOLCS;
Thailand: DDPM;
Viet Nam: VNDMA;

Various news agencies.

DISCLAIMER

The AHA Centre was established in November 2011 by the
Association of Southeast Asian Nations (ASEAN) Member
States to facilitate cooperation and coordination among
Member States, relevant agencies of the United Nations
and international organisations in disaster management and
emergency response.

This update consists of significant natural disaster events
that occurred in ASEAN Member States – Brunei
Darussalam, Cambodia, Indonesia, Lao PDR, Malaysia,
Myanmar, Philippines, Singapore, Thailand, and Viet Nam.
The disasters recorded include Drought, Flood, Earthquake,
Tsunami, Volcano, Wind, Landslide, and Storm.

The use of boundaries, geographic names, related
information, and potential considerations for response are
for references, not warranted to be error-free or implying
official endorsement from ASEAN Member States.

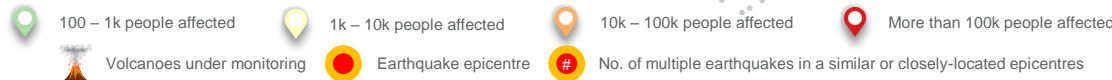
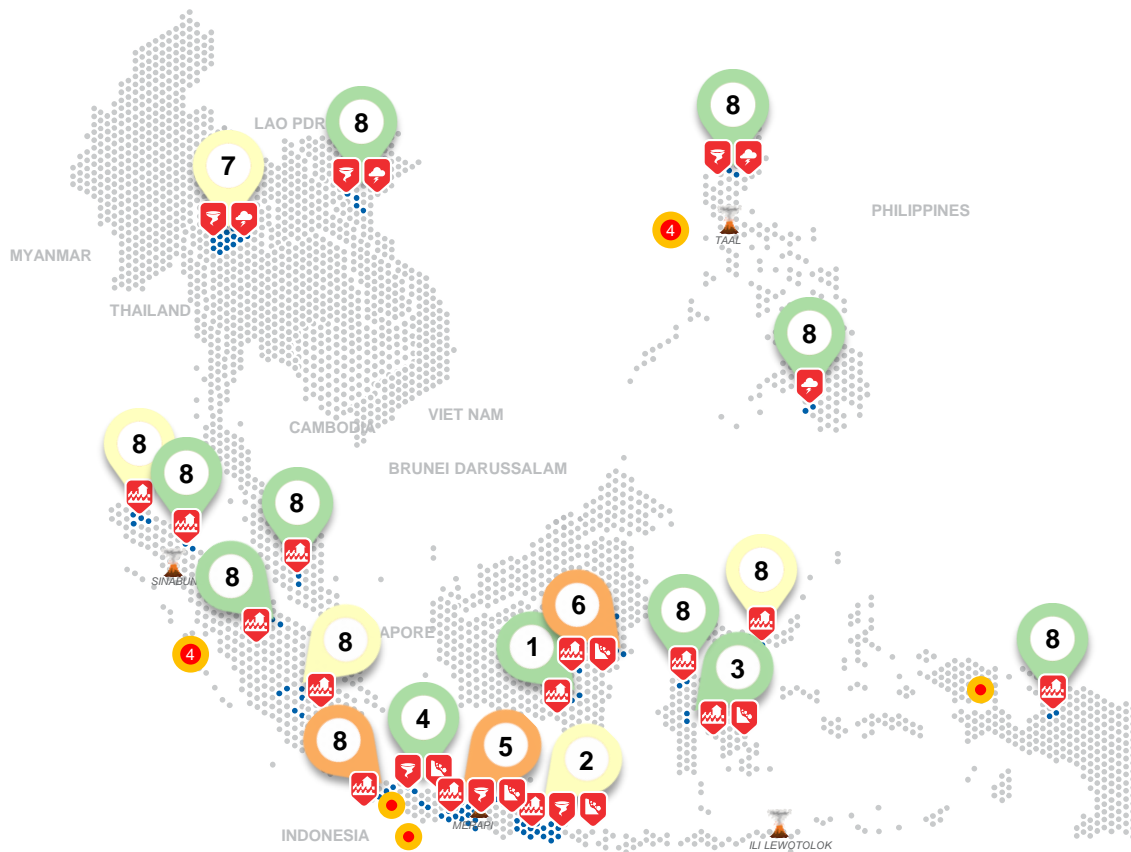
© 2022 AHA Centre.
All rights reserved.

For inquiries, comments, and/or suggestions,
you may reach us through dma@ahacentre.org



You are receiving this email because you are
registered in our distribution list.

SCAN TO SUBSCRIBE



REGIONAL TALLY



Note: Estimations are based on data reported/confirmed by National
Disaster Management Organisations of each respective ASEAN
Member State and other verified sources

01 Indonesia, Flooding in [Tapin \(2\)](#) and [Tabalong](#) Regency (South Kalimantan)
14, 16, 18 Mar 2022

02 Indonesia, Flooding, Landslide, and Strong Wind in [Jember](#), [Gresik](#), [Malang](#), [Lumajang](#), [Blitar](#), [Magetan](#) and [Bojonegoro](#) Regency (East Java)
14, 14, 14, 14, 15, 16, 19 Mar 2022

03 Indonesia, Flooding and Landslide in [Luwu](#) Regency (South Sulawesi)
14 Mar 2022

04 Indonesia, Strong Wind in [Karawang](#) and Landslide in [Sumedang](#) Regency (West Java)
14, 14 Mar 2022

05 Indonesia, Flooding, Landslide and Strong Wind in [Kebumen](#), [Banyumas](#), [Purworejo](#), [Grobogan](#), [Cilacap](#), [Sragen](#), and [Pemalang](#) Regency (Central Java)
14, 15, 15, 15, 15, 18, 19 Mar 2022

06 Indonesia, Flooding and Landslide in [Balikpapan](#) City and Flooding in [East Kutai](#) Regency (East Kalimantan)
16, 18 Mar 2022

07 Thailand, Storms and Winds in [Northern and Northeastern](#) Regions
16 Mar 2022

08 Others: Indonesia – [Musi Rawas](#) (16-3), [Bengkalis](#) (16-3), [Bireuen](#) (16-3), [West Jakarta](#) (17-3), [South Tangerang](#) (17-3), [Waropen](#) (17-3), [Sigi](#) (17-3), [Medan](#) (17-3), [North Aceh](#) (17-3), [Prabumulih](#) (18-3), [Musi Rawas](#) (18-3), [Muara Enim](#) (19-3), [Pandeglang](#) (19-3), [Prabumulih](#) (19-3), [Bone Bolango](#) (19-3), [Gorontalo](#) (19-3); Malaysia – [Bentong](#) (18-3); Philippines – [Maguidanao](#) (16-3), [Nueva Vizcaya](#) (18-3); Viet Nam – [Ky Son](#), [Tuong Duong](#), and [Con Cuong](#) (17-3);

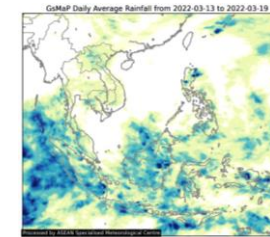
REGIONAL SUMMARY:

For the eleventh week of 2022, a total of 52 disasters (35 floods, 6 landslides, 6 storms, and 7 wind-related) affected the region. Indonesia, Malaysia, the Philippines, Thailand, and Viet Nam have reportedly been affected. Heavy rainfall and overflowing of the rivers have caused flooding, rain-induced landslides, and wind-related events over Sumatra, Java, Kalimantan, Sulawesi, and Papua as reported by Indonesia's Badan Nasional Penanggulangan Bencana ([BNPB](#)). For Malaysia, floods were reported by Agensi Pengurusan Bencana Negara ([NADMA](#)) in Pahang State. The Thailand's Department of Disaster Prevention and Mitigation ([DDPM](#)) reported storms and winds in the Northern and Northeastern Regions of Thailand. The Viet Nam Disaster Management Authority ([VNDMA](#)) reported storms and winds in Nghe An Province of Viet Nam.

HIGHLIGHT:

According to [BNPB](#), heavy rainfall, strong wind, and the overflowing of the rivers since 14 March have caused flooding, rain-induced landslides, and wind-related events in Pandeglang Regency and South Tangerang City in Banten Province, West Jakarta City in DKI Jakarta Province, Sumedang and Karawang Regency in West Java Province, Pemalang, Sragen, Cilacap, Grobogan, Purworejo, Banyumas, and Kebumen Regency in Central Java Province, and Bojonegoro, Magetan, Blitar, Lumajang, Malang, Gresik, and Jember Regency in East Java Province. In total, 3 persons have been injured, 21,6K families (84.1K persons) have been affected, and 5.1K persons have been displaced in Banten, DKI Jakarta, West Java, Central Java, and East Java Provinces. Reports of damages include 15.6K houses, 3 bridges, 7 roads, 23 schools, 9 public facilities, 51 worship places, and 1.7K ha of agriculture areas. Meanwhile, in East Kutai Regency (East Kalimantan), flooding caused by heavy rainfall and overflowing of Sangatta River on 18 March cost the life of 1 individual, affected 5.3K families (16.9K persons), displaced 2K persons, and damaged 2.5K houses. Local disaster management agencies have carried out necessary actions and continue to monitor and assess the situation.

HYDRO-METEO-CLIMATOLOGICAL:



For the past week, data from the ASEAN Specialised Meteorological Centre ([ASMC](#)) showed high 7-day average rainfall spreading across Sumatra, Java, Kalimantan, Sulawesi, and Papua in Indonesia; Sarawak in Malaysia; and Luzon Island of the Philippines. As of reporting, Tropical Disturbance INVEST 91B (will be named [ASAN](#)) is located approximately 685 Km South-Southwest of Yangon, Myanmar. It is forecasted to move northward over the next 48 hours with possible landfall along the western coast of Myanmar. Tropical Cyclone CHARLOTTE and Tropical Disturbance INVEST 94S is forecasted to not directly impact ASEAN Region ([BMKG](#), [DMH](#), [JTWC](#)).

GEOPHYSICAL:

Eleven (11) significant earthquakes (M_w≥5.0) were recorded in the region by Indonesia's [BMKG](#) and the Philippine Institute of Volcanology and Seismology ([PHIVOLCS](#)). Mount Semeru (alert level III) in Indonesia, and Mount Taal (alert level 2), and Kanlaon (alert level 1) in the Philippines reported recent volcanic activity according to Pusat Vulkanologi dan Mitigasi Bencana Geologi ([PVMBG](#)) and [PHIVOLCS](#).

OUTLOOK:

According to the ASEAN Specialised Meteorological Centre ([ASMC](#)), for the coming week, wetter conditions are expected over much of western and central Mainland Southeast Asia, and southeastern parts of the Maritime Continent (highest probability is over Myanmar, Thailand and Lao PDR); drier conditions are expected to develop over Sumatra; warmer conditions are expected over much of the western and central equatorial region. For the regional assessment of extremes, there is a moderate increase in chance for very heavy rainfall event to occur in western and central Mainland Southeast Asia, and southeastern parts of the Maritime Continent; moderate increase in chance in central Sumatra and western Borneo, and very likely in northern half of the Philippines for extreme hot conditions. La Niña conditions are still present in the Pacific but weakening. At the seasonal timescale, La Niña events tend to bring wetter conditions to much of the ASEAN Region.