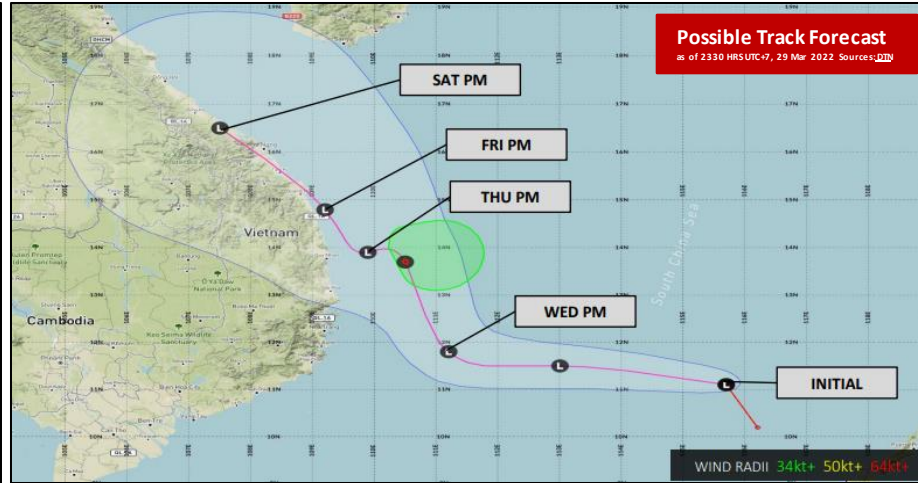
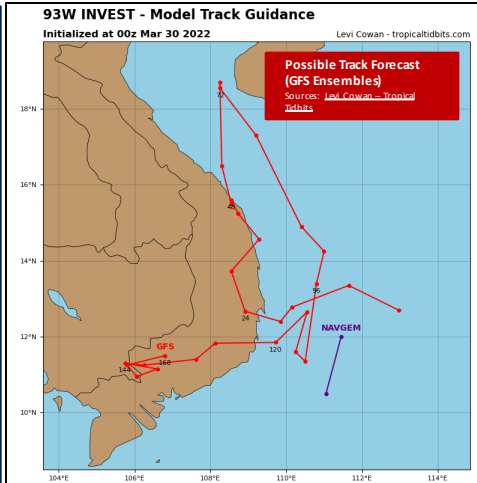
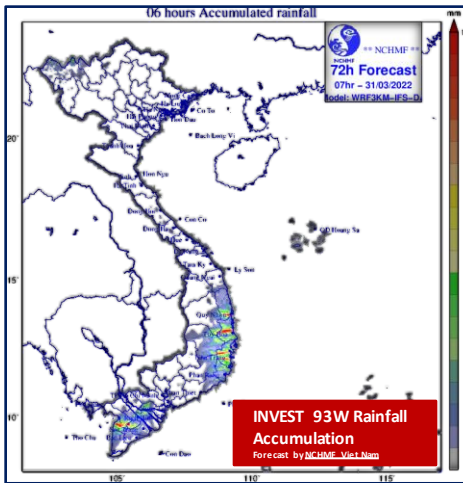


WEDNESDAY
30 MAR 2022
1400 HRS UTC +7

INVEST 93W VIET NAM FLASH UPDATE #1



ONE ASEAN ONE RESPONSE



ESTIMATED EXPOSURE

Disclosure(s): Estimated exposure are based on the ASEAN Disaster Monitoring and Response System (DMRS) and PDC-Global.

POPULATION EXPOSED

35.9 Million ESTIMATED POPULATION EXPOSED

9.47 Million ESTIMATED HOUSEHOLDS EXPOSED

23% 8,101,998 CHILDREN AGE 0-14

70% 25,350,253 ADULTS AGE 15-64

7% 2,520,622 ELDERLY AGE 65+

CAPITAL EXPOSED

\$264 Billion ESTIMATED REPLACEMENT VALUE OF BUILDINGS AND INFRASTRUCTURE

Area	Time	Rainfall Forecast (news broadcast at 0900 HRS UTC+7)
Nghe An	Night of 31 March to 2 April	Mostly 50-100 mm, some over 150 mm
Ha Tinh, Quang Binh	Night of 31 March to 2 April	Mostly 150-250 mm, some over 300 mm
Quang Tri, Thua Thien Hue	Night of 31 March to 2 April	Mostly 200-350 mm, some over 400 mm
Da Nang, Quang Nam, Quang Ngai	31 March to 1 April	Mostly 200-350 mm, some over 400 mm
Binh Dinh, Phu Yen, Khanh Hoa, Central Highlands	Afternoon of 30 March to 1 April	Mostly 100-150 mm, some over 200 mm
Binh Thuan, Ninh Thuan	Afternoon of 30 March to 1 April	Mostly 50-100 mm, some over 100 mm

- **OVERVIEW:** As of 0900 HRS UTC+7, 30 March, an area of convection (**INVEST 93W**) was located near 10.8N 113.2E, approximately 754 km Southeast of Danang, Viet Nam according to Viet Nam's National Centre for Hydro-Meteorological Forecasting ([NCHMF](#)).
- **INTENSITY:** **INVEST 93W** has consolidated over the last 12 hours and surface winds are around 33-43 km/h (18-23 knots) and minimum sea-level pressure near 1005 mb.
- **FORECAST:**
 - **GFS:** show slight intensification to near Tropical Depression (TD) strength just prior to landfall and dissipation over land.
 - **ECMWF:** shows borderline development to near Tropical Depression (TD) near landfall.
 - According to [DTN](#), sustained winds of the **INVEST 93W** remains around 37 km/h (20 knots) and is forecast to continue to work across favorable tropical conditions in the South China Sea. The further development of **INVEST 93W** is still possible over the next 2 days.
 - The potential for the development of a significant tropical cyclone within the next 24 hours is upgraded to HIGH ([JTWC](#)).
- **IMPACTS:** [NCHMF](#) Viet Nam forecasts that 93W will intensify this afternoon (30 March) to April 2 in the Central region and the Central Highlands with the following impacts: moderate to very heavy rains, thunderstorms, possibility of tornadoes, lightning, hail, and strong winds, risk of flash floods and landslides in mountainous areas, and local flooding in low-lying areas and areas along rivers.
- **ADVISORY:** The [NCHMF](#) has issued warnings for local flooding and landslides in Lai Chau, Dien Bien, Son La, Lao Cai, Bac Giang, Long Son, and Quang Ninh provinces; and heavy rain in Central and West Highlands; and river warnings from Quang Binh to Binh Dinh.
- **PREPAREDNESS AND RESPONSE:** The Standing Office of the National Steering Committee for Natural Disaster Prevention and Control has requested the Commanding Committees of disaster Prevention and Control of the provinces and cities to implement the following
 - Close monitoring of warning bulletins, forecasts, and timely information for authorities and people at all levels to proactively prevent and minimise damage;
 - Deploying task force to inspect and assess residential areas along rivers, streams, low-lying areas with high risk of floods, flash floods, landslides to proactively organise relocation and evacuation of people before disaster occurs;
 - Response forces on standby for traffic control, and damage mitigation to agriculture sector;
 - Regular reporting of the situation and direct professional agencies to coordinate with information and communication agencies, especially the grassroots information system to disseminate proper instructions on how to cope with the impacts of the storm and proactively prevent, avoid, and minimise damage;
- The AHA Centre will continue to monitor and issue necessary updates once more information from official sources becomes available.

DATA SOURCES
ASEAN Disaster Monitoring & Response System (DMRS); Pacific Disaster Center (PDC Global); ASEAN Specialised Meteorological Centre (ASMC); Viet Nam: VNDMA, NCHMF
Verified news media agencies.

DISCLAIMER
The AHA Centre was established in November 2011 by the Association of Southeast Asian Nations (ASEAN) Member States to facilitate cooperation and coordination among the Member States, relevant agencies of the United Nations, and international organisations in disaster management and humanitarian assistance.
The use of boundaries, geographic names, related information and potential considerations for response are for reference, not warranted to be error free or implying official endorsement from ASEAN Member States.

© 2022 AHA Centre.
All rights reserved.
You are receiving this email because you are registered in our distribution list.

Our mailing address is:
AHA Centre,
GRAHA BNPB 13th Floor,
Jl. Raya Pramuka Kav. 38,
Jakarta 13120 Indonesia