



ONE ASEAN
ONE RESPONSE

WEEKLY DISASTER UPDATE

Week 20
16 – 22 May 2022

- ahacentre.org
- ahacentre
- @ahacentre
- @ahacentre

The AHA Centre, GRAHA BNPB 13th floor,
Jl. Raya Pramuka Kav. 38, East Jakarta 13120 Indonesia

SOURCES

ASEAN Disaster Monitoring & Response System (DMRS);
ASEAN Specialised Meteorological Centre (ASMC); Joint
Typhoon Warning Centre (JTWC);

Indonesia: BNPB, BMKG, PVMBG;
Philippines: NDRRMC, PAGASA, PHIVOLCS;
Thailand: DDPM;

Various news agencies.

DISCLAIMER

The AHA Centre was established in November 2011 by the
Association of Southeast Asian Nations (ASEAN) Member
States to facilitate cooperation and coordination among
Member States, relevant agencies of the United Nations
and international organisations in disaster management and
emergency response.

This update consists of significant natural disaster events
that occurred in ASEAN Member States – Brunei
Darussalam, Cambodia, Indonesia, Lao PDR, Malaysia,
Myanmar, Philippines, Singapore, Thailand, and Viet Nam.
The disasters recorded include Drought, Flood, Earthquake,
Tsunami, Volcano, Wind, Landslide, and Storm.

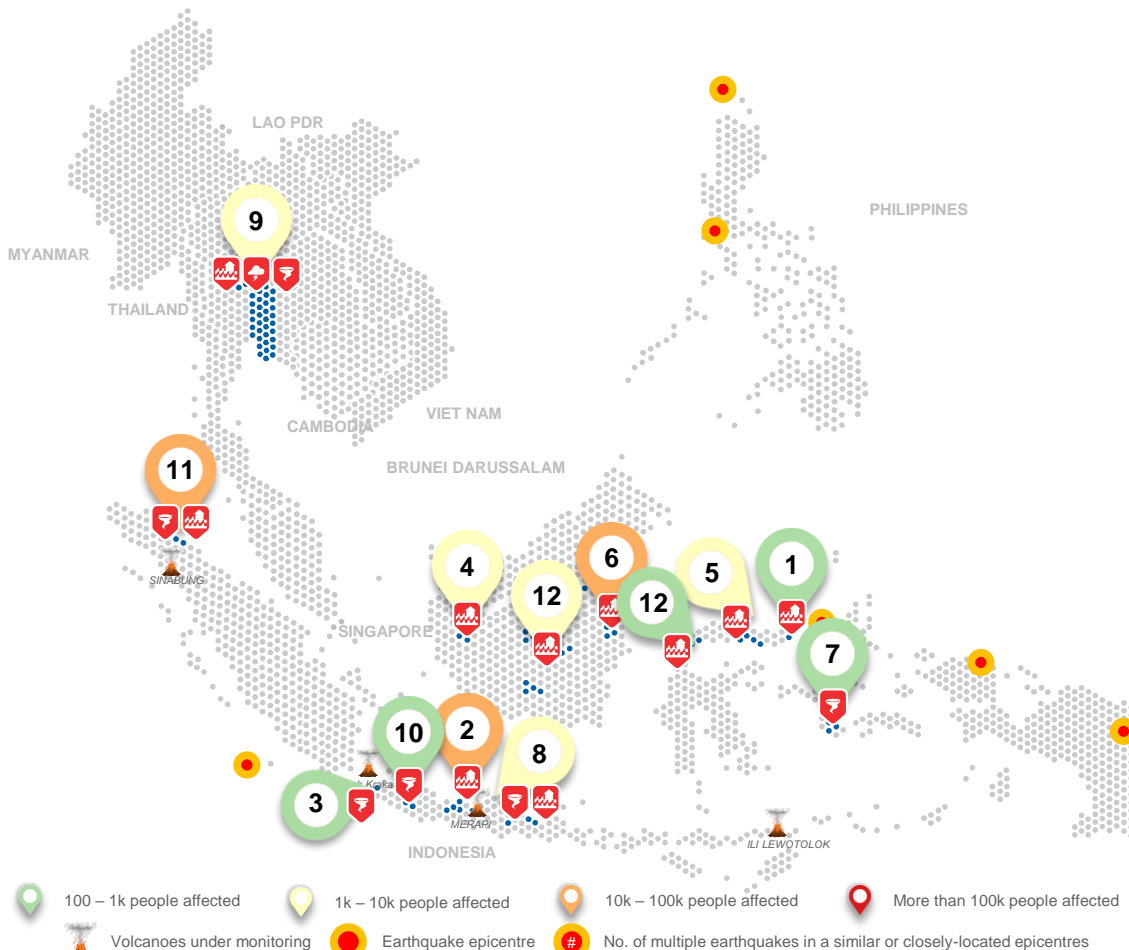
The use of boundaries, geographic names, related
information, and potential considerations for response are
for reference, not warranted to be error-free or implying
official endorsement from ASEAN Member States.

© 2022 AHA Centre.
All rights reserved.

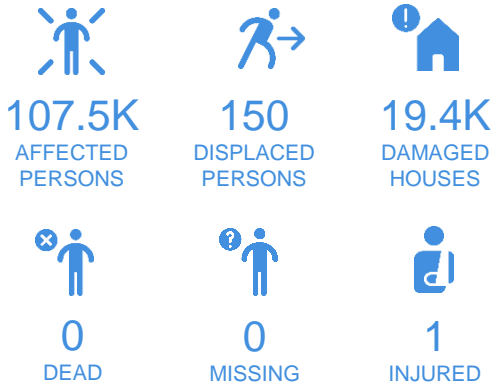
For inquiries, comments, and/or suggestions,
you may reach us through dma@ahacentre.org



SCAN TO SUBSCRIBE



REGIONAL TALLY



Note: Estimations are based on data reported/confirmed by National
Disaster Management Organisations of each respective ASEAN
Member State and other verified sources

- 01 Indonesia, Flooding in [East Bolaang Mongondow Regency \(North Sulawesi\)](#)**
16 May 2022
- 02 Indonesia, Flooding in [Pekalongan City](#), [Kendal](#), and [Pemalang Regency \(Central Java\)](#)**
16, 21, 22 May 2022
- 03 Indonesia, Tornado in [Serang City \(Banten\)](#)**
16 May 2022
- 04 Indonesia, Flooding in [Sekadau Regency \(West Kalimantan\)](#)**
17 May 2022
- 05 Indonesia, Flooding in [Gorontalo Regency \(2\)](#) and [Gorontalo City \(Gorontalo\)](#)**
17, 19, 21 May 2022
- 06 Indonesia, Flooding in [Kutai Kartanegara Regency \(East Kalimantan\)](#)**
18 May 2022
- 07 Indonesia, Tornado in [Buru Regency \(Maluku\)](#)**
18 May 2022
- 08 Indonesia, Flooding and Strong Wind in [Pasuruan City](#), [Blitar](#), and [Pasuruan Regency \(East Java\)](#)**
18, 19, 20 May 2022
- 09 Thailand, [Flooding \(2\)](#), [Storm](#), and [Wind](#) in Northern, Central, Northeastern, and Eastern Region**
18, 18, 20 May 2022
- 10 Indonesia, Tornado in [Bandung Regency \(West Java\)](#)**
19 May 2022
- 11 Indonesia, [Flooding](#) and [Tornado](#) in [Medan City \(North Sumatra\)](#)**
20, 22 May 2022
- 12 Others: Indonesia – [Parigi Moutong \(19-5\)](#), [Murung Raya \(20-5\)](#), [Palangkaraya City \(20-5\)](#), [North Barito \(21-5\)](#), [Malinau \(21-5\)](#),**

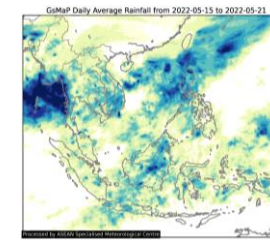
REGIONAL SUMMARY:

For the twentieth week of 2022, a total of 26 disasters (19 floods, 1 storm, and 6 wind-related) affected the region. Indonesia and Thailand have reportedly been affected. Moderate to heavy rainfall, strong wind, high tide in the coastal area, and overflowing of the rivers, a lake, and an irrigation channel have caused flooding and wind-related events were reported by *Badan Nasional Penganggulangan Bencana (BNPB)* over Sumatra, Java, Kalimantan, Sulawesi, and Maluku. According to the Philippine Institute of Vulcanology and Seismology (*PHIVOLCS*) a M6.1 tectonic earthquake occurred at 21 km of Calatagan Town (Batangas) with a depth of 128 km on 22 May at 1040 hrs UTC+7. As of reporting time, no damages nor casualties have been reported by the National Disaster Risk Reduction and Management Council (*NDRRMC*). Lastly, flooding, storms, and wind-related events in the Northern, Northeastern, Eastern, and Central Regions of Thailand were reported by the Department of Disaster Prevention and Mitigation (*DDPM*).

HIGHLIGHT:

According to *BNPB*, moderate to heavy rainfall and the overflowing of the rivers since 17 May have caused flooding in Sekadau Regency (West Kalimantan), Palangkaraya City, Murung Raya, and North Barito Regency (Central Kalimantan), Kutai Kartanegara Regency (East Kalimantan), and Malinau Regency (North Kalimantan). In total, 7.6K families (36.1K persons) have been affected in West, Central, East, and North Kalimantan Provinces. Reports of damages include 2.8K houses, 3 bridges, roads, 15 schools, 6, health facilities, 7 public facilities, and 17 worship places. Meanwhile, in Medan City (North Sumatra), flooding and tornado caused by high tide and extreme weather on 20 and 22 May affected 11.5K families (45.3K persons), injured 2 persons, and damaged 11.5K houses. Local disaster management agencies have carried out necessary actions and continue to monitor, conduct data collection, assess the situation, and provide support and logistics to the affected people.

HYDRO-METEO-CLIMATOLOGICAL:



For the past week, data from the ASEAN Specialised Meteorological Centre (*ASMC*) showed high 7-day average rainfall spreading across Kalimantan in Indonesia; and northern Luzon of the Philippines; and southern Myanmar associated with the Low-Pressure Area over north Andaman Sea. As of reporting, there are no active tropical cyclone advisories in the region. (*JTWC*).

GEOPHYSICAL:

Six (6) significant earthquakes ($M \geq 5.0$) were recorded in the region by Indonesia's *Badan Meteorologi, Klimatologi, dan Geofisika (BMKG)* and *PHIVOLCS*. Mount Ibu (alert level II), Ili Lewotolok (alert level III), Dukono (alert level II), Anak Krakatau (alert level III), and Semeru (alert level III) in Indonesia, and Taal Volcano (alert level 2), and Mount Kanlaon (alert level 1) in the Philippines reported recent volcanic activity according to Pusat Vulkanologi dan Mitigasi Bencana Geologi (*PVMBG*) and *PHIVOLCS*.

OUTLOOK:

According to the ASEAN Specialised Meteorological Centre (*ASMC*), for the coming week, wetter conditions are expected over much of Mainland Southeast Asia; drier conditions are expected over much of the equatorial region; cooler conditions are expected over most of Mainland Southeast Asia; and warmer conditions are expected over the western half of the equatorial region. For the regional assessment of extremes, there is a moderate increase in chance for extreme hot conditions to occur in western Maritime Continent. La Niña conditions are still present in the Pacific. At the seasonal timescale, La Niña events tend to bring wetter conditions to much of the ASEAN region.