



ONE ASEAN
ONE RESPONSE

WEEKLY DISASTER UPDATE

Week 24
13 – 19 June 2022

- ahacentre.org
- ahacentre
- @ahacentre
- @ahacentre

The AHA Centre, GRAHA BNPB 13th floor,
Jl. Raya Pramuka Kav. 38, East Jakarta 13120 Indonesia

SOURCES

ASEAN Disaster Monitoring & Response System (DMRS);
ASEAN Specialised Meteorological Centre (ASMC); Joint
Typhoon Warning Centre (JTWC);

Indonesia: BNPB, BMKG, PVMBG;
Philippines: NDRRMC, PAGASA, PHIVOLCS;
Thailand: DDPM;

Various news agencies.

DISCLAIMER

The AHA Centre was established in November 2011 by the
Association of Southeast Asian Nations (ASEAN) Member
States to facilitate cooperation and coordination among
Member States, relevant agencies of the United Nations
and international organisations in disaster management and
emergency response.

This update consists of significant natural disaster events
that occurred in ASEAN Member States – Brunei
Darussalam, Cambodia, Indonesia, Lao PDR, Malaysia,
Myanmar, Philippines, Singapore, Thailand, and Viet Nam.
The disasters recorded include Drought, Flood, Earthquake,
Tsunami, Volcano, Wind, Landslide, and Storm.

The use of boundaries, geographic names, related
information, and potential considerations for response are
for reference, not warranted to be error-free or implying
official endorsement from ASEAN Member States.

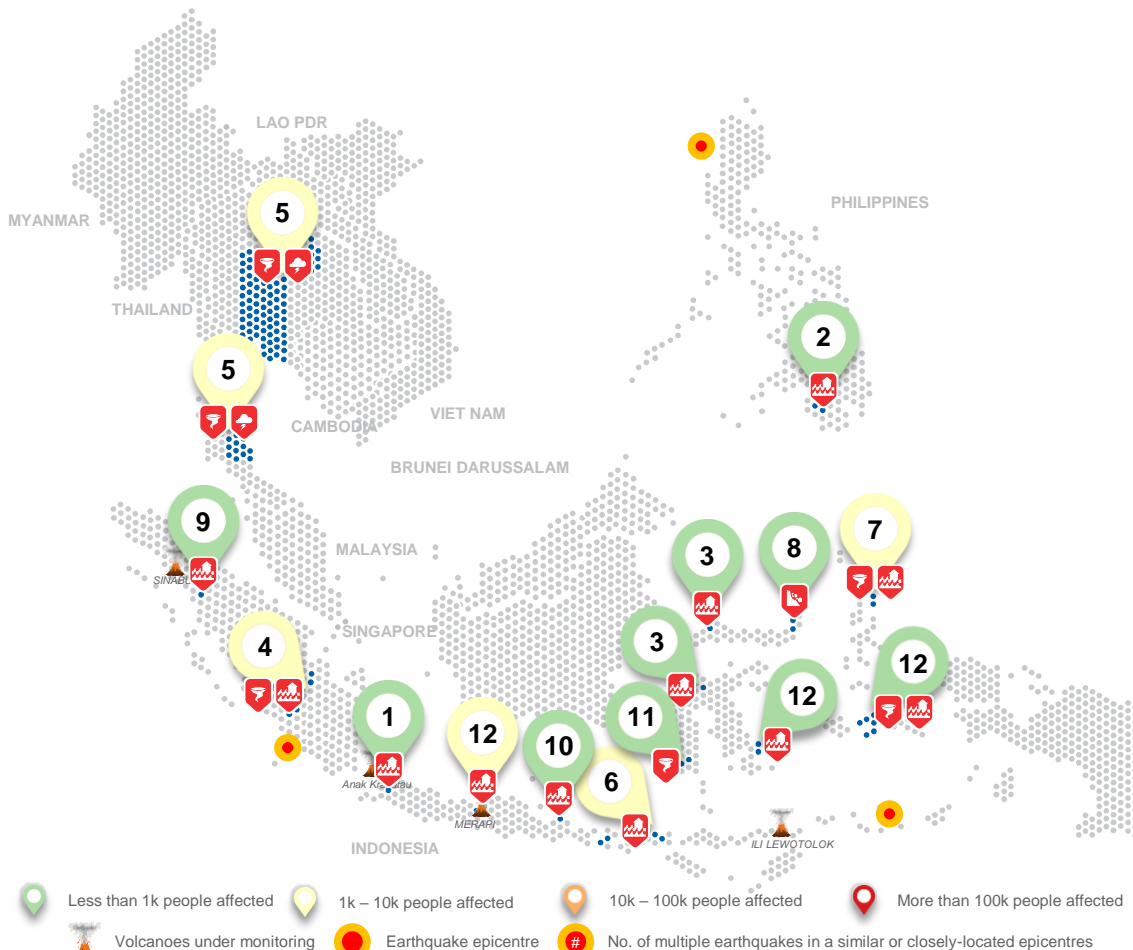
© 2022 AHA Centre.
All rights reserved.

For inquiries, comments, and/or suggestions,
you may reach us through dma@ahacentre.org



You are receiving this email because you are
registered in our distribution list.

SCAN TO SUBSCRIBE



REGIONAL TALLY



Note: Estimations are based on data reported/confirmed by National
Disaster Management Organisations of each respective ASEAN
Member State and other verified sources

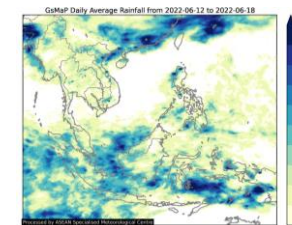
REGIONAL SUMMARY:

For the twenty-fourth week of 2022, a total of 20 disasters (13 floods, 5 wind-related, 1 storm, and 1 landslide) affected the region. Indonesia, the Philippines, and Thailand have reportedly been affected. Coastal abrasion, strong winds, and flooding due to prolonged duration of moderate to heavy rainfall and overflowing of the rivers were reported by *Badan Nasional Penganggulangan Bencana (BNPB)* in Banten, Central, North, and South Sulawesi, North and South Sumatra, West Nusa Tenggara, North Maluku, East Java. The National Disaster Risk Reduction and Management Council (NDRRMC) of the Philippines reported that flooding occurred in Bagumbayan in Sultan Kudarat. Lastly, the Department of Disaster Prevention and Mitigation (DDPM) of Thailand reported that the Southwest Monsoon that prevails over the Andaman Sea and the Gulf of Thailand caused storms and winds which affected the North, Central, Northeast, Eastern, and Southern Regions.

HIGHLIGHT:

According to [BNPB](#), a tidal wave inundated areas in Bima Regency in West Nusa Tenggara. Latest report indicates that 1.4K families (7K persons) have been affected and 325 houses have been damaged along with 1 road, 1 school, 1 place of worship, and 610 fishponds. Local disaster management agencies (BPBD Bima Regency) have coordinated with relevant agencies and organisations to carry out necessary actions and continue to monitor and assess the situation and provide support and logistics to the affected people.

HYDRO-METEO-CLIMATOLOGICAL:



For the past week, data from the ASEAN Specialised Meteorological Centre (ASMC) showed high 7-day average rainfall spreading across Sumatra, Kalimantan, West Java, Sulawesi, and Papua of Indonesia; Eastern Malaysia and the western coast of Peninsular Malaysia; and areas in northern and southern Philippines. As of reporting, no tropical cyclone advisory has been issued by the [JTWC](#).

GEOPHYSICAL:

Three (3) significant earthquakes ($M \geq 5.0$) were recorded in the region by *Indonesia's Badan Meteorologi, Klimatologi, dan Geofisika (BMKG)*, and the Philippine Institute of Volcanology and Seismology [PHIVOLCS](#). Mount Semeru (alert level III), Ibu (alert level II), Dukono (alert level II), Ili Lewotolok (alert level III), and Anak Krakatau (alert level III) in Indonesia, and Taal Volcano (alert level 2), Bulusan Volcano (alert level 1), and Mount Kanlaon (alert level 1) in the Philippines reported recent volcanic activity according to the *Pusat Vulkanologi dan Mitigasi Bencana Geologi (PVMBG)* and the [PHIVOLCS](#).

OUTLOOK:

According to the ASEAN Specialised Meteorological Centre (ASMC), for the coming week, wetter conditions are expected over much of the southern ASEAN region. Cooler than usual temperatures are expected over much of the western and central equatorial region. For the regional assessment of extremes, there is a small increase in chance for a very heavy rainfall event to occur in parts of southern Maritime Continent, in particular southern Borneo, eastern Java, and southern Sulawesi; and moderate increase in chance for extreme hot conditions to occur in the southeastern Maritime Continent. La Niña conditions are still present in the Pacific. At the seasonal timescale, La Niña events tend to bring wetter conditions to much of the ASEAN region. Negative Indian Ocean Dipole is likely to develop by July. Negative IOD tend to bring wetter conditions to much of the ASEAN region.