

WEDNESDAY

27 JUL 2022

1000 HRS UTC +7

M7.3 EARTHQUAKE IN ABRA (CORDILLERA ADMINISTRATIVE REGION)

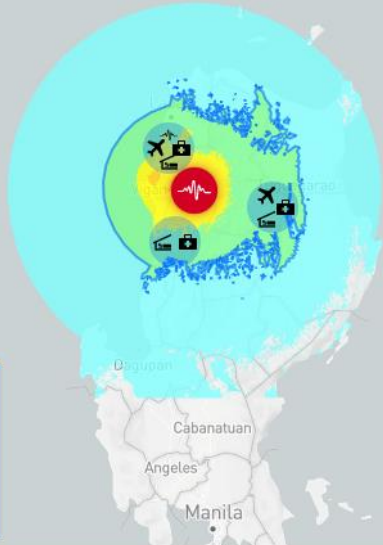
PHILIPPINES

FLASH UPDATE #1



ONE ASEAN ONE RESPONSE

HAZARD EXPOSURE



COORDINATES: LAT: 17.5601 | LNG: 120.8011
REPORTED: WED JUL 27 2022 09:09:56 GMT+0700 (INDOCHINA TIME)
DEPTH: 10 KM
MAGNITUDE: 7



BREAKDOWN OF KEY NEEDS

FOR EXPOSED VULNERABLE POPULATION

1.11 BILLION CALORIES PER DAY

53,241 100-LITER WASTE BINS

1.59 MILLION LITERS OF WATER PER DAY

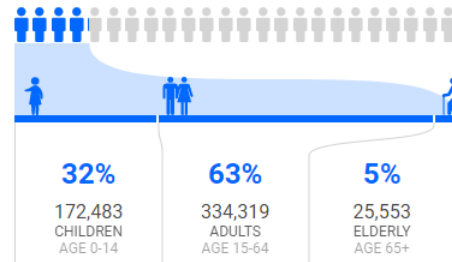
1.83 MILLION SQUARE METERS OF SHELTER

POPULATION EXPOSED

ESTIMATED POPULATION EXPOSED
3.13 MILLION

ESTIMATED HOUSEHOLDS EXPOSED
666,271

ESTIMATED VULNERABLE POPULATION EXPOSED
532,355



ESTIMATED HOSPITALS EXPOSED
102

ESTIMATED SCHOOLS EXPOSED
118

CAPITAL EXPOSED

USD
20.5 BILLION

LIKELIHOOD OF IMPACT TO LIFELINES

POWER: MODERATE

COMMUNICATION: MODERATE

TRANSPORTATION: MODERATE



Abra. Photo courtesy of Philippine Information Agency (PIA)

Abra. Photo courtesy of Office of Abra Rep. Ching Bernos

Abra. Photo courtesy of PNP Regional Office Cordillera

- **OVERVIEW:** According to the Philippine Institute of Volcanology and Seismology ([PHIVOLCS-DOST](#)), an earthquake with a magnitude of 7.3 at a depth of 25 km occurred at 0743 UTC+7, 11 km East-Southeast of Dolores, Philippines.
- **ANALYSIS:** preliminary analysis indicates that this is a very strong earthquake, and it is very shallow (shallower quakes tend to be more damaging than deeper quakes) ([DMRS](#)).
- **IMPACTS:** based on the preliminary data, earthquakes of this depth and magnitude are expected to result in moderate to severe shaking within 245 km from the epicenter. Aftershocks and damages are expected as per the Office of Civil Defense ([OCD](#)). No tsunami is expected according to the NWS Pacific Tsunami Warning Center.
- **EXPOSURE:** **3.13 Million people, 666.3K households, and \$20.5 Billion (USD)** worth of infrastructure (total replacement cost) are concentrated within 245 km of the epicenter. Likelihood of impact to lifelines (power, communication, transportation) is moderate ([DMRS](#)).
- **PREPAREDNESS AND RESPONSE:**
 - The Office of Civil Defense ([OCD](#)) has issued necessary warnings, advice, and information in relation to the M7.3 earthquake.
 - As of reporting, the Philippines' National Disaster Reduction and Management Council ([NDRRMC](#)) is discussing the earthquake and necessary measures to be taken in response.
- The AHA Centre will continue to monitor and issue necessary updates once more information from official sources becomes available.

DATA SOURCES

ASEAN Disaster Monitoring & Response System (DMRS); Pacific Disaster Center (PDC Global);

Philippines: NDRRMC, OCD, PHIVOLCS-DOST, PIA;

Verified news media agencies.

DISCLAIMER

The AHA Centre was established in November 2011 by the Association of Southeast Asian Nations (ASEAN) Member States to facilitate cooperation and coordination among the Member States, relevant agencies of the United Nations, and international organisations in disaster management and humanitarian assistance.

The use of boundaries, geographic names, related information and potential considerations for response are for reference, not warranted to be error free or implying official endorsement from ASEAN Member States.

© 2022 AHA Centre.

AHA Centre.

All rights reserved.

You are receiving this email because you are registered in our distribution list.

Our mailing address is:

AHA Centre,

GRAHA BNPB 13th Floor,

Jl. Raya Pramuka Kav. 38,

Jakarta 13120 Indonesia