

MONDAY

31 OCT 2022

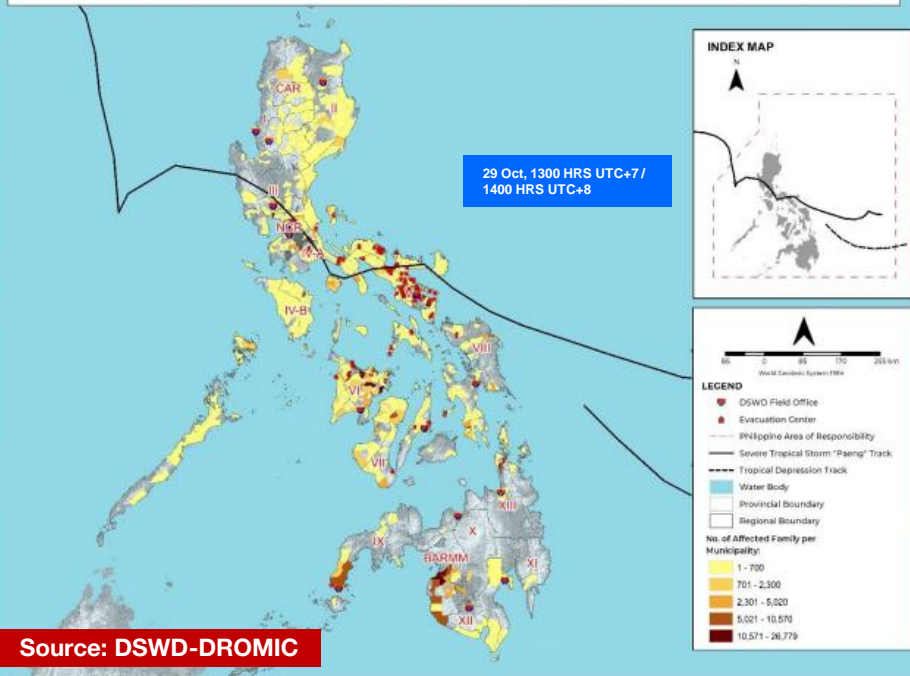
1730 UTC +7 / 1830 UTC +8

# TROPICAL CYCLONE NALGAE (Paeng) and 27W (Queenie) – PHILIPPINES FLASH UPDATE #3



ONE ASEAN ONE RESPONSE

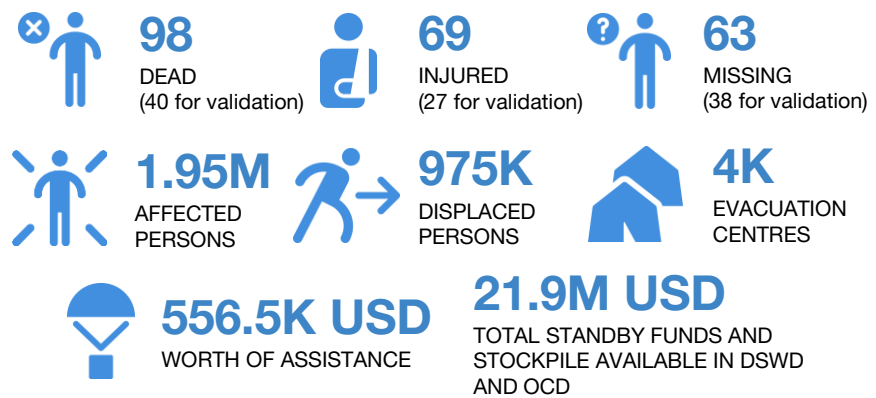
## MUNICIPALITIES AFFECTED BY SEVERE TROPICAL STORM "PAENG"



Source: DSWD-DROMIC

## KEY FIGURES

Disclosure(s): Estimations are based on data reported/confirmed by National Disaster Management Organisations of the respective ASEAN Member State (National Disaster Risk Reduction and Management Council – Office of Civil Defense (NDRRM-OCD) and other verified sources



## IMPACTS of Tropical Cyclone NALGAE

- **SITUATION OVERVIEW:** Tropical Cyclone (TC NALGAE) was detected to have developed in the Philippine Sea starting 26 October 2022 as a Tropical Depression. On 27 Oct, TC NALGAE was upgraded to a Tropical Storm-category TC and to a Severe Tropical Storm-category TC on 28 Oct. On 29 Oct, TC NALGAE made landfall in Virac, Catanduanes (0010 UTC+7), Caramoan, Camarines Sur (0040 UTC+7), Buenavista, Quezon (0500 UTC+7), Sta. Cruz, Marinduque (0740 UTC+7), Sariaya, Quezon (1240 UTC+7), and Baliuag, Bulacan (2100 UTC+7). TC NALGAE exited the Philippine Area of Responsibility today 31 Oct, 1110 UTC+7.
- **RELATED INCIDENTS:** As of reporting, TC NALGAE resulted in **1,014 related incidents** of which 554 are floods (294 subsided, 11 receding), 49 are rain-induced landslides, and 10 are storm surges in Regions I, II, III, V, VI, VII, VIII, IX, X, XI, XII, CALABARZON, MIMAROPA, CARAGA, CAR, NCR, and BARMM.
- **AFFECTED POPULATION:**
  - **98 dead** (40 for validation), **69 injured** (27 for validation), **63 missing** (38 for validation)
  - A total of **590,999 families** or **1,953,814 persons** were affected.
  - There is a total of **975,374 persons internally displaced** in the above-mentioned regions. Of which, 309,218 persons were served inside 4,024 evacuation centres and 666,156 persons were served outside ECs
- **DAMAGES:**
  - **364 road sections** and **82 bridge sections**, 53% are still **not passable**.
  - **1 out of 8 cities/municipalities** with affected water supply, **resolved**.
  - **94 out of 263 cities/municipalities** with **power outage**, **restored**.
  - **3 out of 45 cities/municipalities** with **affected communication lines**, **restored**.
  - **9 airports** (2 already operational) and **110 seaports** were affected (16 already operational)
  - **4,188 damaged houses** (3,499 partially, 689 totally)
  - **20.8M USD worth of damages** (of which 7.5M USD are in agriculture, 257K USD are in livestock, poultry and fisheries, 13.1M USD in infrastructure)
- **PREPAREDNESS AND RESPONSE:**
  - Preemptive evacuation of 105,726 persons
  - 556.5K USD worth of assistance has been provided by the DSWD, OCD, and LGUs.
  - The Philippines [NDRRM](#) Alert Status was raised to **RED ALERT** (highest level of alert to address an ongoing or in anticipation of an imminent emergency situation) on 27 Oct.
  - National Meteorological and Hydrological Services (NMHS) in the [Philippines](#), continue to release tropical cyclone warning/advisories for **TC NALGAE**.
  - A total of 21.9M USD worth of standby funds and stockpile available in DSWD and OCD of which 3.2M USD are quick response funds.
  - 850 Search, Rescue, and Retrieval (SRR) teams and 755 SRR assets deployed.
  - 165 transportation and 804 debris clearing assets currently deployed, 3,811 assets on standby, 1,105 of which are transportation assets and 2,706 are debris clearing equipment.
  - 158 cities and municipalities declared under a **State of Calamity**. NDRRM has recommended the declaration of a **National State of Calamity** on 29 Oct.
- The AHA Centre has sent a letter of sympathy with offer of assistance to NDRRM-OCD today (31 Oct).
- The AHA Centre will continue to monitor and issue necessary updates.

MONDAY

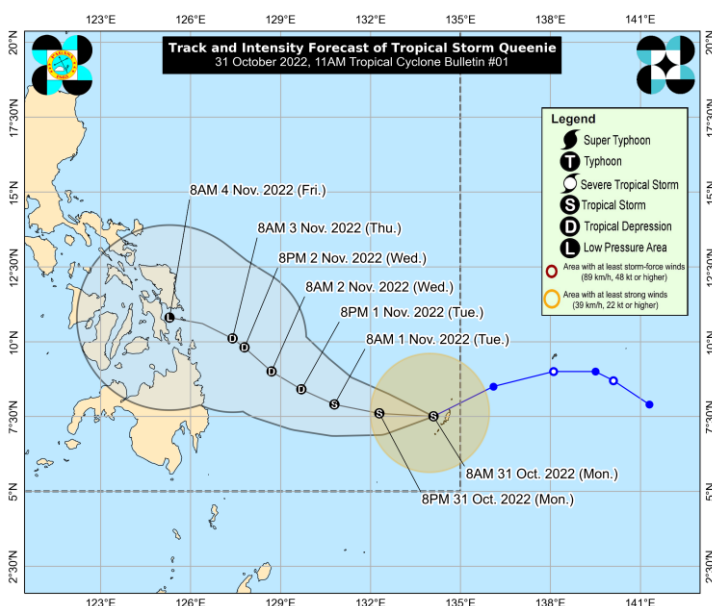
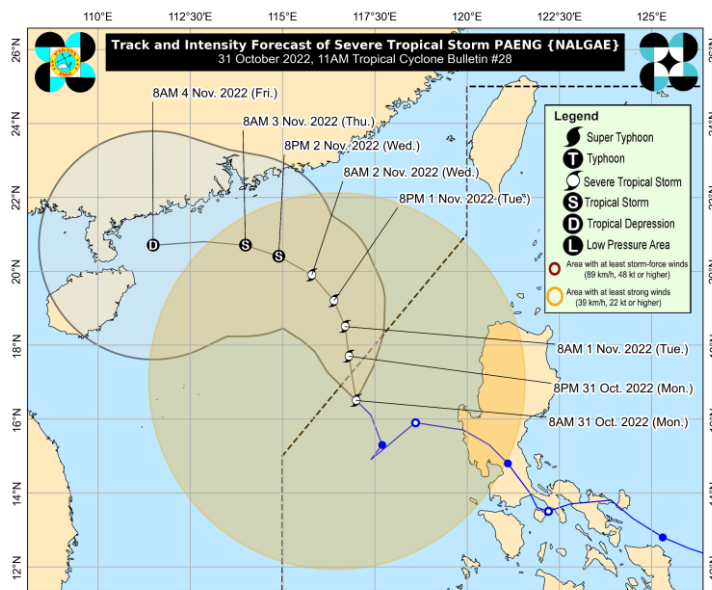
31 OCT 2022

1730 UTC +7 / 1830 UTC +8

# TROPICAL CYCLONE NALGAE (Paeng) and 27W (Queenie) – PHILIPPINES FLASH UPDATE #3



ONE ASEAN ONE RESPONSE



## Forecast TC NALGAE

- **OVERVIEW:** As of the morning of 31 October 2022, **Tropical Cyclone (TC) NALGAE** (local name: Paeng) currently a Severe Tropical Storm-category TC, intensified further as it continues to move over the West Philippine Sea.
- **LOCATION:** The centre of **TC NALGAE** was estimated based on all available data at 400 km West of Sinit, Ilocos Sur (OUTSIDE PAR as of 1110 UTC+7) (17.6 °N, 116.7 °E )
- **INTENSITY:** Maximum sustained winds of 110 km/h near the centre and gustiness of up to 135 km/h. Strong to gale-force winds extend outwards up to 650 km from the centre.
- **OUTLOOK:**
  - **TC NALGAE** is forecast to track northward in the next 12 hours before gradually turning northwestward to west northwestward towards southern China.
  - **TC NALGAE** is forecast to reach typhoon category tonight or tomorrow early morning. After reaching its peak intensity, a weakening trend is expected by Wednesday.

## Forecast TC 27W

- **OVERVIEW:** As of the 1600 UTC+7 of 31 October 2022, **Tropical Cyclone (TC) 27W** (local name: Queenie) currently a Tropical Storm-category TC, accelerates west-southwestward while maintaining its strength.
- **LOCATION:** The centre of **TC 27W** was estimated based on all available data at 695 km East Southeast of Hinatuan, Surigao del Sur or 755 km East of Davao City (07.0 °N, 132.5 °E )
- **INTENSITY:** Maximum sustained winds of 65 km/h near the centre and gustiness of up to 80 km/h. Strong to gale-force winds extend outwards up to 220 km from the centre.
- **OUTLOOK:**
  - **TC 27W** entered the Philippine Area of Responsibility at 0400 UTC+7. **TC 27W** is forecast to track westward in the next 12 hours before turning generally west northwestward tomorrow through Wednesday morning. By Wednesday afternoon, this storm will begin to move generally northwestward towards Caraga-Eastern Visayas area.
  - **TC 27W** intensified into a tropical storm at 0700 UTC+7 today. It may further intensify in the next 12 hours. However, weakening trend is likely by tomorrow (1 Nov) evening or Wednesday (2 Nov). Weakening into a remnant low is likely on Friday (4 Nov) as it approaches Caraga or Eastern Visayas.

The AHA Centre will continue to monitor and issue necessary updates.