



ONE ASEAN
ONE RESPONSE

SITUATION UPDATE

TROPICAL CYCLONE NALGAE PHILIPPINES

No. **2**

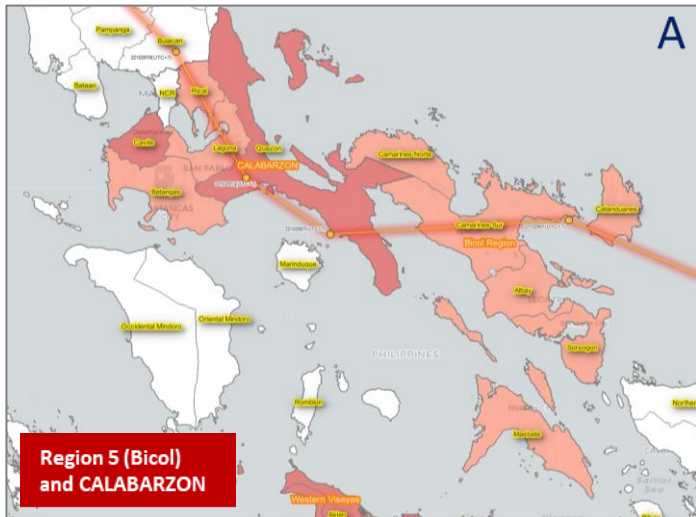
Sunday, 6 November 2022, 1700 HRS (UTC+7)

This Situation Update is provided by the AHA Centre for use of the ASEAN Member States and relevant stakeholders. The information presented is collected from various sources, including but not limited to ASEAN Member States' Government Agencies, UN, IFRC, NGOs, Humanitarian and Dialogue Partners, and News Organisations.

Tropical Cyclone NALGAE




Disclosure(s): Figures are the latest updates as of 6 November 2022



| Region / Province | Affected Families | Affected Persons |
|-------------------|-------------------|------------------|
| CALABARZON | 177,899 | 713,982 |
| CAVITE | 104,751 | 436,614 |
| LAGUNA | 22,387 | 84,565 |
| BATANGAS | 12,957 | 53,420 |
| RIZAL | 6,261 | 27,221 |
| QUEZON | 31,543 | 112,162 |
| REGION 6 | 366,085 | 1,384,686 |
| Aklan | 72,452 | 258,279 |
| Antique | 42,443 | 171,527 |
| Capiz | 107,297 | 407,287 |
| Guimaras | 164 | 450 |
| Iloilo | 100,704 | 380,902 |
| Negros Occidental | 43,025 | 166,241 |
| REGION 5 | 69,668 | 269,616 |
| ALBAY | 18,322 | 69,076 |
| CAMARINES NORTE | 9,620 | 35,810 |
| CAMARINES SUR | 23,316 | 94,111 |
| CATANDUANES | 11,031 | 43,079 |
| MASBATE | 2,928 | 11,580 |
| SORSOGON | 3,286 | 11,864 |
| NAGA | 1,165 | 4,096 |
| BARMM | 212,434 | 444,268 |
| MAGUINDANAO* | 143,578 | 102,455 |
| LANAO DEL SUR | 380 | 550 |
| COTABATO CITY | 67,596 | 337,980 |
| BASILAN | 499 | 1,994 |
| SULU | 256 | 1,289 |
| TAWI-TAWI* | 125 | - |

*incomplete data report

 **4.62M**
AFFECTED PERSONS

 **1.27M**
DISPLACED PERSONS

 **156**
DEAD

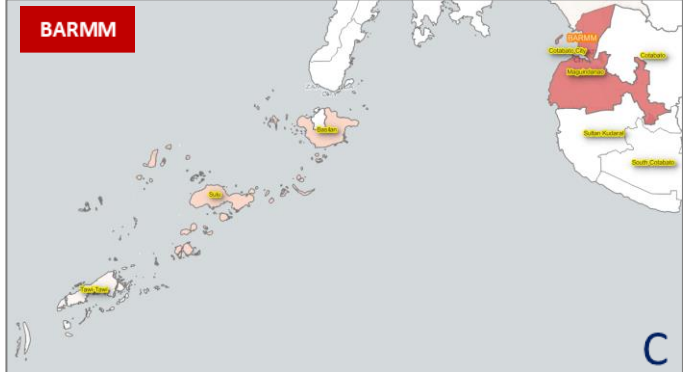
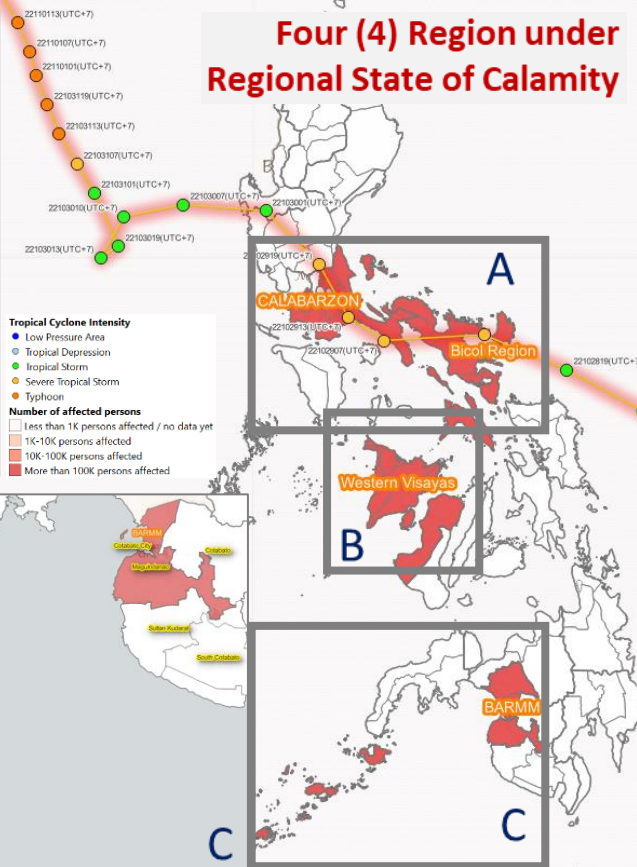
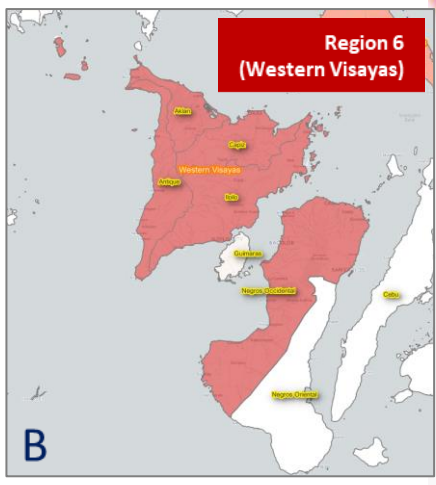
 **141**
INJURED

 **37**
MISSING

 **34.7K**
HOUSES

 **128M USD**
WORTH OF DAMAGES

 **2.9M USD**
WORTH OF ASSISTANCE



Tropical Cyclone Intensity

- Low Pressure Area
- Tropical Depression
- Severe Tropical Storm
- Typhoon

Number of affected persons

- Less than 1K persons affected / no data yet
- 1K-10K persons affected
- 10K-100K persons affected
- More than 100K persons affected



Note: Information contains in this document are the additional information or updates since the Situations Update #1 - 4 November 2022 until today (6 November 2022 at 1600 HRS UTC+7), you may refer to the AHA Centre [Situation Update #1 - 4 November 2022](#) for the previous information.

1. SUMMARY

a. **Meteorological History.** On 25 October 2022, a low-pressure area (LPA) was detected 990 km East of Eastern Visayas. On 26 October, the LPA developed into Tropical Depression (TD) “PAENG”. On 28 October, at most Tropical Cyclone Wind Signal no. 2 was issued, and TD “PAENG” strengthened into a Severe Tropical Storm-category (TC) and was given the international name “NALGAE”. On 29 October, TC NALGAE made a series of landfalls (7) with details as shown in page 1 and as follows:

- 0010: Virac, Catanduanes
- 0040: Caramoan, Camarines Sur
- 0300: Siruma, Camarines Sur
- 0500: Buenavista, Quezon
- 0740: Santa Cruz, Marinduque
- 1240: Sariaya, Quezon
- 2100: Baliuag, Bulacan

b. **Preparedness and Response.**

Alert Status. As of 6 November 2022, the Philippines’ National Disaster Risk Reduction and Management Council (NDRRMC) remains on **RED ALERT** (highest level of alert to address an ongoing or in anticipation of an imminent emergency) – Day 11 for Tropical Cyclone NALGAE.

Response. 8 response cluster remain activated: early recovery (OCD), food and non-food items (DSWD), camp coordination and management (DSWD), IDPs protection (DSWD), education (DepEd), logistics (OCD), shelter (DHSUD), and health (DOH); 2 clusters on standby: management of the dead and missing (DILG) and Philippine International humanitarian assistance (DFA); and 3 clusters deactivated: SSR (AFP), law and order (PNP), and emergency telecommunications (DICT).

State of Calamity. CALABARZON, Region V, VI, and BARMM are still under a Regional State of Calamity.

ASEAN Emergency Response and Assessment Team (ERAT). 2-member In-Country Liaison Team from the AHA Centre, 3-member ASEAN-ERAT Specialists from Brunei Darussalam, Malaysia, and Singapore as well as 1 in-country ASEAN ERAT member has arrived in Manila, the Philippines on 6 November 2022 to support the ongoing assessment and provision of humanitarian response in the Philippines as the impacts of Tropical Cyclone NALGAE.



2. ASSESSMENT OF IMPACT AND HUMANITARIAN NEEDS

Impacts in the Philippines – CATASTROPHIC as of 6 Nov 2022 (based on DMA guidelines)

- a. Casualties and Affected Population
 - 156 dead, 141 injured, 37 missing
 - 1,269,166 families (4,623,408 persons) affected in 9,481 barangays in 879 cities/municipalities from 78 provinces of 17 regions.
 - 1,027,929 currently internally displaced persons (107,343 persons inside 954 evacuation centres; and 920,586 persons outside evacuation centres)
- b. Damages
 - 127.7M USD worth of damages (52.45M USD to agriculture, 1.93M USD to livestock, poultry, and fisheries, 73.27M USD to infrastructure, and 17K to other damaged assets)
 - 34,698 houses damaged (31,558 partially, 3,140 totally)
- c. Lifelines
 - 580 road sections and 120 bridge sections affected, 28% of the total of both still not passable to all types of vehicles
 - 5 of 9 affected airports already operational
 - 81 of 121 affected seaports already operational
 - 256 of 359 power affected cities/municipalities restored
 - 19 of 27 water supply affected cities/municipalities restored
 - 9 of 47 comms affected cities/municipalities restored
- d. Related incidents
 - 1,576 related incidents (1,358 floods, 133 rain-induced landslides, and 85 others)

Anticipated Risks. According to the ASEAN Specialised Meteorological Centre (ASMC), central to southern Philippines (Visayas and Mindanao) may still experience wetter conditions than normal during the period of 31 October – 13 November. Hence, TC NALGAE affected areas in Visayas and Mindanao may still experience hydrometeorological hazards, Annex 1. As of 1300 HRS UTC+7, there is no active tropical cyclone advisories for the Philippines (JTWC), Annex 2. According to the PAGASA, during the period of 11-17 November 2022, a Tropical Cyclone vortex identified as TCLV1 embedded in the Intertropical Convergence Zone (ITCZ) will likely form. It has a low likelihood of becoming a tropical cyclone by will likely enter the Philippine Area of Responsibility and move towards southern Luzon – Visayas area, Annex 3.

Humanitarian Needs (as identified by NDRRMC). Special mention of Mobile Storage Unit (MSU) for BARMM. Special mention of relief and family food packs; drinking water; hygiene kits; temporary shelter and repair kits; medicines; livelihood assistance; and transportation/logistics for Maguindanao Province (BARMM). Special mention of family food packs; drinking water and water purifiers; hygiene kits; temporary shelter and repair kits; and transportation/logistic particularly access to Panay Island for Antique and Aklan Provinces (Region VI).



3. ACTIONS TAKEN AND RESOURCES MOBILISED

Response by the Government of the Philippines as of 6 November 2022

a. **Operational.**

NDRRMC Day 11 **RED ALERT** for Tropical Cyclone NALGAE in the Philippines.

Preemptive evacuation of 100,701 families or 355,431 persons in Region I, II, CALABARZON, MIMAROPA, Region V, VI, VII, VIII, IX, X, XI, XII.

Four (4) Declarations of a Regional State of Calamity (CALABARZON, Region V, VI, and BARMM). Provincial State of Calamity in CALABARZON (2), Region V (2), and BARMM (1). City/Municipality State of Calamity in Region II (3), MIMAROPA (3), Region VIII (1), Region IX (2), Region XII (3), and BARMM (4).

b. **Costs of Humanitarian Assistance.**

A total of 2.9M USD worth of assistance has been provided to those affected in Region I, II, III, CALABARZON, MIMAROPA, V, VI, VII, VIII, IX, X, CARAGA, CAR, and NCR by the DSWD, OCD, and LGUs

A total of 27.3M USD worth of standby stockpiles and standby funds prepositioned and available from DSWD and OCD (of which 18.8M USD worth are standby stockpiles (food and non-food items) and 8.5M USD worth are standby funds).

c. **Response Cluster EEIs.**

Search Rescue and Retrieval (SRR). 1,083 SRR teams deployed, 828 SRR assets deployed, and 7,355 rescued individuals.

Emergency Telecommunications. 440 emergency telecommunications equipment deployed. 1,093 emergency telecommunications equipment available and deployable.

Law and Order. 751 visibility patrols in evacuated areas; 5,024 in commercial districts/areas; 697 police assistance desks established at occupied evacuation centres.

Evacuation Centres. 470 schools currently being used as evacuation centres; 1,504 classrooms currently being used as evacuation centres.

Health. 287K USD worth of medical logistics augmentation and 1.8M USD worth of prepositioned medical logistics.

Shelter. 3,000 shelter grade tarpaulins to be provided to affected families in Region XII and BARMM.

Response by the AHA Centre as of 6 November 2022

- a. On 4 November 2022, the AHA Centre met with NDRRMC-OCD to discuss the deployment of DELSA and ASEAN-ERAT. Additionally, in view of the acceptance of the Philippines of the AHA Centre's offer of assistance, with the guidance of the Executive Director and the Director of Operations, and in light of the AHA Centre's coordination with NDRRMC-OCD regarding the deployment of DELSA and ASEAN-ERAT throughout,



the AHA Centre raised its EOC Alert Status to **RED** (Active Response). Situation Update no. 1 was also disseminated.

- b. On 5 November 2022, the AHA Centre conduct pre departure briefing with the ASEAN-ERAT members and NDRRMC-OCD to discuss the deployment of ASEAN-ERAT as well as pre-departure administrative arrangements. Additionally, the meeting also discussed about the latest situation update in the Philippines and analysis from NDRRMC-OCD and the AHA Centre. According to the further guidance from NDRRMC-OCD, one of the in-country ASEAN ERAT Members, Mr. Ryan Paul Roxas from NDRRMC-OCD will be replaced by Ms. Nova Eloiza Ybanez from OCD-BARMM.
- c. On 6 November 2022, 2-member In-Country Liaison Team from the AHA Centre, 3-member ASEAN-ERAT Specialists from Brunei Darussalam, Malaysia, and Singapore as well as 1 in-country ASEAN ERAT member has arrived in Manila, the Philippines. List of the ICLTs and ASEAN ERAT Members to support the ongoing assessment and provision of humanitarian response in the Philippines as the impacts of TC NALGAE are as follows:

| Name | Country / Organisations | Role |
|-------------------------|---|------------|
| Agustina Tnunay | AHA Centre | ICLT |
| Moch Syifa | AHA Centre | ICLT |
| Sia Peir Hong | Singapore | ASEAN ERAT |
| Janaki Rani Suparminiom | Malaysia | ASEAN ERAT |
| Siti Masnur | Brunei Darussalam | ASEAN ERAT |
| Bai April Sinsuat | OCD, the Philippines | ASEAN ERAT |
| Nova Eloiza Ybanez | OCD, the Philippines | ASEAN ERAT |
| Angelito Casinillo | OCD, the Philippines | ASEAN ERAT |
| Jommel Mayor Merano | Independent Consultant, the Philippines | ASEAN ERAT |
| May Francelline Jimenez | Independent Consultant, the Philippines | ASEAN ERAT |

- a. The ICLTs and ASEAN-ERAT members are scheduled to report to the Office of Civil Defense (OCD) in the Camp Aguinaldo, Quezon City, the Philippines on Monday, 7 November 2022. Deployment of the ICLTs and ASEAN-ERAT to the Philippines is for a tentative duration of ten (10) days.
- d. AHA Centre is closely monitoring in terms of impact information through the ASEAN Disaster Information Network (ADINet) with the following identification numbers:
 - AHADID: [AHA-TC-2022-001234-PHL](#)
 - GLIDE Number: [TC-2022-000352-PHL](#)

Response by Other Humanitarian and Operational Partners as of 6 November 2022

- a. **ASEAN Specialised Meteorological Centre (ASMC).** The ASMC has issued the fortnightly outlook guidance for the forecast period of 31 October – 13 November 2022, Annex 1.
- b. **United Nations Satellite Centre (UNOSAT).** UNOSAT has provide satellite imagery analysis for Capiz Province, Region VI. Within the analysed area of about 1,300 km², about 28 km² of lands appear to be flooded, Annex 4.



4. RECOMMENDATIONS AND PLAN OF ACTIONS

The AHA Centre's Plan

- a. AHA Centre prepared an Emergency Response Action Plan operational until 18 November 2022. All section chiefs will be activated, and respective units are on a needs basis to support the section chief.
- b. AHA Centre to ready stocks in Subang if the needs exceed the available stocks in the DELSA Satellite Warehouse in Camp Aguinaldo, Quezon City, Philippines.
- c. The AHA Centre will continuously update the impact information in the ASEAN Disaster Information Network (ADINet) on the impacts of TC NALGAE with the following identification numbers AHADID: [AHA-TC-2022-001234-PHL](#) | GLIDE Number: [TC-2022-000352-PHL](#).



Prepared by:

The AHA Centre - Emergency Operations Centre (EOC)

ABOUT THE AHA CENTRE

The AHA Centre - ASEAN Coordinating Centre for Humanitarian Assistance on disaster management - is an inter-governmental organisation established by 10 ASEAN Member States – Brunei Darussalam, Cambodia, Indonesia, Lao PDR, Malaysia, Myanmar, Philippines, Singapore, Thailand and Viet Nam - to facilitate the cooperation and coordination among ASEAN Member States and with the United Nations and international organisations for disaster management and emergency response in the region.

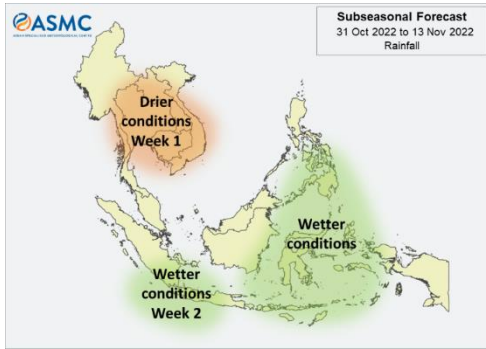
The ASEAN Coordinating Centre for Humanitarian Assistance on disaster management (AHA Centre), Graha BNPB 13th Floor, JL Raya Pramuka Kav 38, East Jakarta, 13210, Indonesia
Phone: +62-21-210-12278 | www.ahacentre.org | email: info@ahacentre.org

Contact:

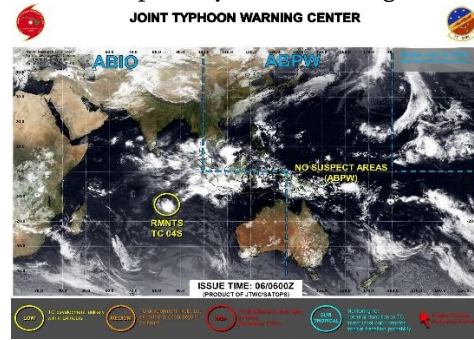
- 1) Agustina Tnunay, Assistant Director for Preparedness and Response,
agustina.tnunay@ahacentre.org
- 2) Lawrence Anthony Dimailig, Assistant Director for Disaster Monitoring and Analysis,
lawrence.dimailig@ahacentre.org
- 3) Keith Paolo Landicho, Disaster Monitoring and Analysis Officer,
keith.landicho@ahacentre.org
- 4) Sadhu Zukhruf Janottama, Disaster Monitoring & Analysis Officer,
sadhu.janottama@ahacentre.org



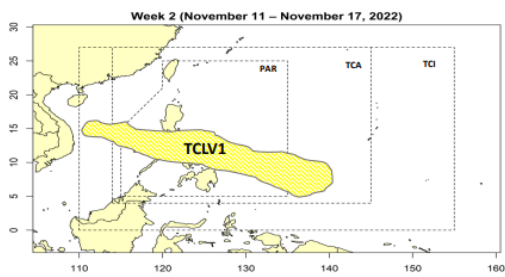
Annex 1. Subseasonal Forecast – ASMC



Annex 2. Tropical Cyclone Warnings – JTWC



Annex 3. Tropical Cyclone Threat Potential – PAGASA



Annex 4. Satellite Imagery Analysis for Capiz Province, Region VI – UNOSAT

