

11th ANNIVERSARY

WEEKLY DISASTER UPDATE

Week 51
19 - 25 Dec 2022

- ahacentre.org
- ahacentre
- @ahacentre
- @ahacentre

The AHA Centre, GRAHA BNPB 13th floor,
Jl. Raya Pramuka Kav. 38, East Jakarta 13120 Indonesia

SOURCES
ASEAN Disaster Monitoring & Response System (DMRS);
ASEAN Specialised Meteorological Centre (ASMC); Joint
Typhoon Warning Centre (JTWC);

Indonesia: BNPB, BMKG, PVMBG;
Malaysia: NADMA;
Philippines: NDRRMC, PHIVOLCS;

Various news agencies.

DISCLAIMER

The AHA Centre was established in November 2011 by the
Association of Southeast Asian Nations (ASEAN) Member
States to facilitate cooperation and coordination among
Member States, relevant agencies of the United Nations
and international organisations in disaster management and
emergency response.

This update consists of significant natural disaster events
that occurred in ASEAN Member States – Brunei
Darussalam, Cambodia, Indonesia, Lao PDR, Malaysia,
Myanmar, Philippines, Singapore, Thailand, and Viet Nam.
The disasters recorded include Drought, Flood, Earthquake,
Tsunami, Volcano, Wind, Landslide, and Storm.

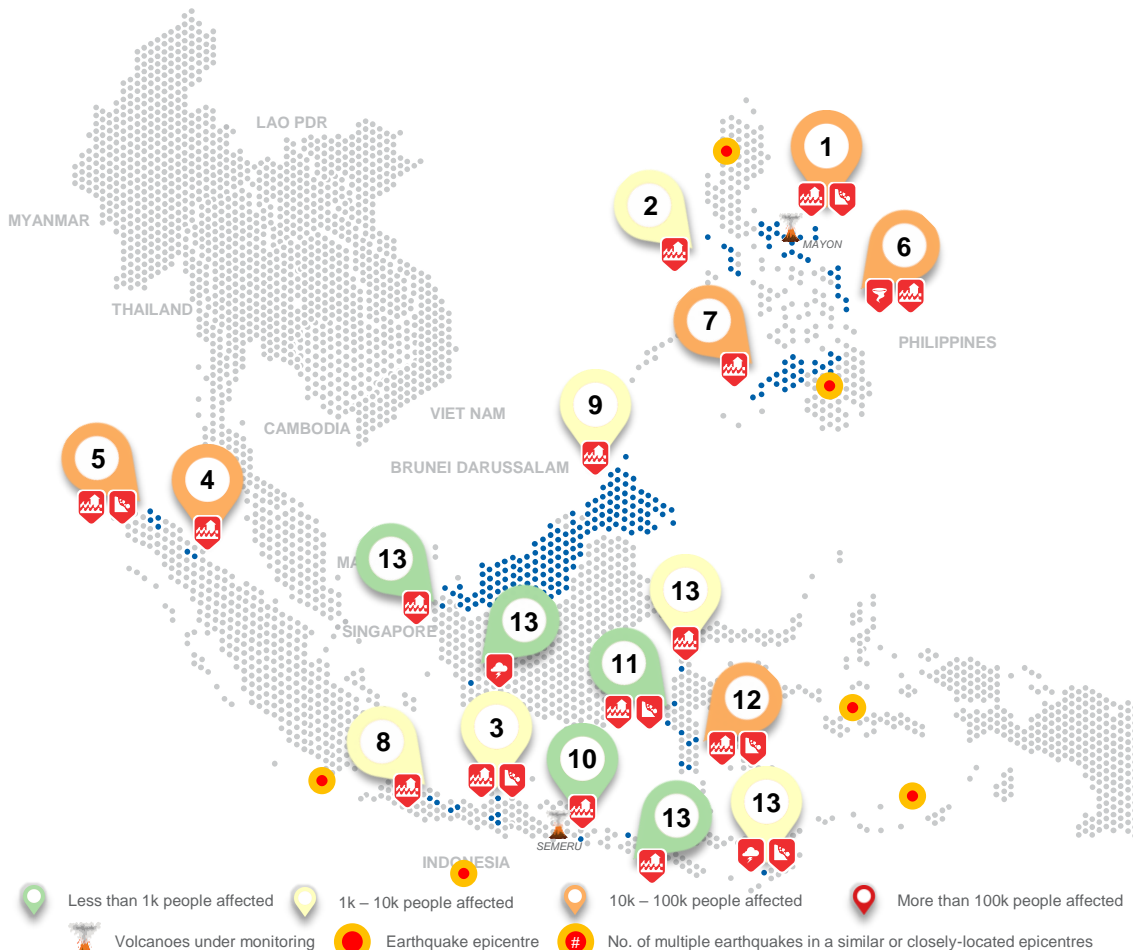
The use of boundaries, geographic names, related
information, and potential considerations for response are
for references, not warranted to be error-free or implying
official endorsement from ASEAN Member States.

© 2022 AHA Centre.
All rights reserved.

For inquiries, comments, and/or suggestions,
you may reach us through dma@ahacentre.org

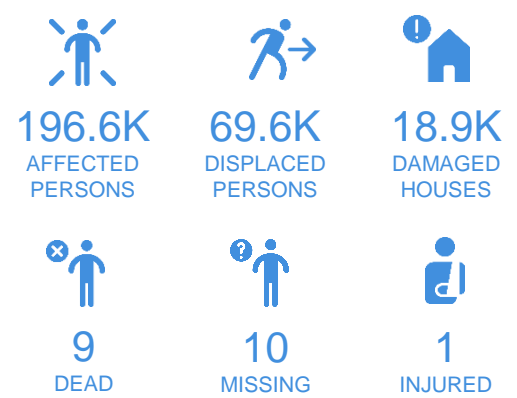


SCAN TO SUBSCRIBE



📍 Less than 1k people affected
 📍 1k – 10k people affected
 📍 10k – 100k people affected
 📍 More than 100k people affected
🌋 Volcanoes under monitoring
 🔴 Earthquake epicentre
 🔴 No. of multiple earthquakes in a similar or closely-located epicentres

REGIONAL TALLY



Note: Estimations are based on data reported/confirmed by National Disaster Management Organisations of each respective ASEAN Member State and other verified sources

- 01 Philippines, Flooding and Landslides in [Region V](#)**
19 Dec 2022
- 02 Philippines, Flooding in [Oriental Mindoro](#) (MIMAROPA)**
19 Dec 2022
- 03 Indonesia, Flooding and Landslides in [Pati Regency, Surakarta City, Karanganyar, and Klaten](#) Regency (Central Java)**
19, 22, 23, 23 Dec 2022
- 04 Indonesia, Flooding in [Langkat](#) and [Deli Serdang](#) Regency (North Sumatra)**
19, 22 Dec 2022
- 05 Indonesia, Flooding and Landslide in [Lhokseumawe City, East Aceh, North Aceh, and Aceh Tamiang](#) Regency (Aceh)**
20, 20, 20, 21 Dec 2022
- 06 Philippines, Flooding and Strong Wind in [Eastern Samar](#) and [Eastern Visayas](#) (Region VIII)**
20, 24 Dec 2022
- 07 Philippines, Flooding in [Misamis Occidental, Misamis Oriental and Misamis Occidental](#) (Region X), and [Zamboanga Peninsula](#) (Region IX)**
21, 25, 25 Dec 2022
- 08 Indonesia, Flooding in [Cirebon City, Cirebon, Karawang, and Bekasi](#) Regency (West Java)**
21, 21, 25, 25 Dec 2022
- 09 Malaysia, Flooding and Landslides in [Sabah and Serawak](#)**
23 Dec 2022
- 10 Indonesia, Flooding in [Jember](#) Regency (East Java)**
23 Dec 2022
- 11 Indonesia, Flooding and Landslides in [Mamuju](#) and [Maijene](#) Regency (West Sulawesi)**
23, 23 Dec 2022
- 12 Indonesia, Flooding and Landslide in [Soppeng, Wajo, Takalar, Gowa, and Pinrang](#) Regency (South Sulawesi)**
23, 24, 24, 24, 24 Dec 2022
- 13 Others: Indonesia – [Sambas](#) Regency (23-12), [Ketapang](#) Regency (23-12), [East Lombok](#) Regency (24-12), [Donngala](#) Regency (24-12), [Kupang](#) Regency (25-12)**

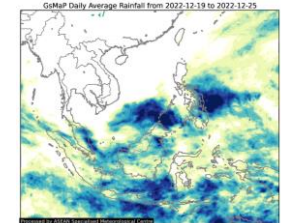
REGIONAL SUMMARY:

For the fifty-first week of 2022, a total of 42 disasters (32 floods, 7 landslides, 2 wind-related, and 1 severe local storm) affected the region. Indonesia, Malaysia, and Thailand have reportedly been affected by the disasters. Indonesia's *Badan Nasional Penanggulangan Bencana (BNPB)* reported floodings caused by heavy rainfall, overflowing of the rivers, and tidal waves; landslides caused by heavy rainfall and unstable soil condition; a storm and a tornado caused by heavy rainfall and strong wind in Aceh, West Java, Central Java, East Java, West Kalimantan, West Nusa Tenggara, East Nusa Tenggara, West Sulawesi, South Sulawesi, Central Sulawesi, and North Sumatra, Indonesia. *Agensi Pengurusan Bencana (NADMA)* Malaysia reported flooding in Sabah and Serawak, Malaysia, and according to the report, flooding since week 50 still persists in Kelantan, Terengganu, and Perak States. The Philippines' National Disaster Risk Reduction and Management Council (*NDRRMC*) reported tornadoes, landslides, and floodings in Zamboanga Del Norte, Misamis Oriental, Misamis Occidental, Eastern Visaya, Oriental Mindoro, Camarines Sur, Camarines Norte, Albay, Sorsogon and Catanduanes.

HIGHLIGHT:

According to *NDRRMC*, flooding events occurred in MIMAROPA, Region V, Region VIII, Region IX, and Region X during last week. As of 26 Dec at 1100 HRS UTC+7, *NDRRMC* reported that the flooding has resulted in 4 death, 9 missing persons, 23.6K families (98.7K persons) affected, and 56.6K people displaced to 216 evacuation centres. Meanwhile in Indonesia, according to the *BNPB*, floodings, landslides, tornadoes and storm-related events occurred in 11 provinces since 19 Dec. *BNPB* reported that the impact of disasters has resulted in 5 death, 1 missing person, and 24.1K families (95.6K persons) affected. The local disaster management authorities have carried out necessary actions to address the situation.

HYDRO-METEO-CLIMATOLOGICAL:



For the past week, data from the ASEAN Specialised Meteorological Centre (*ASMC*) showed high 7-day average rainfall spreading across most of Indonesia; most of Malaysia; Java, northern parts of Kalimantan, southern Sulawesi, and Papua in Indonesia; and Palawan, Mindanao, and eastern Visayas of the Philippines. As of reporting, Tropical Cyclone DARIAN, is located outside of ASEAN Region, approximately 2,230 km Southwest of Enggano, Bengkulu, Indonesia. It is forecasted to move to the east and to turn southwestward in 24 hours (*JTWC*).

GEOPHYSICAL:

Six (6) significant earthquakes (M>5.0) were recorded in Indonesia's *Badan Meteorologi, Klimatologi, dan Geofisika (BMKG)* and the Philippine Institute of Volcanology and Seismology (*PHIVOLCS*). Mount Semeru (alert level III) in Indonesia, and Taal (alert level 1), Kanlaon (alert level 1), Bulusan (alert level 1), and Mayon Volcano (alert level 2) in the Philippines reported recent volcanic activity according to the Pusat Vulkanologi dan Mitigasi Bencana Geologi (*PVMBG*) and *PHIVOLCS*.

OUTLOOK:

According to the ASEAN Specialised Meteorological Centre (*ASMC*), for the coming week, wetter conditions are expected over the southern Maritime Continent and over parts of the northeastern Maritime Continent. Drier conditions are predicted over the western Maritime Continent and the equatorial region. Cooler than usual temperature is predicted over much of central and eastern Mainland Southeast Asia, over much of the western, and southern Maritime Continent. Warmer than usual temperature is predicted over parts of the eastern equatorial region. The Northeast Monsoon has started in parts of the ASEAN region since the early of December, which typically becomes fully established by the end of December. With the monsoon rain band located close to the Equator, an increase in shower activities over the equatorial ASEAN region can be expected. La Niña conditions are predicted to weaken in early 2023. La Niña event tends to bring wetter conditions to much of the ASEAN region