

MONDAY  
19 DEC 2022  
1330 HRS UTC +7

# FLOODING AND LANDSLIDES IN PENINSULAR MALAYSIA

## FLASH UPDATE #1

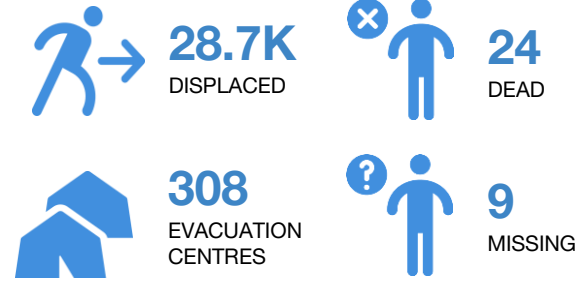


Landslide in Batang Kali, Hulu Selangor (Selangor State) on 16 Dec 2022  
Source: APM Malaysia posted by Bernama



Evacuation Operation in Setiu District (Terengganu State)  
Source: APM Setiu posted by NADMA Malaysia

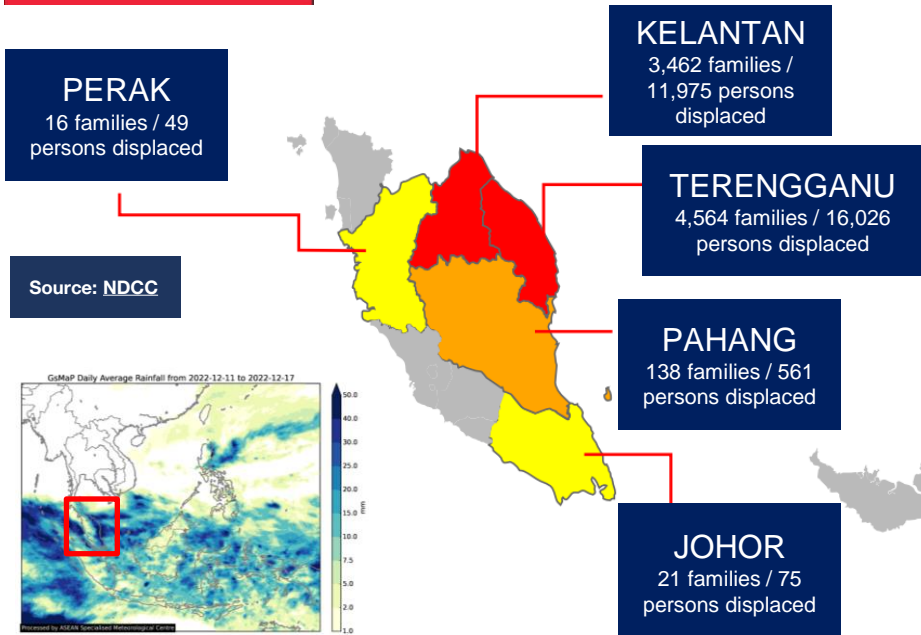
### KEY FIGURES



Disclosure(s): Estimations are based on data reported/confirmed by National Disaster Management Organisations of the respective ASEAN Member State (Agensi Pengurusan Bencana Negara (NADMA) and other verified sources

### Landslide Location

### Number of affected people by flooding since 18 December 2022, as of 19 December at 1100 HRS UTC+7



● **OVERVIEW:** Northeast Monsoon have caused a series of floods and landslides in several states of Malaysia. On 18 Dec 2022 at 0900 HRS UTC+7, *Jabatan Meteorologi Malaysia (MET Malaysia)* issued **Danger** warning (expected to result to continuous heavy rain with rainfall exceeding 240 mm/day) in Kelantan, Terengganu, and Pahang (Jerantut and Kuantan), and **Severe** warning (continuous heavy rain) in Perlis, Kedah (Langkawi, Kubang Pasu, Kota Setar, Pokok Sena, Padang Terap, Yan, Pendang, Sik and Baling), Perak (Hulu Perak), and Pahang (Cameron Highlands, Lipis, Maran, Pekan and Rompin) until Wednesday, 21 Dec 2022. Landslide was also reported by *Agensi Pengurusan Bencana (NADMA)* Malaysia on 16 Dec 2022 in Batang Kali, Hulu Selangor, Selangor State.

● **IMPACTS:** as of 19 Dec 2022, at 0900 HRS UTC+7, a total of 81 flooded areas and 15 landslides, and 5 roads and 3 bridges in Malaysia were reported by *Jabatan Kerja Raya (JKR)*.

#### Flooding

- As of 19 Dec 2022, 1100 HRS UTC+7, *NADMA* Malaysia has reported **20 districts** in **5 states** affected by floods with a total of **8,201 families/28,686 persons** displaced in 308 evacuation centres including:
  - Johor: **21 families/75 persons displaced** in 3 evacuation centres over Segamat;
  - Kelantan: **3,462 families/11,975 persons displaced** in 93 evacuation centres over Bachok, Jeli, Kota Bharu, Kuala Krai, Machang, Pasir Mas, Pasir Puteh, Tanah Merah, and Tumpat;
  - Pahang: **138 families/561 persons displaced** in 5 evacuation centres over Kuantan and Raub;
  - Perak: **16 families/49 persons displaced** in 2 evacuation centres over Hilir Perak;
  - Terengganu: **4,564 families/16,026 persons displaced** in 205 evacuation centres over Besut, Dungun, Hulu Terengganu, Kemaman, Kuala Terengganu, Marang, and Setiu.
- According to the ASEAN Disaster Information Network (*ADINet*), recent flooding event in Malaysia with comparable severity was in 17 Dec 2021, which is resulted to more than 60K displaced persons in Kelantan, Terengganu, Pahang, Melaka, Negeri Sembilan, Kuala Lumpur, Selangor, and Perak States.

#### Landslides

- As of 18 Dec 2022, a total of **94 people were affected** (at the campsite in Batang Kali, Hulu Selangor, Selangor State when the landslide struck on 16 Dec 2022), of which, **61 persons were rescued alive, 24 found dead, and 9 persons still missing** as reported by *Angkatan Pertahanan Awam Malaysia (APM)*.

● **RESPONSE:** Government of Malaysia continue to conduct Search and Rescue, and Evacuation Operation for the disaster events in Peninsular Malaysia. *APM* has activated *Pasukan Respon Bencana Sokongan (PARAS)* to respond to the disaster events caused by the Northeast Monsoon in Malaysia.

● **FORECAST:** *Jabatan Pengairan dan Saliran (JPS)* has released a **Flood** warning for Johor State, particularly for Mersing District (Sg. Mersing) starting from 19 Dec 2022 at 1100 HRS UTC+7, and Johor Bahru District (Sg. Johor, Sg. Tiram) starting from 21 Dec 2022 at 2000 HRS UTC+7.

● The AHA Centre will continue to monitor for further developments and issue necessary updates.

#### DATA SOURCES

ASEAN Disaster Monitoring & Response System (DMRS), ASEAN Disaster Information Network (ADINet); Pacific Disaster Center (PDC Global); ASEAN Specialised Meteorological Centre (ASMC); Malaysia: NADMA, MET Malaysia, NDCC, JKR, APM, JPS;

Verified news media agencies

#### DISCLAIMER

The AHA Centre was established in November 2011 by the Association of Southeast Asian Nations (ASEAN) Member States to facilitate cooperation and coordination among the Member States, relevant agencies of the United Nations, and international organisations in disaster management and humanitarian assistance. The use of boundaries, geographic names, related information and potential considerations for response are for reference, not warranted to be error free or implying official endorsement from ASEAN Member States.

© 2022 AHA Centre. All rights reserved.

You are receiving this email because you are registered in our distribution list.

Our mailing address is:  
AHA Centre,  
GRAHA BNPB 13<sup>th</sup> Floor,  
Jl. Raya Pramuka Kav. 38,  
Jakarta 13120 Indonesia