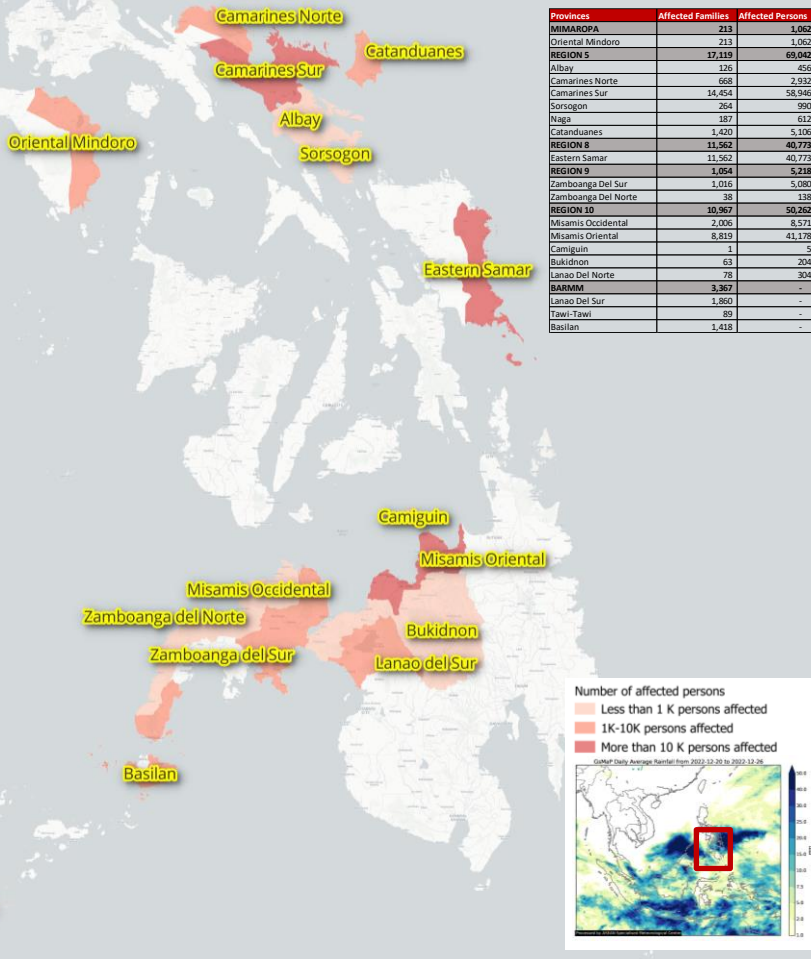


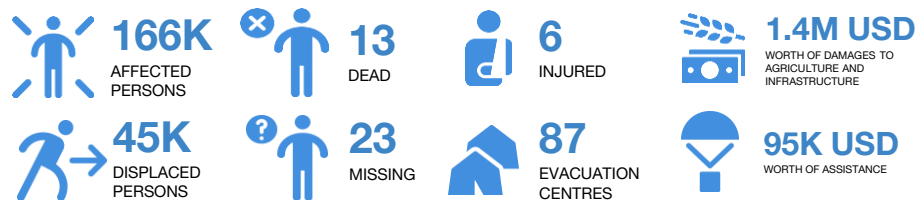
EFFECTS OF SHEAR LINE PHILIPPINES FLASH UPDATE #1



- CHRONOLOGY:** The Philippine Atmospheric, Geophysical and Astronomical Services Administration ([PAGASA](#)), has released several warning or advisories related to the Shear Line as follows:
 - 18 Dec: a weather advisory for Shear Line was issued and forecasted to bring at most moderate to heavy rains over Bicol Region and southern portion of Quezon.
 - 19 Dec: the Shear Line and trough of a LPA will bring at most moderate to heavy rains over Bicol Region, Romblon, Caraga, Davao Region, Northern Samar, Eastern Samar, and Samar.
 - 20 Dec: the combined effects Shear Line and through of a Low-Pressure Area (LPA) will bring at most moderate to heavy rains over Bicol Region, Eastern Visayas, Dinagat Islands, and Surigao Del Norte.
 - 21 Dec: the LPA east of Davao City is less likely to develop into a Tropical Depression within 48 hours. The Shear Line is no longer affecting any part of the Philippines.
 - 24 Dec: a weather advisory for Shear Line was reissued and forecasted to bring heavy to intense with at times torrential rains over Eastern Samar and moderate to heavy with at times intense rains over the rest of Eastern Visayas.
 - 25 Dec: at most moderate to heavy rains with at times intense rains over Southern Palawan, Eastern Visayas, Surigao Del Norte and Dinagat Islands.
 - 26 Dec: at most moderate to heavy rains with at times intense rains over Eastern Visayas, Bohol, Caraga, Northern Mindanao, and Davao Oriental.
- IMPACTS:** According to the National Disaster Risk Reduction and Management Council ([NDRRMC](#)) as of 0400 HRS UTC+7, 27 Dec 2022:
 - Related Incidents:** 247 flooded areas (264 subsided, 11 receding), 17 rain-induced landslides, and 7 related-events.
 - Affected population:**
 - 44,282 families (166,357 persons) have been affected from 385 Barangays, 66 Cities/Municipalities, 18 Provinces in Region V, VIII, IX, X, MIMAROPA, and BARMM;
 - 13,912 families (45,382 persons) displaced and 10,536 families (45,337 persons) of which are reportedly inside 87 evacuation centres;
 - 13 dead, 23 missing, and 6 injured.
 - Damages:**
 - 534 damaged houses (369 partially, 165 totally) have been reported in Regions VIII, IX, X, MIMAROPA, and BARMM with the cost of damage amounting to 203K USD;
 - 110 road sections and 4 bridge sections have been affected (15 roads and 3 bridges still not passable);
 - A total of 1.11M USD worth of damage to agriculture and 262.6K USD worth of damage to infrastructure.
 - Critical Lifelines:**
 - A total of 56 cities/municipalities experienced power outage, 32 of which have had power restored;
 - A total of 4 cities/municipalities experienced water supply interruption, 1 of which have had water supply restored.
- ANTICIPATED RISK:**
 - According to [PAGASA](#) at 1000 HRS UTC+7, in the next 24 hours, the Shear Line will bring moderate to heavy rains with at times intense rains over Eastern Visayas. Moderate to at times heavy rains is expected over Palawan, Bohol, Zamboanga Peninsula, Northern Mindanao, and Caraga. Flooding and rain-induced landslides are likely, especially in areas that are highly or very highly susceptible to these hazards with significant antecedent rainfall.
 - According to ASEAN Specialised Meteorological Centre ([ASMC](#)), for the coming week, wetter conditions are expected over the southern Maritime Continent and over parts of the northeastern Maritime Continent, including the Philippines.
- PREPAREDNESS AND RESPONSE:**
 - The Philippines [NDRRMC](#) Alert Status are still on **Blue Alert** on 27 Dec.
 - A total of 94.5k USD worth of assistance have been provided to the affected communities in the Region V, VIII, & IX.
 - [PAGASA](#) continue to release tropical cyclone warning/advisories for **Shear Line**.
 - Office of Civil Defence ([OCD](#)) Regional Office in the affected areas continue to coordinate with Department of Social Welfare and Development ([DSWD](#)) Regional Office, Dept. of Agriculture, Local Govt, and other relevant agencies to respond the impacts of Shear Lines as well as provide logistics needed by the affected communities.
 - Search, Rescue, and Retrieval (SRR) operations as well as impacts and damages assessments are ongoing.
- The AHA Centre will continue to monitor and issue necessary updates.

KEY FIGURES

Disclosure(s): Estimations are based on data reported/confirmed by National Disaster Management Organisations of the respective ASEAN Member State (National Disaster Risk Reduction and Management Council – Office of Civil Defence (NDRRMC-OCD) and other verified sources



DISCLAIMER