



ONE ASEAN  
ONE RESPONSE

# WEEKLY DISASTER UPDATE

Week 7  
13 – 19 Feb 2023

- ahacentre.org
- ahacentre
- @ahacentre
- @ahacentre

The AHA Centre, GRAHA BNPB 13th floor,  
Jl. Raya Pramuka Kav. 38, East Jakarta 13120 Indonesia

#### SOURCES

ASEAN Disaster Monitoring & Response System (DMRS);  
ASEAN Specialised Meteorological Centre (ASMC); Joint  
Typhoon Warning Centre (JTWC);

Indonesia: BNPB, BMKG, PVMBG;  
Thailand: DDPM;  
Philippines: NDRRMC, PAGASA, PHIVOLCS;

Various news agencies.

#### DISCLAIMER

The AHA Centre was established in November 2011 by the  
Association of Southeast Asian Nations (ASEAN) Member  
States to facilitate cooperation and coordination among  
Member States, relevant agencies of the United Nations  
and international organisations in disaster management and  
emergency response.

This update consists of significant natural disaster events that  
occurred in ASEAN Member States – Brunei  
Darussalam, Cambodia, Indonesia, Lao PDR, Malaysia,  
Myanmar, Philippines, Singapore, Thailand, and Viet Nam.  
The disasters recorded include Drought, Flood, Earthquake,  
Tsunami, Volcano, Wind, Landslide, and Storm.

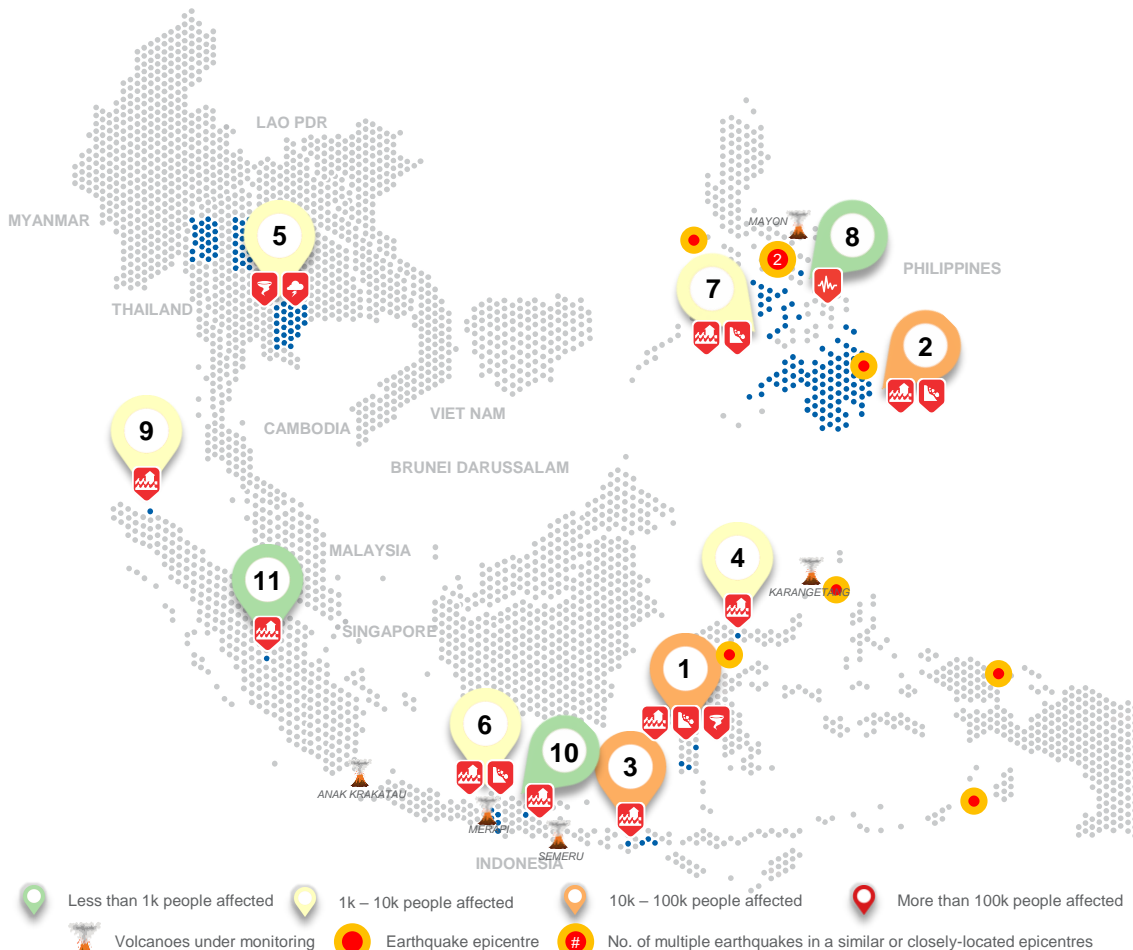
The use of boundaries, geographic names, related  
information, and potential considerations for response are  
for references, not warranted to be error-free or implying  
official endorsement from ASEAN Member States.

© 2023 AHA Centre.  
All rights reserved.

For inquiries, comments, and/or suggestions,  
you may reach us through [dma@ahacentre.org](mailto:dma@ahacentre.org)



You are receiving this email because you are  
registered in our distribution list.  
SCAN TO SUBSCRIBE



## REGIONAL TALLY



Note: Estimations are based on data reported/confirmed by National  
Disaster Management Organisations of each respective ASEAN  
Member State and other verified sources

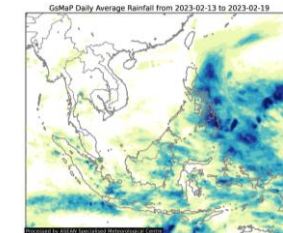
## REGIONAL SUMMARY:

For the seventh week of 2023, a total of 34 disasters (earthquake, floods, landslide, and wind-related) affected the region. Indonesia, the Philippines, and Thailand have reportedly been affected. Indonesia's *Badan Nasional Penanggulangan Bencana (BNPB)* reported flooding, landslide, and wind-related disaster events caused by moderate to heavy rainfall, overflowing of rivers, and strong winds in Aceh, Gorontalo, Central Java, East Java, West Nusa Tenggara, West Sumatra, and South Sulawesi. The Thailand's Department of Disaster Prevention and Mitigation (*DDPM*) reported storm and wind-related disaster events in Uttaradit, Chiang Rai, Chiang Mai, Kalasin, Amnat Charoen, Sisaket, Yasothon, Surin, Maha Sarakham, and Ubon Ratchathani. The Philippines' National Disaster Risk Reduction and Management Council (*NDRRMC*) has also reported flooding and landslide caused by the local pressure area and prolonged moderate to heavy rainfall in Region VI, X, XI, XII and CARAGA, and M6.0 Earthquake in Region V.

## HIGHLIGHT:

According to *NDRRMC*, floodings and landslides have affected 4 provinces in CARAGA on 18 Feb. As of 19 Feb, at 1700 HRS UTC+7, *NDRRMC* reported that the disasters have resulted in 13.1K families (48.6K persons) affected and 30.1K persons displaced to 162 evacuation centres. Meanwhile, in Thailand, storm and winds has affected 10 provinces on 14 Feb. According to *DDPM*, as of 17 Feb, at 0600 HRS UTC+7, a total of 340 houses reportedly damaged. Local disaster management authorities have carried out necessary actions to address the situation.

## HYDRO-METEO-CLIMATOLOGICAL:



For the past week, data from the ASEAN Specialised Meteorological Centre (*ASMC*) showed medium to high 7-day average rainfall spreading across Java, Sumatra, Kalimantan, Maluku, and Papua in Indonesia; and most of the Philippines. As of reporting, Tropical Disturbance *INVEST 99W* is located approximately at 220 km east northeast of Casiguran, Aurora, the Philippines (*PAGASA*). *INVEST 99W* is less likely to develop into a Tropical Depression (*PAGASA*). The potential for the development into a significant tropical cyclone within the next 24 hours is *medium*. (*JTWC*)

## GEOPHYSICAL:

Eight (8) significant earthquakes ( $M \geq 5.0$ ) were recorded in the region by *Indonesia's Badan Meteorologi, Klimatologi, dan Geofisika (BMKG)* and the Philippine Institute of Volcanology and Seismology (*PHIVOLCS*). Mount Semeru (alert level III), Karangetang (alert level III), Dukono (alert level II), and Kerinci (alert level II) in Indonesia, and Taal (alert level 1), Kanlaon (alert level 1), and Mayon Volcano (alert level 2) in the Philippines according to the *Pusat Vulkanologi dan Mitigasi Bencana Geologi (PVMBG)* and *PHIVOLCS*.

## OUTLOOK:

According to the ASEAN Specialised Meteorological Centre (*ASMC*), for the coming week, wetter conditions are expected over much of western and northeast Maritime Continent. Cooler conditions are expected over most of central and eastern Mainland Southeast Asia, and over parts of the western Maritime Continent. For the regional assessment of extremes, there is a moderate increase in chance in Northern Philippines and Sumatra, and small increase in chance in Malay Peninsula and East Kalimantan for a heavy rainfall event; and small increase in chance for extreme hot conditions to occur in the parts of central and northern Myanmar. La Niña conditions have been present, with signs of weakening. At the seasonal timescale, La Niña events tend to bring wetter conditions to much of the Maritime Continent.