



ONE ASEAN
ONE RESPONSE

WEEKLY DISASTER UPDATE

Week 12
20-26 March 2023

- ahacentre.org
- ahacentre
- @ahacentre
- @ahacentre

The AHA Centre, GRAHA BNPB 13th floor,
Jl. Raya Pramuka Kav. 38, East Jakarta 13120 Indonesia

SOURCES

ASEAN Disaster Monitoring & Response System (DMRS);
ASEAN Specialised Meteorological Centre (ASMC); Joint
Typhoon Warning Centre (JTWC);

Indonesia: BNPB, BMKG, PVMBG;
Malaysia: NADMA;
Philippines: NDRRMC, PAGASA, DSWD;
Thailand: DDPM;

Various news agencies.

DISCLAIMER

The AHA Centre was established in November 2011 by the
Association of Southeast Asian Nations (ASEAN) Member
States to facilitate cooperation and coordination among
Member States, relevant agencies of the United Nations
and international organisations in disaster management and
emergency response.

This update consists of significant natural disaster events
that occurred in ASEAN Member States – Brunei
Darussalam, Cambodia, Indonesia, Lao PDR, Malaysia,
Myanmar, Philippines, Singapore, Thailand, and Viet Nam.
The disasters recorded include Drought, Flood, Earthquake,
Tsunami, Volcano, Wind, Landslide, and Storm.

The use of boundaries, geographic names, related
information, and potential considerations for response are
for references, not warranted to be error-free or implying
official endorsement from ASEAN Member States.

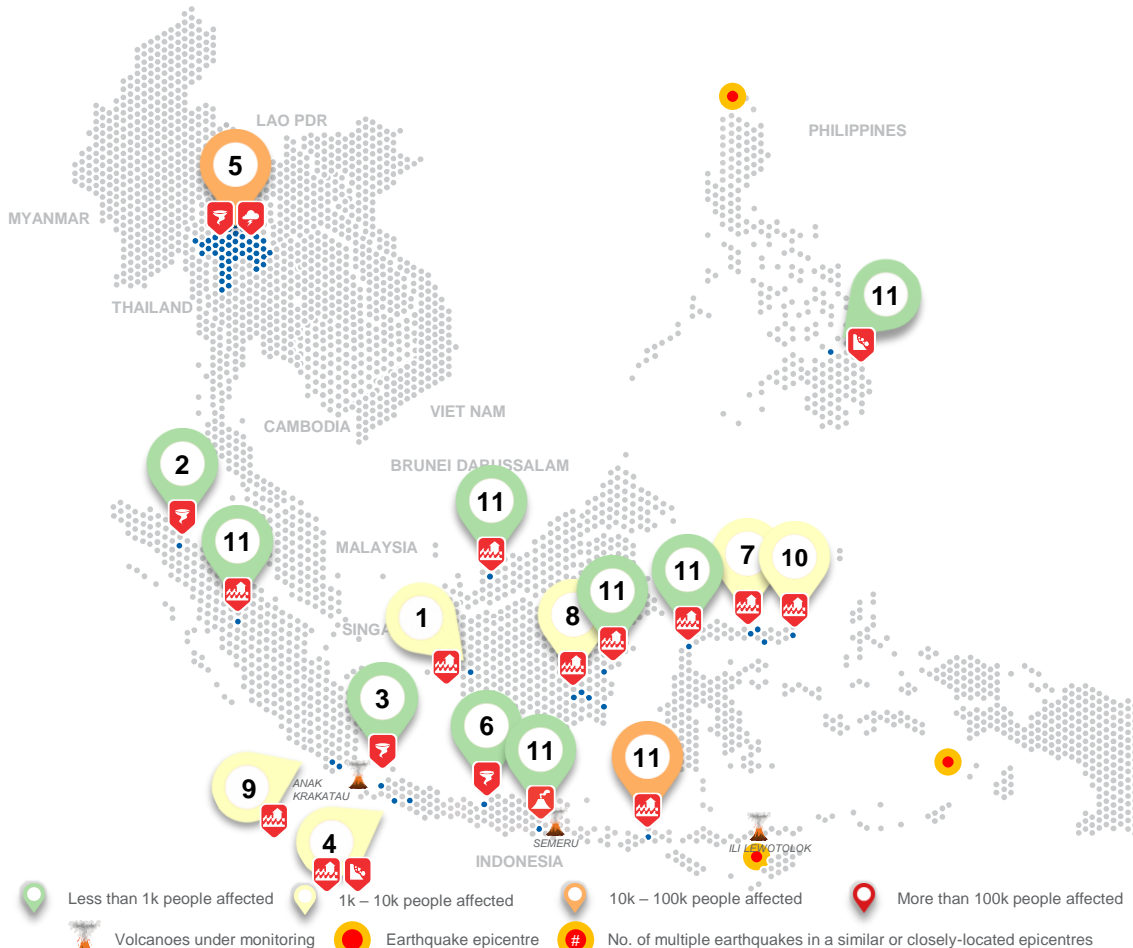
© 2023 AHA Centre.
All rights reserved.

For inquiries, comments, and/or suggestions,
you may reach us through dma@ahacentre.org



You are receiving this email because you are
registered in our distribution list.

SCAN TO SUBSCRIBE



REGIONAL TALLY



Note: Estimations are based on data reported/confirmed by National
Disaster Management Organisations of each respective ASEAN
Member State and other verified sources

- 01 Indonesia, Flooding in [Ketapang](#) (West Kalimantan)**
20 Mar 2023
- 02 Indonesia, Strong Wind in [Binjai City](#) (North Sumatra)**
20 Mar 2023
- 03 Indonesia, Strong Wind in [Serang](#) (Banten)**
20 Mar 2023
- 04 Indonesia, Flooding in [Cianjur](#); Flooding and Landslide in [Bandung](#) (West Java)**
20 Mar 2023
- 05 Thailand, Storms and Wind in [Chiang Rai](#), [Phrae](#), [Lampang](#), [Nan](#), [Chiang Mai](#), [Tak](#), and [Loei](#)**
21 Mar 2023
- 06 Indonesia, Tornado in [Kendal](#) (Central Java)**
21 Mar 2023
- 07 Indonesia, Flooding in [North Gorontalo](#) (2); [Bone Bolango](#), [Gorontalo](#) (Gorontalo)**
21, 26, 26 Mar 2023
- 08 Indonesia, Flooding in [Kotabaru City](#), [Hulu Sungai Tengah](#), [Tapin](#), and [Balangan](#) (South Kalimantan)**
21, 23, 26, 26 Mar 2023
- 09 Indonesia, Flooding in [Pesawaran](#) and [Pringsewu](#) (Lampung)**
22 Mar 2023
- 10 Indonesia, Flooding in [Bolaang Mongandow Timur](#) (North Sulawesi)**
22 Mar 2023
- 11 OTHER EVENTS – Indonesia:** Riau ([22-Mar](#)), West Nusa Tenggara ([22-Mar](#)), Semeru ([24-Mar](#)), East Kalimantan ([24-Mar](#)), Central Sulawesi ([26-Mar](#)); **Philippines:** Gingoog City ([26-Mar](#)); **Malaysia:** Sibiu ([26-Mar](#))

REGIONAL SUMMARY:

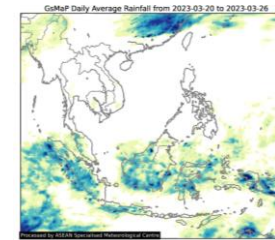
For the twelfth week of 2023, a total of 26 disasters (floods, landslides, storms, tornado, and lava flow) affected the region. Indonesia, Malaysia, and the Philippines have reportedly been affected. *Badan Nasional Penanggulangan Bencana (BNPB)* reported floods caused by moderate to heavy rainfall, and overflowing of rivers in North Sumatra and Riau, West and Central Java, Banten, Gorontalo, North Sulawesi, and West, South, and East Kalimantan and cold lava flow from Semeru. Thailand's Department of Disaster Prevention and Mitigation ([DDPM](#)) reported that windstorms affected multiple provinces in the Northwest portion of the country. The Philippines' National Disaster Risk Reduction and Management Council ([NDRRMC](#)) also reported floods in Misamis Oriental of Region X. Lastly, *Agensi Pengurusan Bencana (NADMA)* Malaysia reported flooding and in Sibiu in Sarawak State.

HIGHLIGHT:

According to [DDPM](#), the storms caused by the low pressure in the upper parts of Thailand from 18-21 March 2023 resulted in 4.1K families (14,176 persons) and 4.1K houses affected. The provinces of Chiang Rai, Phrae, Lampang, Nan, Chiang Mai, Tak, and Loei. [DDPM](#) has carried out necessary actions such as rapid assessment, continuous monitoring, and evacuation to address the situation.

On another note, according to [BNPB](#), heavy rainfall resulted in flooding in Dompus Regency in West Nusa Tenggara and affected 2K families (10.1K persons) and 2K houses. Local authorities have carried out rapid assessment and evacuation to address the situation.

HYDRO-METEO-CLIMATOLOGICAL:



For the past week, data from the ASEAN Specialised Meteorological Centre ([ASMC](#)) showed medium to high 7-day average rainfall spreading across Indonesia and Eastern Malaysia. Generally low rainfall was observed in Mainland Southeast Asia and the Philippines. According to the Joint Typhoon Warning Centre ([JTWC](#)), currently, there are no active tropical cyclone advisories for the region.

GEOPHYSICAL:

Three (3) significant earthquakes ($M \geq 5.0$) were recorded by Indonesia's Badan Meteorologi, Klimatologi, dan Geofisika ([BMKG](#)) and Philippine Institute of Volcanology and Seismology ([PHIVOLCS](#)). Mount Semeru (alert level III), Anak Krakatau (alert level III), and Ili Lewotolok (alert level II) in Indonesia, and Taal (alert level 1), Mayon Volcano (alert level 1), and Kanlaon (alert level 1) in the Philippines reported recent volcanic activity according to Pusat Vulkanologi dan Mitigasi Bencana Geologi ([PVMBG](#)) and [PHIVOLCS](#).

OUTLOOK:

According to the ASEAN Specialised Meteorological Centre ([ASMC](#)), for the coming week, drier conditions are expected over much of the northern ASEAN region extending further southwards to the Malay Peninsula. Warmer than usual temperatures are expected over central and eastern Mainland southeast Asia and northern Philippines in line with the predicted drier conditions. For the regional assessment of extremes, there is a low chance for a very heavy rainfall event to occur; small increase in chance for extreme hot conditions in parts of central and northern Mainland Southeast Asia, and northern Philippines. La Niña conditions continue to weaken, which at the seasonal timescale bring wetter conditions to much of the Maritime Continent during this time of year.